



BIM Insights Sessions | 2-11-2017

BIM APPS FOR MANUFACTURERS

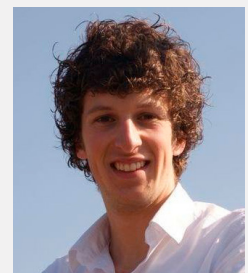
In this paper you will learn:

- About MEPcontent
- About Stabiplan
- What are apps for manufacturers?
- What is the relation between content and apps?
- What MEP apps are available?

Stefan van Eerde
Senior Product Marketer



Maarten Sonneveld
International Sales
Engineer



MEPcontent

-  Uniform Revit models
-  30,000+ MEP engineers
-  290+ manufacturers
-  500,000+ articles
-  Global reach
-  EMCS content standard

ABOUT MEPCONTENT

MEPcontent is a platform where we offer uniform Revit models to engineers globally. It is the place to be for free content for Revit and AutoCAD as well as IFC files. Together with leading manufacturers globally, we strive for the widest possible range of MEP articles on our website.

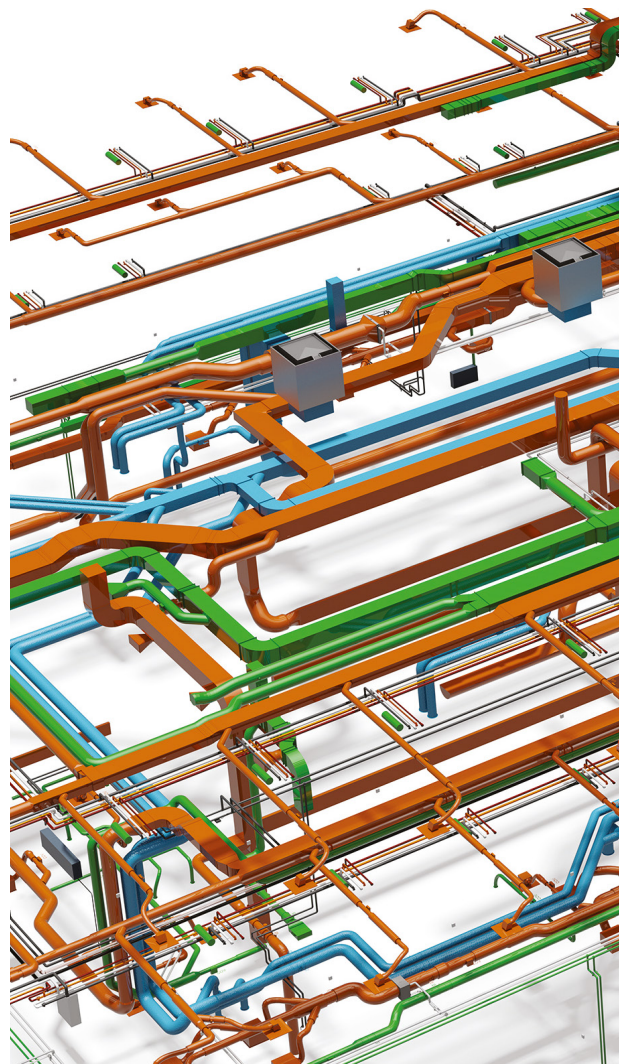
The quality of the content is of great importance not only for the manufacturer, but definitely for the engineer to make sure he will have access to small sized, workable content which is easy to replicate and easy to use in their projects.

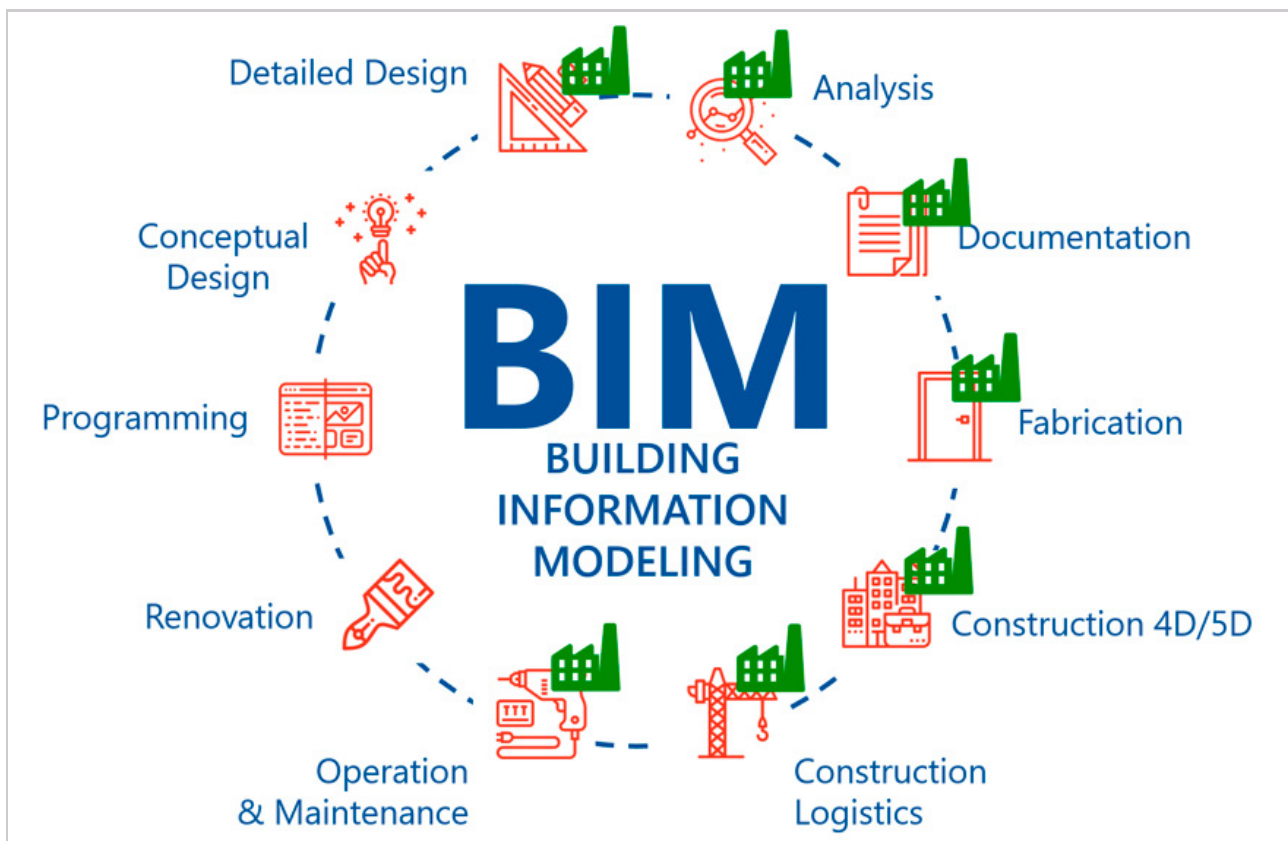




STABIPLAN

MEPcontent is part of Stabiplan, a company that has been active for already 27 years in the MEP industry. Stabiplan started by developing a software plug-in for Autocad as a tool that would serve engineers design building installations. Over the years Revit came along and now Stabiplan is offering solutions for both Autocad and Revit. Stabicad is used by more than 10.000 users in Europe amongst which we find large installation or consulting engineering companies.





WHAT IS THE MANUFACTURER'S PLACE IN BIM?

In close cooperation with leading manufacturers, MEPcontent offers free BIM files and apps to MEP engineers worldwide.

In BIM, information is in the middle. Already from the phase of detailed design, it is very relevant for engineers to have data available from the manufacturers they want to use in their projects. This information will be used in many later phases of the BIM process.

Reliable, qualitative data is essential in BIM projects. Since manufactures are the main source for product data, it is very important that the information they provide is correct and up to date.

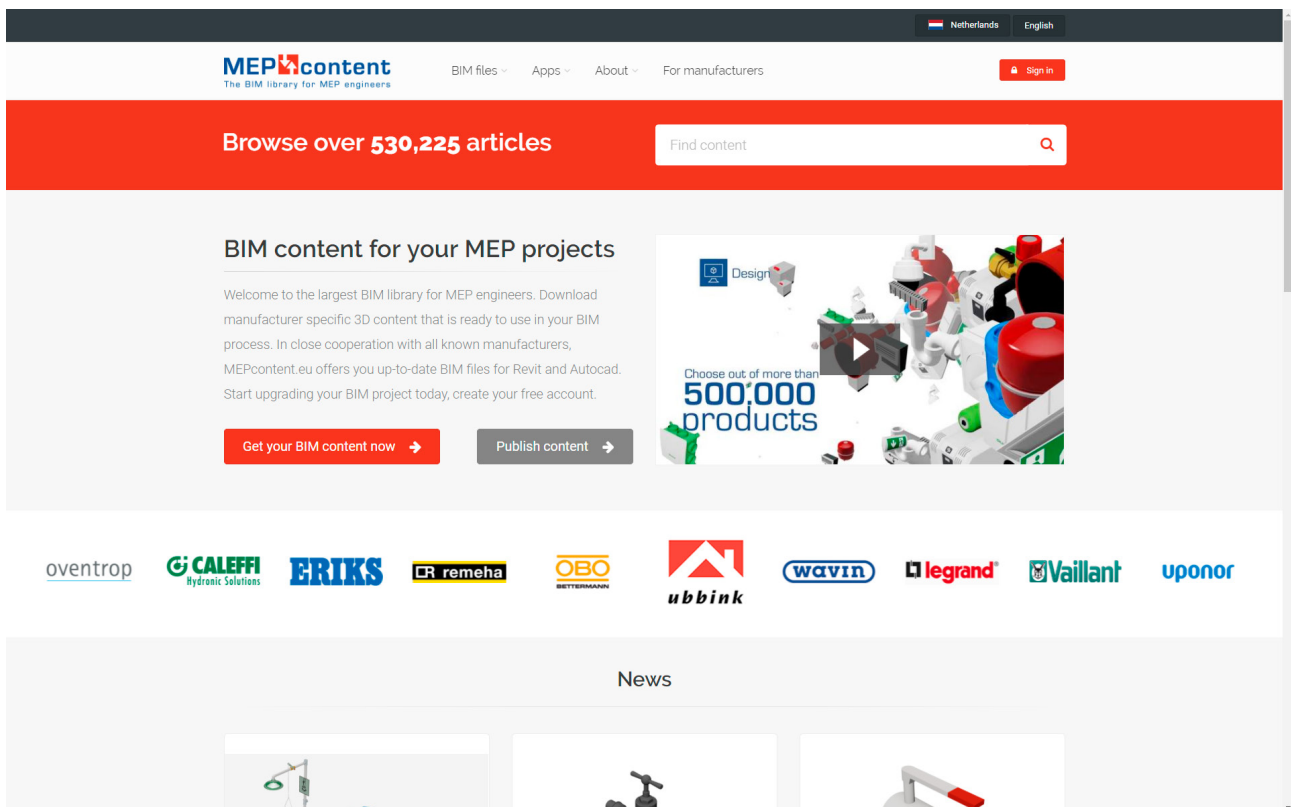
As a manufacturer you can:

JOIN the largest community of MEP engineers and manufacturers worldwide: MEPcontent.com. Thousands of engineers use our BIM platform on a daily basis.

SELECT your products that are available to MEP engineers. Gather and bundle the data you want to share with Revit users, such as technical and trade information.

DELIVER your product information to our content factory using our web services. The factory will transform your data into a user friendly app for Revit.

PUBLISH whether you have mechanical or electrical products: we can product a Revit app that matches your product range. Publish your app in our store to reach a large group of MEP engineers.

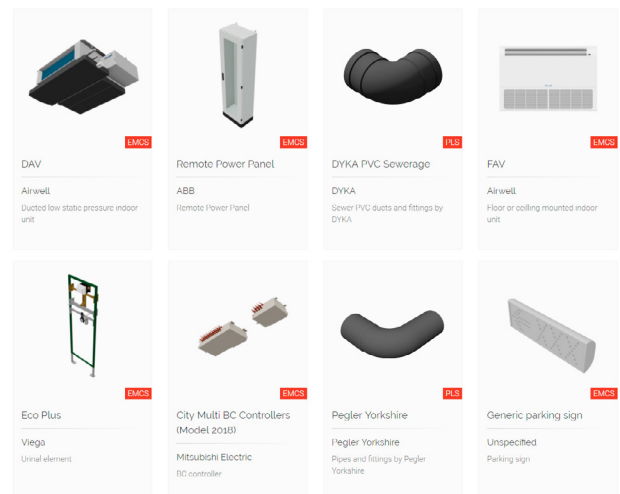


MEPCONTENT.COM

For those of you who are not that familiar with MEPcontent, this is an overview of the MEPcontent site.

Our platform MEPcontent.com offers BIM files from all major manufacturers in MEP engineering from all around the world. The content can be used in both Revit and Cad software directly and can be downloaded for free once you have created a free account on our website.

On our product overview page you can filter your view based on several content types. Here manufacturers can feature their BIM files and let engineers find the most appropriate data that they can use in their projects.



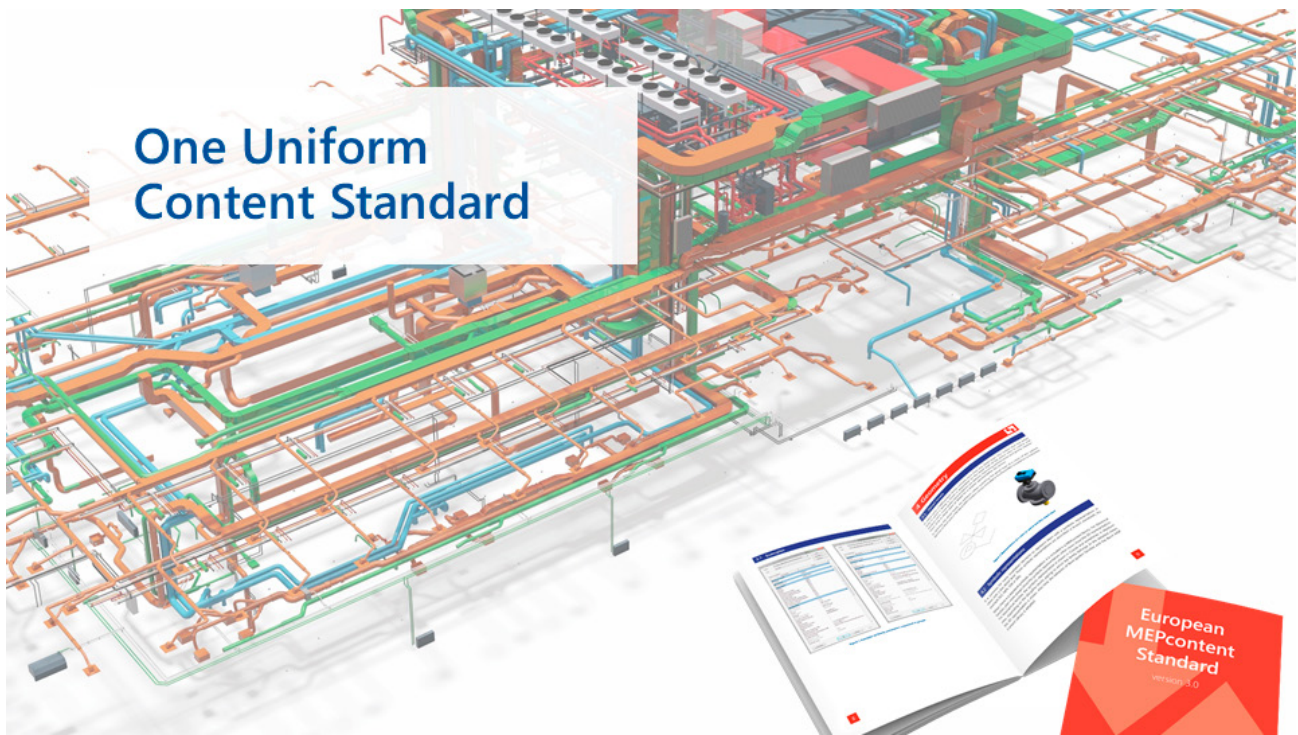


MORE THAN 290 MANUFACTURERS

The content we offer on the platform is provided by over 290 manufacturers and this number is constantly growing, a couple of months ago we had 260 manufacturers.

To make sure that all the content provided is relevant for the engineers, we tightly work together with the manufacturers to provide BIM files that represent the actual articles available at the wholesaler or manufacturer.

The content provided by manufacturers is adjusted and enriched by the MEPcontent content factory to give the engineers an optimal user experience and to make sure it does comply with high quality standards (such as EMCS).



THE EUROPEAN MEPCONTENT STANDARD

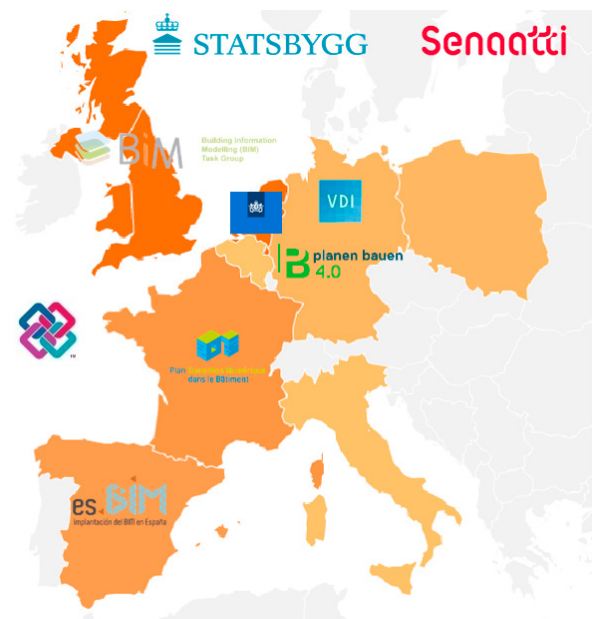
The European MEPcontent Standard (EMCS) has been prepared by Stabiplan to provide MEP engineers throughout Europe with a clear understanding of the need for high quality and uniform content. I.e. graphical article information.

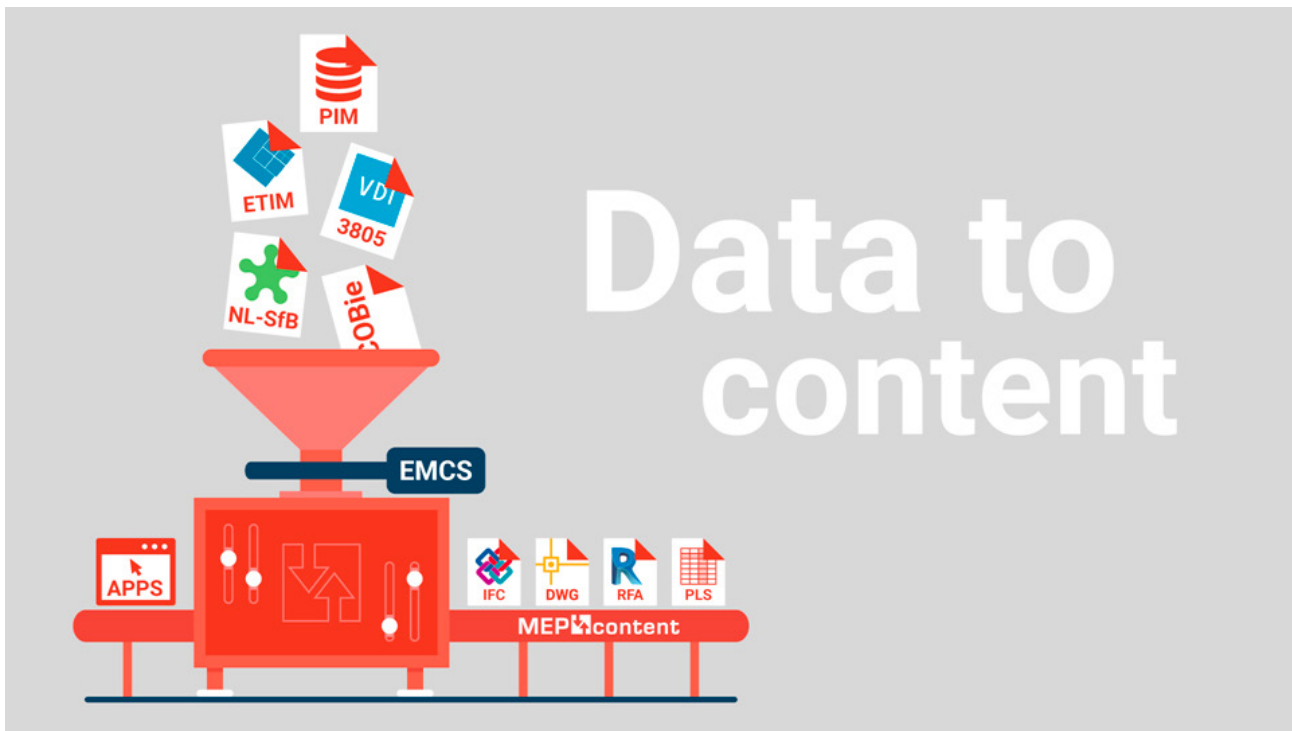
The document also represents the vision of 290+ manufacturers for the future. They already adapted the EMCS as their standard. We want to share our knowledge on MEP and content for MEP because we know that MEP is a dedicated business that deserves its own standard. Ideally, a standard that is globally accepted or at least not country specific but applicable in larger regions, such as Europe.

And the EMCS is aligned with national standards.

Because of that, the content is widely accepted by engineers who trust content according to EMCS. The content is not only downloaded throughout Europe, but also globally.

The EMCS also helps manufacturers by providing a clear outline of what fields need to be filled in in order for the engineers to find the correct data they require.

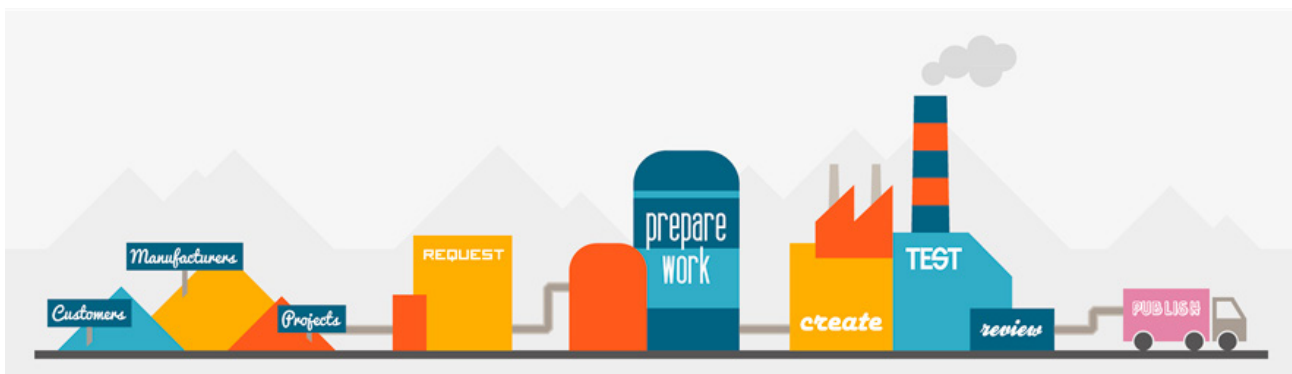




HOW WE CREATE DATA FROM CONTENT

We start with the raw materials provided by manufacturers such as PIM, ETIM or COBie data. We collect all that data and we put it through the EMCS filter in the content factory, which provides output in file types such as IFC, DWG, RFA and PLS.

Additionally, another type of output takes the form of apps for Revit.





Lightning fast MEP design

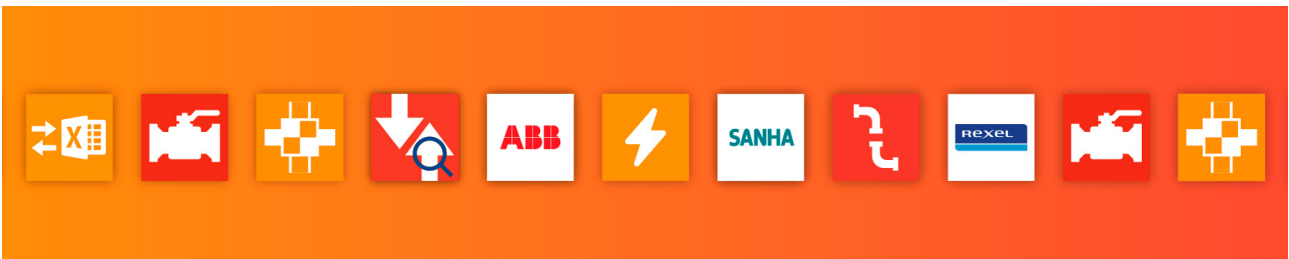
A BRAND NEW WAY TO EXPOSE YOUR PRODUCTS

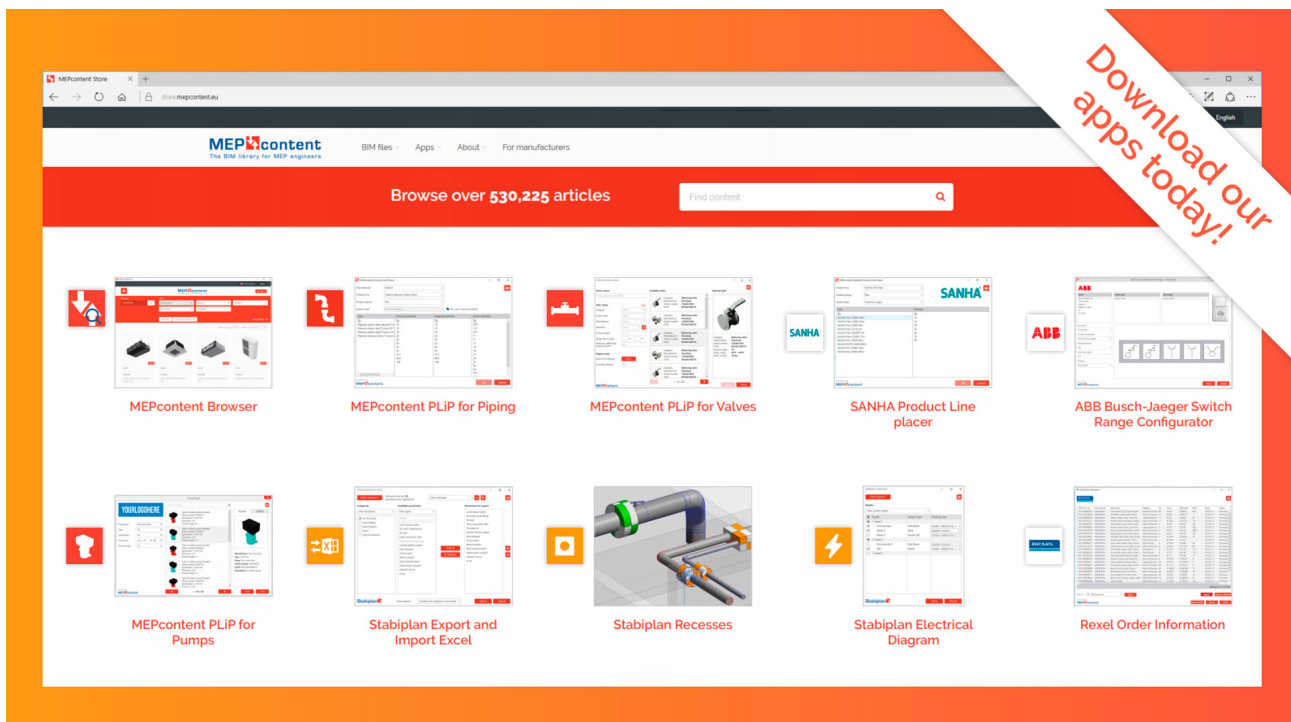
Apart from the various different file types such as Revit families, Autocad DWGs or IFC files, there is also another way to make your BIM files available to engineers. That is why we created the Revit apps!

The apps have several different advantages both for manufacturers and for engineers. In apps, you can preset settings, therefore it is for example possible to work with different languages, localizations or product ranges per country.

Reach MEP engineers at the moment of design and purchase decision with your own customized app for Revit! With it:

- Customers can easily draw with localized data
- BIM engineers can draw piping systems much faster than using Revit Family Packs
- BIM engineers always draw with actual cloud based product data that is up to date
- Get insights in user statistics and user behaviour

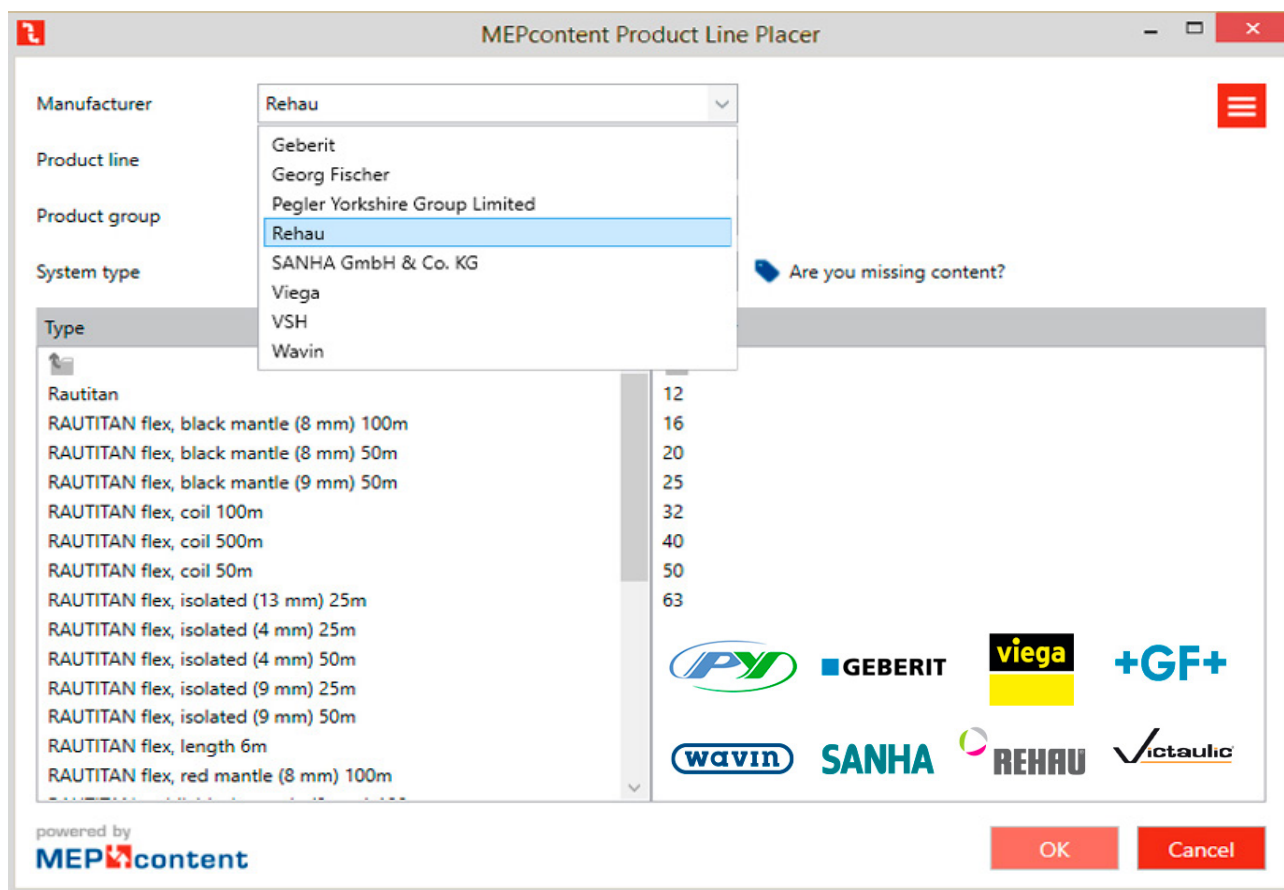




DOWNLOAD THE APPS TODAY

This is an overview of the current Revit apps which are available or which are in development. We make a clear distinction between content apps - apps that can be used to design manufacturer specific systems - and apps that are providing extra functionalities.

Those with the orange icon are functionality apps (our so called Stabiplan apps). Those with the red icon are the MEPcontent apps. Those with the manufacturer logo attached to it are manufacturer specific apps like the SANHA Product Line Placer for piping systems or the ABB Busch-Jaeger Switch Range Configurator to configure and place switch ranges in Revit.



MEPCONTENT PRODUCT LINE PLACER FOR PIPING

WHAT IS IT?

A plugin for Revit to draw piping systems with manufacturer specific BIM content from up to 8 MEP manufacturers.

HOW DOES IT WORK?

Download the app/plugin from store.mepcontent.com. Install it. Start Revit. Select the MEPcontent ribbon. Click on the plugin. Login with your MEPcontent credentials. Select the manufacturer you like and start drawing piping systems with the product lines relevant to you. Want to access more content? Click on the upgrade button in the app. You will be redirected to the app store. The full version of the app is added to your shopping cart and you can select the payment provider you want. Pay and subscribe to the full app to make sure you will receive updates and additional content to work with.

WHAT MAKES IT DIFFERENT FROM PLAIN REVIT?

No more double checking on custom fittings, bends and other materials. The objects used in the app represent the

real products from manufacturers. Just draw the piping system, click and draw (autorouting) and the materials are automatically added to your bill of materials. And you will save a lot of time and stress while having the flexibility to work with piping systems from multiple manufacturers.

WHY DOWNLOAD/USE/SUBSCRIBE?

Can save you a lot of time (autorouting and nodesolver functionalities) and costs (no need to buy expensive advanced software). Flexible pricing structure (subscription based so you do not miss out on new content and essential updates). Try out for free and upgrade to gain access to more manufacturers and more product lines to choose from. Work with the relevant product lines from within the app without having to download additional content from BIM libraries, projects or other systems.



MEPcontent SANHA Product Line Placer

Product line:

Product group:

System type:

SANHA

| Type | Diameter |
|---------------------------|----------|
| MultiFit-Flex 23000 100m | 16 |
| MultiFit-Flex 23000 200m | 20 |
| MultiFit-Flex 23000 50m | 26 |
| MultiFit-Flex 23100 5m | 32 |
| MultiFit-Flex 23200B 75m | 40 |
| MultiFit-Flex 23200R 75m | 50 |
| MultiFit-Flex 23300 50m | 63 |
| MultiFit-PE-RT 23500 400m | |
| MultiFit-Pex 23400 100m | |
| MultiFit-Pex 23400 200m | |

powered by **MEPcontent**

MEPCONTENT SANHA PRODUCT LINE PLACER

WHAT IS IT?

A free plugin for Revit to draw piping systems with manufacturer specific BIM content from the MEP manufacturer SANHA.

HOW DOES IT WORK?

Download the app/plugin from store.mepcontent.com.
 Install it.
 Start Revit.
 Select the MEPcontent ribbon.
 Click on the plugin.
 Login with your MEPcontent credentials.
 Select the SANHA product lines you like and start drawing piping systems.

WHAT MAKES IT DIFFERENT FROM PLAIN REVIT?

No more double checking on custom fittings, bends and other materials. The objects used in the app represent the real SANHA products. Just draw the piping system, click and draw (autorouting) and the materials are automatically added to your bill of materials. And you will save a lot of time and stress while working with the app because it works very intuitive and fast.

WHY DOWNLOAD/USE/SUBSCRIBE?

Can save you a lot of time (autorouting and nodesolver functionalities) and costs (no need to buy expensive advanced software). And it is for free! Work with the relevant product lines from within the app without having to download additional content from BIM libraries, projects or other systems.

SANHA



| Series | Frame type | Insert type |
|---------------------------|--------------|--------------|
| Busch-Balance SI | Alpine white | Alpine white |
| Busch-Duro 2000 SI | Full frame | |
| Busch-Duro 2000 SI Linear | | |
| Future linear | | |
| Perilex | | |
| Reflex SI | | |
| Reflex SI Linear | | |

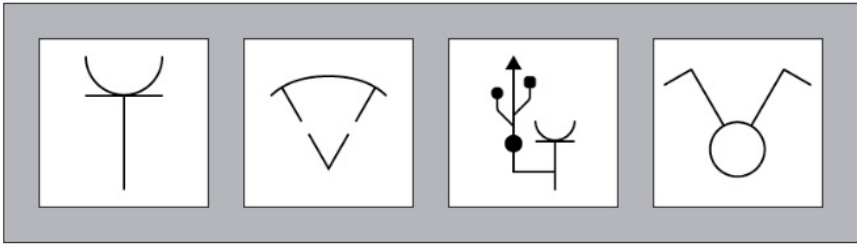
Orientation
Horizontal

Number of elements
4

Power (VA)
200

Mounting height
1050

Hosting
Face based



powered by
MEPcontent

Place Cancel

MEPCONTENT ABB BUSCH-JAEGER SWITCH RANGE CONFIGURATOR

WHAT IS IT?

A free plugin for Revit to generate and configure switch ranges based on the ABB Busch-Jaeger assortment.

HOW DOES IT WORK?

Download the app/plugin from store.mepcontent.com. Install it. Start Revit. Select the MEPcontent ribbon. Click on the plugin. Login with your MEPcontent credentials. Select the ABB Busch-Jaeger products you work with, configure the frame you like with the relevant electrical objects you need and place them into your Revit model.

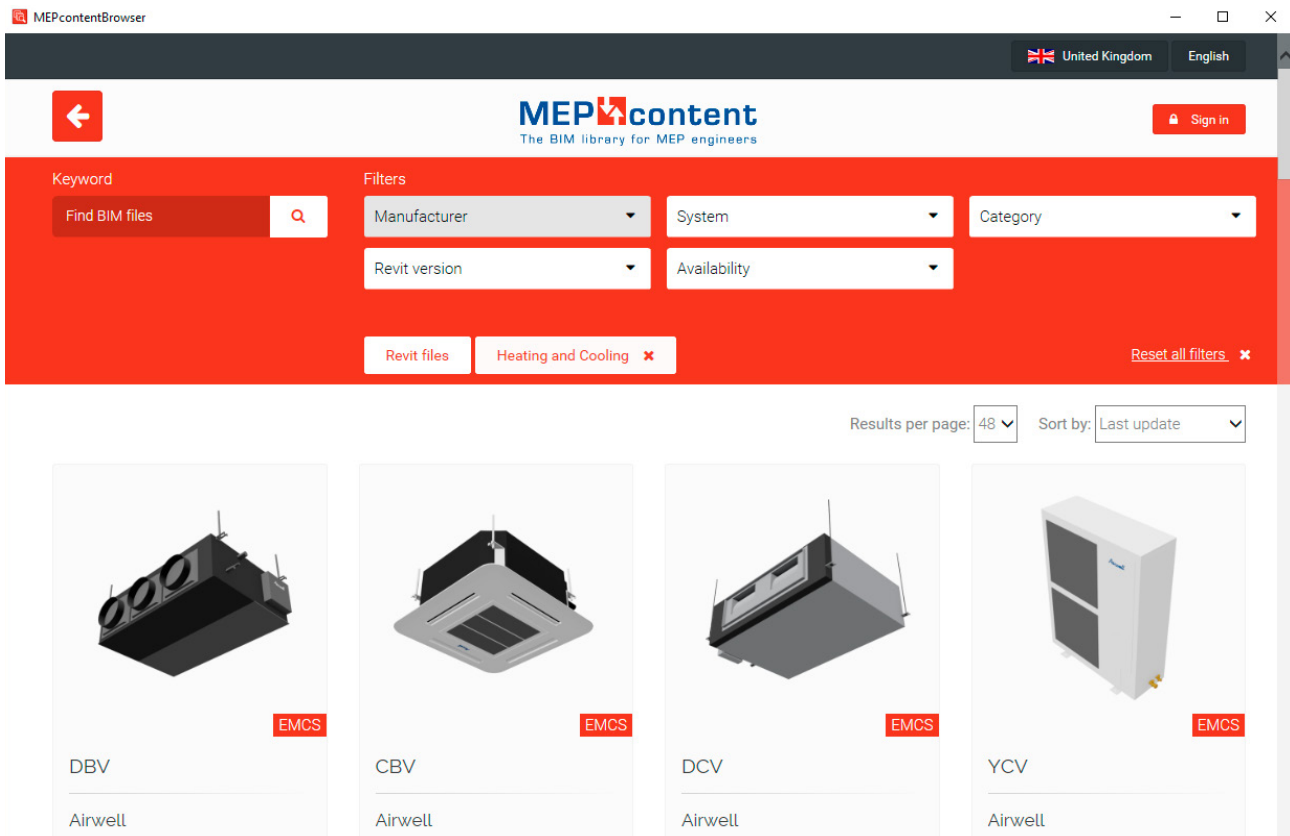
WHAT MAKES IT DIFFERENT FROM PLAIN REVIT?

You simply can't configure switch ranges with plain Revit. Additionally, the associated symbols are allocated. It is an extra functionality that helps you work faster and more efficient to complete your electrical projects in Revit.

WHY DOWNLOAD/USE/SUBSCRIBE?

Can help you generate and configure switch ranges in no time and place them into your Revit project. The app can be downloaded and used for free and objects used are automatically added to your electrical schedule





MEPCONTENT BROWSER

WHAT IS IT?

A free plugin for AutoCAD and Revit to browse and find relevant 3D MEP content to place in your BIM project.

HOW DOES IT WORK?

Download the app/plugin from store.mepcontent.com.

Install it.

Start Revit.

Select the MEPcontent ribbon.

Click on the plugin.

Login with your MEPcontent credentials.

Just like a web browser, you can select and place the content you are looking for, directly from Revit or AutoCAD without leaving it (both generic content and manufacturer specific content available).

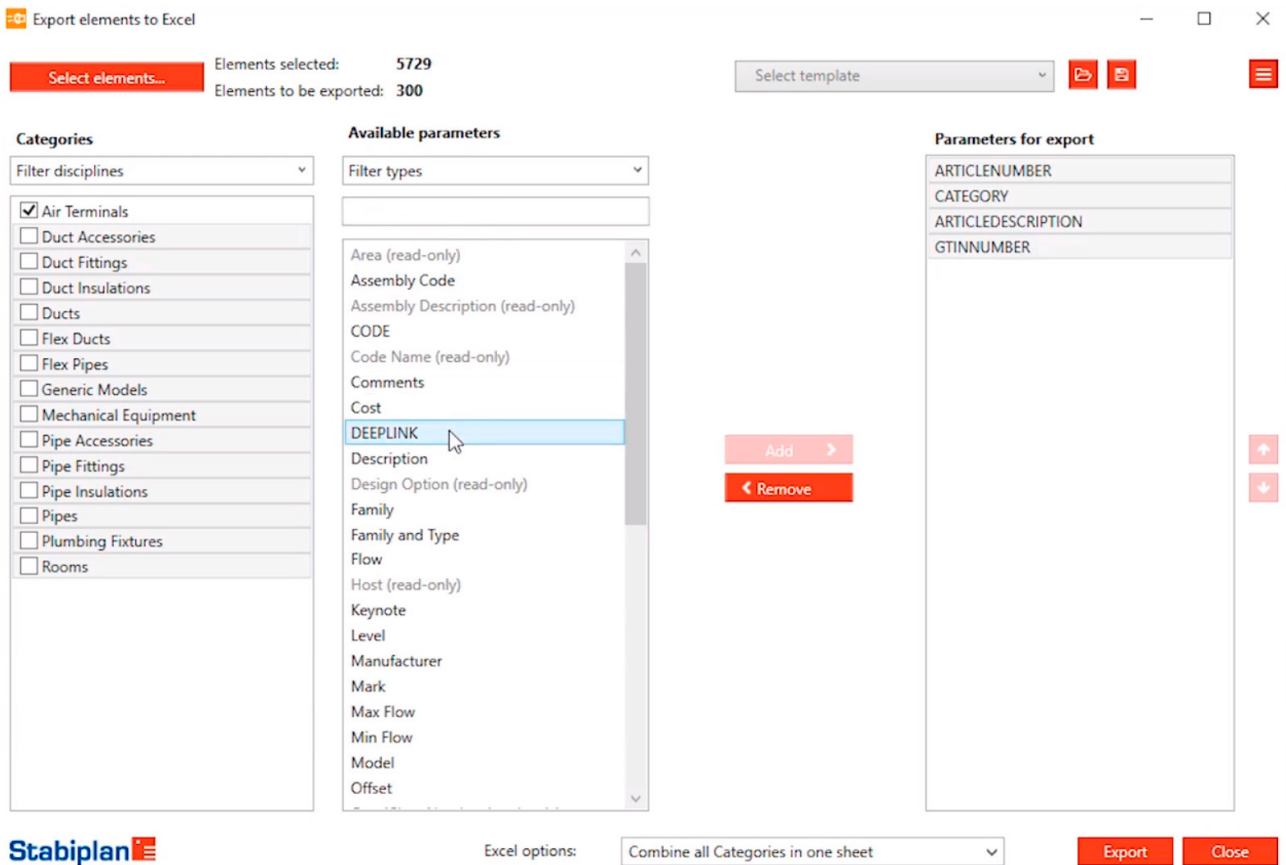
WHAT MAKES IT DIFFERENT FROM PLAIN REVIT?

Plain Revit does not offer the vast range of content available on MEPcontent which you can select and download directly into your project. It is a great addition to plain Revit.

WHY DOWNLOAD/USE/SUBSCRIBE?

Get access to relevant BIM content from the MEPcontent platform without having to leave AutoCAD or Revit. Easy to do and with great parametric details without making your project too heavy (file sizes are low) to work properly in it.





STABIPLAN EXPORT AND IMPORT EXCEL

WHAT IS IT?

A paid plugin for Revit to export data from Revit to excel in order to adjust it easily. From excel you can import it back into your Revit project without any hassle. You can make the selection of data you like (the whole project or just a section of it, you decide). It allows you to share data with partners who do not use Revit or who work outside your firm.

HOW DOES IT WORK?

Download the app/plugin from store.mepcontent.com.
Install it.
Start Revit.
Select the Stabiplan ribbon.
Click on the plugin.
Login with your MEPcontent credentials.
Start exporting from Revit to excel or the other way around to make your data better shareable and more accessible for project partners.

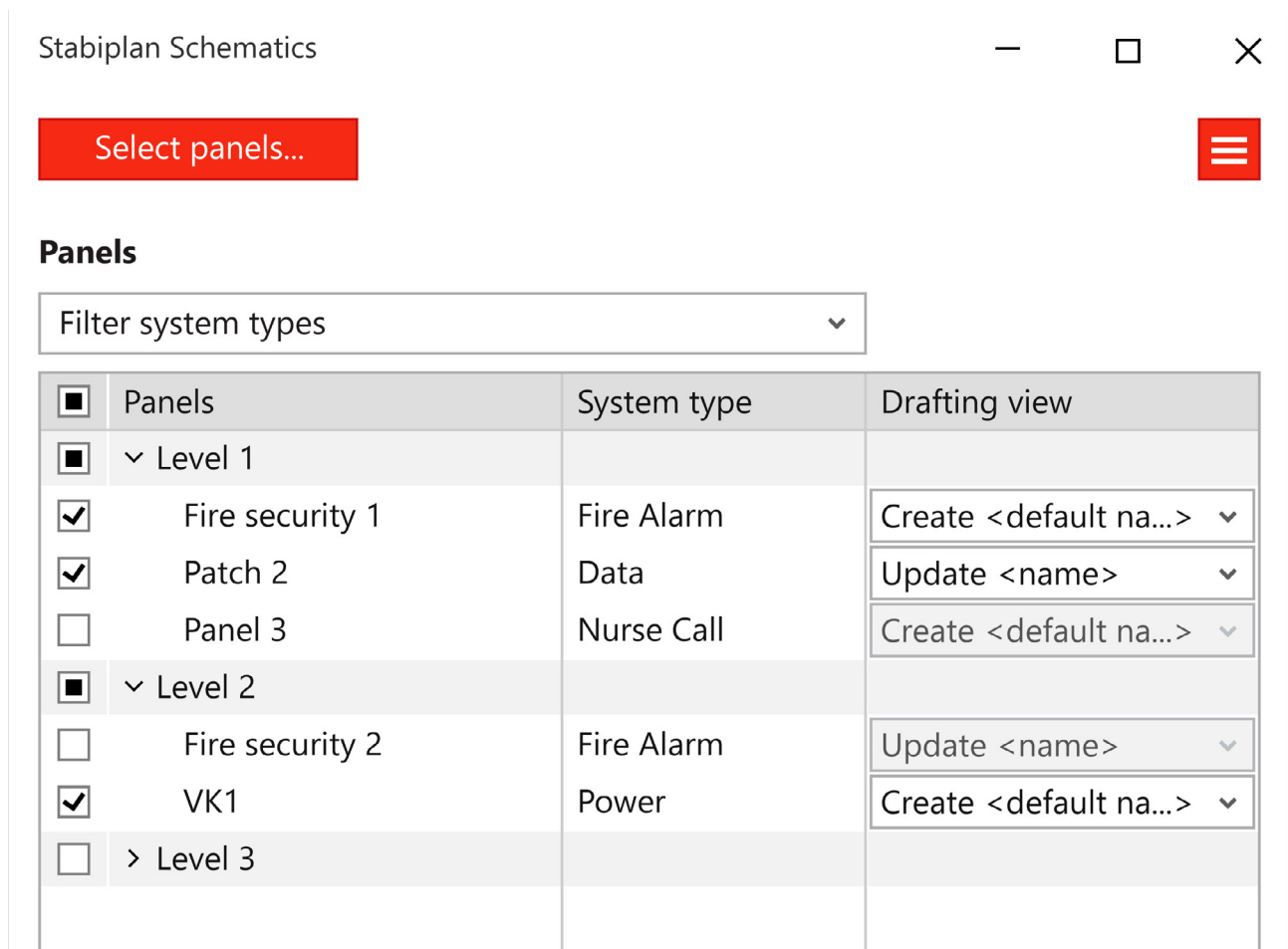
WHAT MAKES IT DIFFERENT FROM PLAIN REVIT?

There is an option to export data from Revit to define the setup with the right parameters. From there, you can adjust or complement the data in Excel.

WHY DOWNLOAD/USE/SUBSCRIBE?

This app will make you way more efficient when it comes to data updates and data sharing from excel to Revit and the other way around. It works so easy that if you try it I will be sure you keep on working with it. A functionality you are really looking for!





STABIPLAN ELECTRICAL SCHEMATICS

WHAT IS IT?

What is it? A paid plugin for Revit to create a schematics diagram from a model. To get an overview of all panels (electrical equipment) used in your electrical project and how they connect with other panels and circuits. Automatically generated out of the model. You see the individual spenders per level.

HOW DOES IT WORK?

Download the app/plugin from store.mepcontent.com.

Install it.

Start Revit.

Select the Stabiplan ribbon.

Click on the plugin.

Login with your MEPcontent credentials.

See the overview of circuits and adjust accordingly.

The model is corrected based on the data you change and still gives a good schematics overview generated from the electrical model.

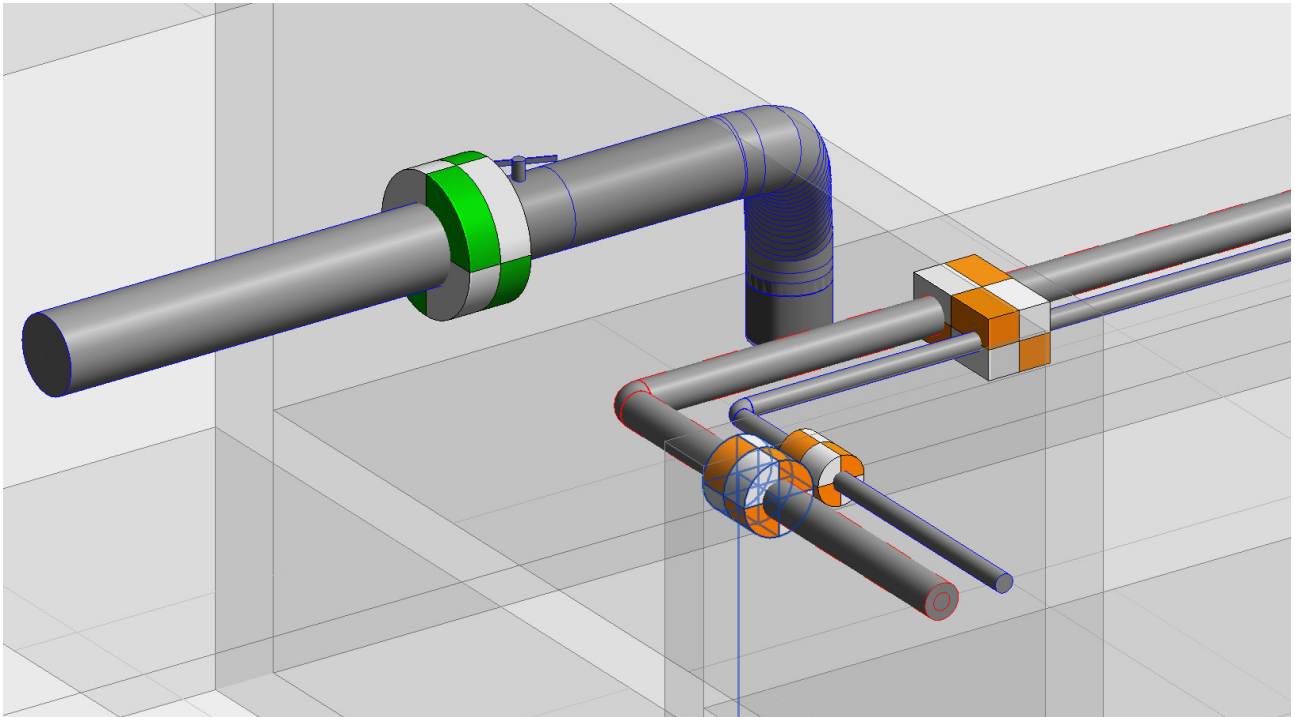
WHAT MAKES IT DIFFERENT FROM PLAIN REVIT?

Plain Revit cannot generate such an overview and especially not do it automatically from the model. So this app will save you a lot of time (and errors doing it manually) while providing you a good overview of all circuits at all times.

WHY DOWNLOAD/USE/SUBSCRIBE?

It makes your live as an electrical engineer much easier and more error prone so you can spend more time on other things that matter.





STABIPLAN RECESSES

WHAT IS IT?

A paid plugin for Revit to create and manage your recesses. It can also be used to communicate with the constructor so that he can approve/decline your recess requests for a better workflow.

HOW DOES IT WORK?

Download the app/plugin from store.mepcontent.com.

Install it.

Start Revit.

Select the Stabiplan ribbon.

Click on the plugin.

Login with your MEPcontent credentials.

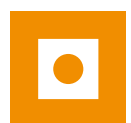
With this app you can make holes in walls and ask others in your project to approve or reject your suggested recesses. With a clear colour coding system in place you will see which recesses are approved, which are declined and which are still pending (waiting for a reaction). You can decide about the margins per recess type. Recesses are automatically combined and contain data about host, system type, pipe and duct. The recesses are automatically generated based on interference check, based on selection or placed manually.

WHAT MAKES IT DIFFERENT FROM PLAIN REVIT?

Plain Revit does not have a recesses functionality so it is a great add-in to use in combination with Revit.

WHY DOWNLOAD/USE/SUBSCRIBE?

Because it gives you a control mechanism for recesses you might not have had before in an easy to use app interface for a small price.





Search valves

Filter valves

Clear

Category Control type Manufacturer Diameter* Pressure stage Temperature range °C - °CMaximum differential pressure at 20°C bar

Replace valve

Select from drawing

Select...

Currently selected

none

Available valves

| | |
|--|---|
| | Category: Balancing valve Manufacturer: Oventrop Article number: 145440 H40 GTIN: 801661540774 |
| | Category: Balancing valve Manufacturer: Oventrop Article number: 145440 H40 GTIN: 801661540774 |
| | Category: Balancing valve Manufacturer: Oventrop Article number: 145440 H40 GTIN: 801661540774 |
| | Category: Balancing valve Manufacturer: Oventrop Article number: 145440 H40 GTIN: 801661540774 |
| | Category: Balancing valve Manufacturer: Oventrop Article number: 145440 H40 GTIN: 801661540774 |



1 - 50 / 500



Selected valve



Category: **Balancing valve**
 Manufacturer: **Oventrop**
 Article number: **145440 H40**
 GTIN: **801661540774**
 Pressure stage: **10**
 Temp. range: **20°C - 120°C**
 M.D.P. at 20°C: **10 bar**

Place

Cancel

MEPcontent

MEPCONTENT PRODUCT LINE PLACER FOR VALVES

WHAT IS IT?

A paid plugin for Revit to place valves in your Revit project.

HOW DOES IT WORK?

Download the app/plugin from store.mepcontent.com.

Install it.

Start Revit.

Select the MEPcontent ribbon.

Click on the plugin.

Login with your MEPcontent credentials.

Access up-to-date valves content, use fast filtering and search options, select from a list of detailed families. Can be placed separately or into/in a pipe. A valve with flange is possible (a contra-flange is automatically added to ensure the valve is correctly locked).

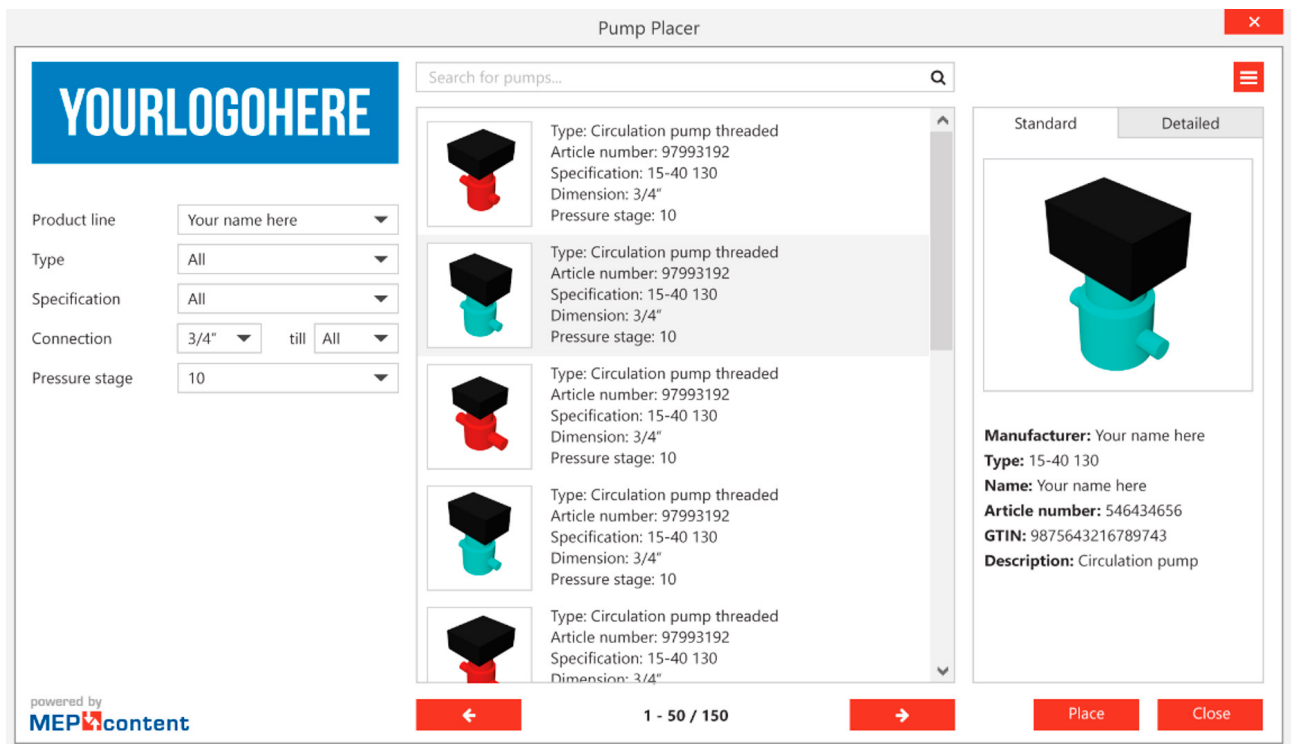
WHAT MAKES IT DIFFERENT FROM PLAIN REVIT?

Plain Revit does not help you with manufacturer specific valves which can be selected based on diameter, pressure and other metrics.

WHY DOWNLOAD/USE/SUBSCRIBE?

Because it helps you to complement a piping system with valves in a far more efficient way than adding family packs. Offering you flexibility and clarity on the valves that meet your project requirements.





MEPCONTENT PRODUCT LINE PLACER FOR PUMPS

WHAT IS IT?

A paid plugin for Revit to place pumps in your Revit project.

HOW DOES IT WORK?

Download the app/plugin from store.mepcontent.com.

Install it.

Start Revit.

Select the MEPcontent ribbon.

Click on the plugin.

Login with your MEPcontent credentials.

Similar to the valves PLiP, this app for Revit helps you select and place the pumps from your favorite manufacturers directly into your Revit project.

WHAT MAKES IT DIFFERENT FROM PLAIN REVIT?

Plain Revit does not help you with manufacturer specific pumps.

WHY DOWNLOAD/USE/SUBSCRIBE?

Because it gives you a configurator to add or change manufacturer specific pumps in your Revit model.



| Rexel Order Information | | | | | | | | | |
|---|---------------|--|---------------------|-----|----------|-------------|-------|-----------|------------|
|   | | | | | | | | | |
| GTIN/ Art. no. | Manufacturer | Description | Category | No. | Price... | Total price | Stock | Date... | Status |
| 4011395050767 | ABB BUSCH-... | future linear Cover frame, studio... | Electrical Fixtures | 89 | € 4.49 | € 399.61 | 633 | 05-Oct-17 | Not export |
| 4011395229064 | ABB BUSCH-... | SCHUKO socket outlet without... | Electrical Fixtures | 31 | € 9.65 | € 299.15 | - | 05-Oct-17 | Not export |
| 4011395995914 | ABB BUSCH-... | Rocker, studio white, Covers for... | Lighting Devices | 12 | € 8.27 | € 99.24 | 82 | 05-Oct-17 | Not export |
| 4011395102527 | ABB BUSCH-... | Rocker Switch Mechanism, Inserts... | Electrical Fixtures | 11 | € 22.82 | € 251.02 | 176 | 05-Oct-17 | Not export |
| 4011395050750 | ABB BUSCH-... | future linear Cover frame, studio... | Electrical Fixtures | 5 | € 4.00 | € 20.00 | 424 | 05-Oct-17 | Not export |
| 4011395995839 | ABB BUSCH-... | Rocker, studio white, Covers for... | Lighting Devices | 5 | € 5.23 | € 26.15 | 529 | 05-Oct-17 | Not export |
| 4011395541005 | ABB BUSCH-... | Rocker Switch Mechanism, Inserts... | Electrical Fixtures | 5 | € 8.25 | € 41.25 | 9082 | 05-Oct-17 | Not export |
| 4011395050774 | ABB BUSCH-... | future linear Cover frame, studio... | Electrical Fixtures | 3 | € 9.43 | € 28.29 | 182 | 05-Oct-17 | Not export |
| 4011395164365 | ABB BUSCH-... | SCHUKO USB socket outlet, studio... | Electrical Fixtures | 3 | € 76.46 | € 229.38 | 79 | 05-Oct-17 | Not export |
| 4011395254905 | ABB BUSCH-... | Socket outlet, white RAL 1013,... | Electrical Fixtures | 1 | € 18.02 | € 18.02 | - | 05-Oct-17 | Not export |
| 4011395996713 | ABB BUSCH-... | Cover plate, studio white, Covers... | Data Devices | 8 | € 10.46 | € 83.68 | 24 | 05-Oct-17 | Not export |
| 4011395213377 | ABB BUSCH-... | UAE connection unit, RJ45, cat. 6e,... | Electrical Fixtures | 8 | € 34.65 | € 277.20 | 98 | 05-Oct-17 | Not export |
| 4011395996751 | ABB BUSCH-... | Cover plate, studio white, Covers... | Data Devices | 6 | € 13.63 | € 81.78 | 113 | 05-Oct-17 | Not export |
| 4011395996416 | ABB BUSCH-... | Cover plate, studio white, Covers... | Data Devices | 6 | € 7.24 | € 43.44 | 118 | 05-Oct-17 | Not export |
| 4011395743706 | ABB BUSCH-... | Mounting plate, Inserts for data... | Electrical Fixtures | 6 | € 7.11 | € 42.66 | 17 | 05-Oct-17 | Not export |
| 4011395809105 | ABB BUSCH-... | Antenna socket insert Radio/TV,... | Electrical Fixtures | 6 | € 46.49 | € 278.94 | 9 | 05-Oct-17 | Not export |
| 4011395996317 | ABB BUSCH-... | Control element, studio white,... | Lighting Devices | 40 | € 29.10 | € 1164.00 | 7 | 05-Oct-17 | Not export |
| 4011395996652 | ABB BUSCH-... | Cover plate, studio white, Control... | Electrical Fixtures | 60 | € 11.72 | € 703.20 | 8 | 05-Oct-17 | Not export |
| 4011395030998 | ABB BUSCH-... | Busch-touch dimmer, Busch-... | Electrical Fixtures | 40 | € 145.52 | € 5820.80 | 11 | 05-Oct-17 | Not export |
| 4011395040904 | ABB BUSCH-... | Blind switch insert, Inserts for... | Electrical Fixtures | 60 | € 24.48 | € 1468.80 | 35 | 05-Oct-17 | Not export |
| 4011395076071 | ABB BUSCH-... | Control element, studio white,... | Lighting Devices | 20 | € 36.34 | € 726.80 | 12 | 05-Oct-17 | Not export |
| 4011395075845 | ABB BUSCH-... | Busch touch-dimmer range, Inserts... | Electrical Fixtures | 20 | € 142.31 | € 2846.20 | 23 | 05-Oct-17 | Not export |
| 6438199003665 | ABB BUSCH-... | Socket outlet | Electrical Fixtures | 12 | € 12.09 | € 145.08 | 124 | 05-Oct-17 | Not export |

MEPCONTENT REXEL ORDER INFORMATION

WHAT IS IT?

A free plugin for Revit with pricing information from wholesaler Rexel.

HOW DOES IT WORK?

Download the app/plugin from store.mepcontent.com.

Install it.

Start Revit.

Select the MEPcontent ribbon.

Click on the plugin.

Login with your MEPcontent credentials.

Get access to actual pricing and stock information for articles in your project. Save price and stock information in the model and use the data on your schedules. Export the article list directly to the Rexel shop shopping cart. Find more product information from the Rexel website within the app.

WHAT MAKES IT DIFFERENT FROM PLAIN REVIT?

Plain Revit does not have Rexel specific pricing and stock information.

WHY DOWNLOAD/USE/SUBSCRIBE?

Because it gives you access to relevant article data and relate it into your BIM model in Revit.





OUR SERVICES

CREATE Have your BIM content created by our content factory. From automatically generated content to apps to showcase your entire product range.

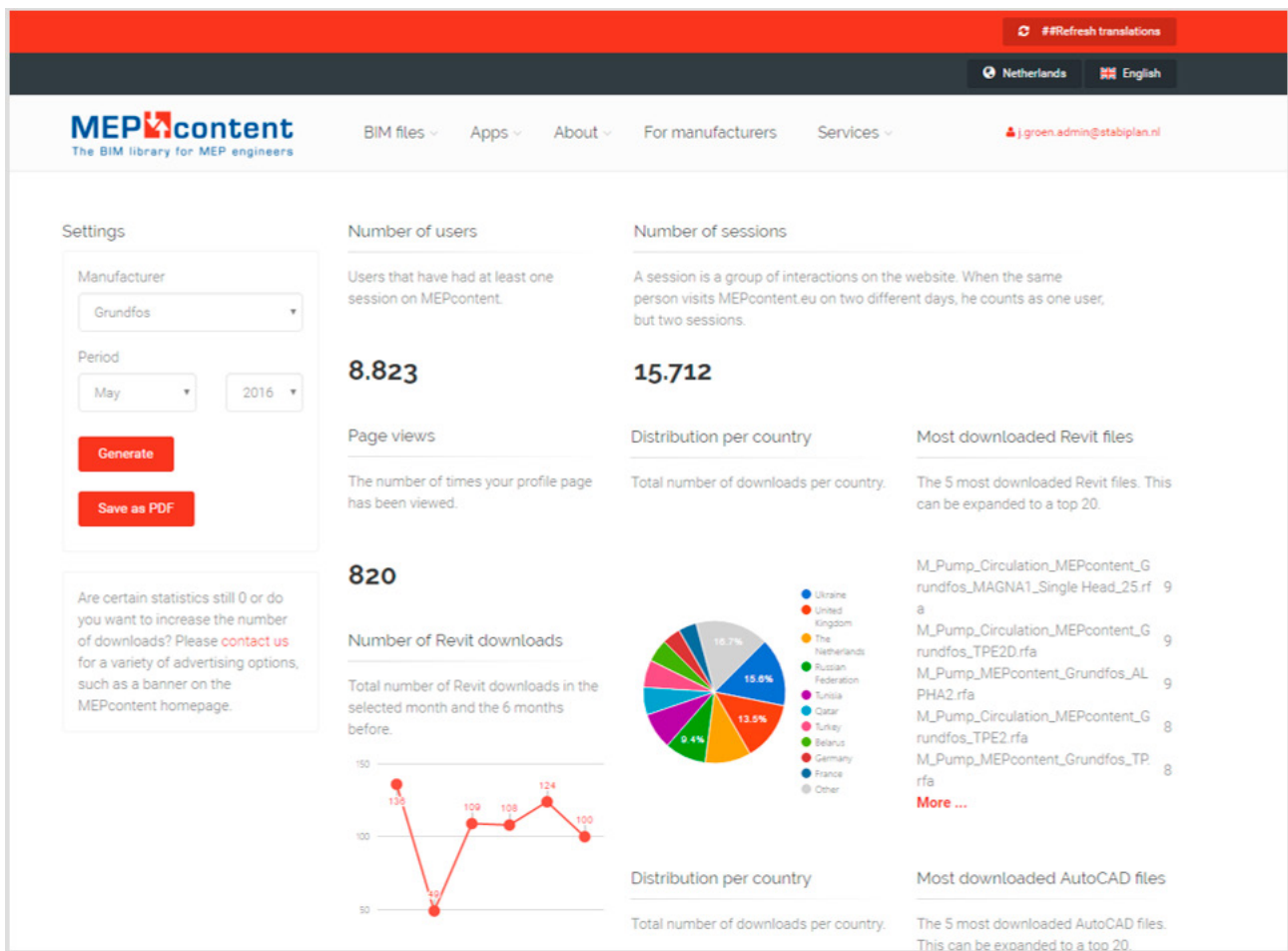
PUBLISH Be present with your products in the BIM workflow of MEP engineers all over Europe, publish your content in our BIM Library.

MARKET Boost brand awareness amongst your target audience, use the MEPcontent marketing tools for extra visibility. This can help you reach new markets and large numbers of relevant MEP engineers globally.

LOCALIZE Engineers can download content available in their country. Customers therefore always work with the right models.

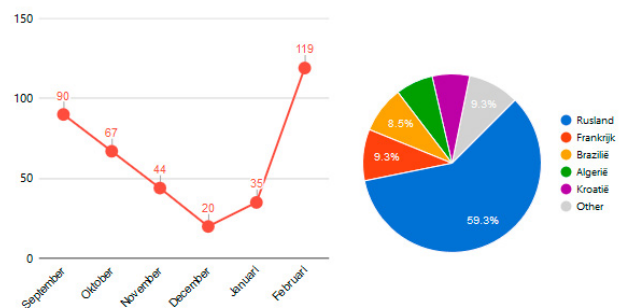
INTEGRATE Provide your website visitors with up-to-date BIM files using our integration service. Link your product pages directly to MEPcontent files.

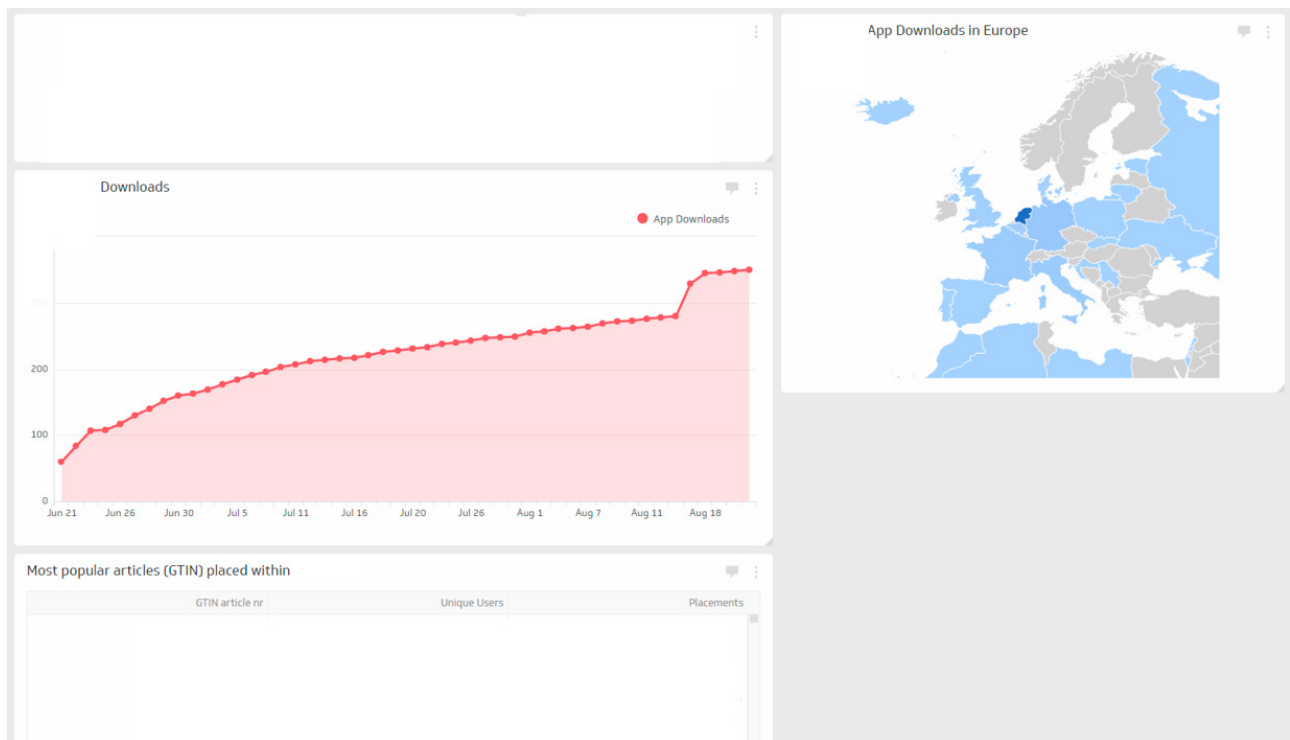
ANALYZE Gain insight into the BIM needs of your target audience with the personalized MEPcontent manufacturer dashboard.



ANALYTICS: OVERALL INSIGHTS

Analytics helps you learn about how well your products are being used and in what countries or to measure what file types are most popular. You can also filter the information down to a time period.



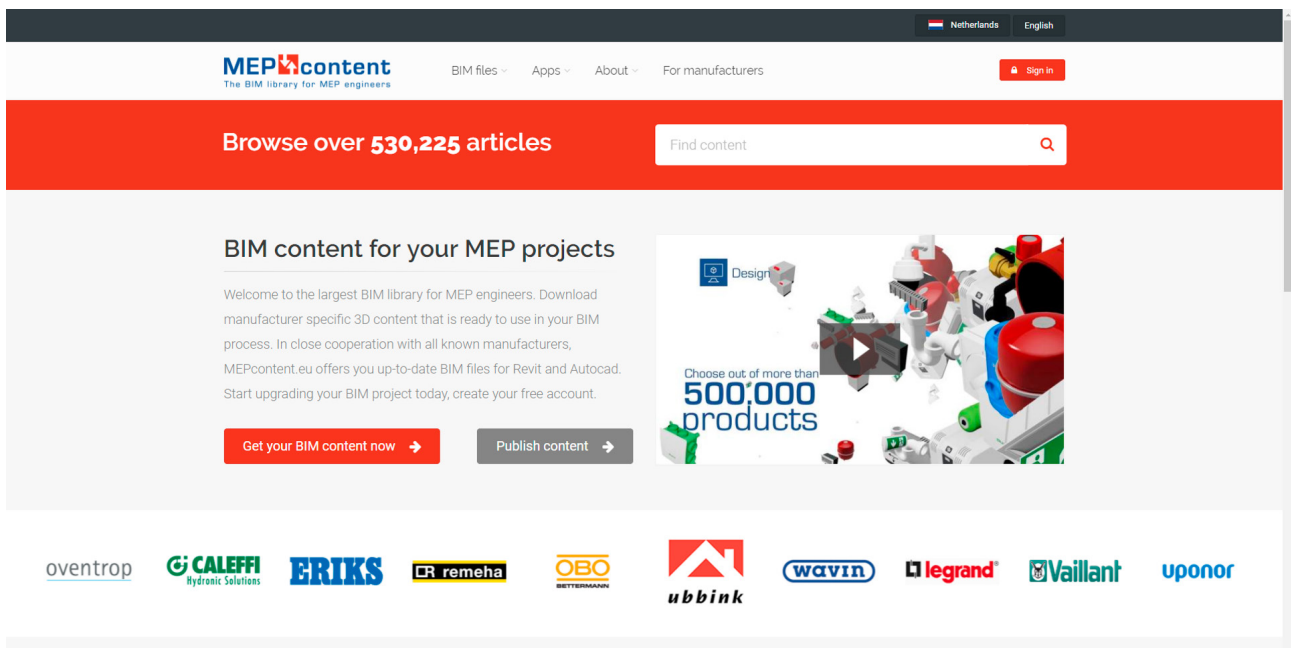


IMPROVED MANUFACTURER DASHBOARD

The apps for Revit provide you with more in-depth information about the behaviour of engineers. For instance, you can find out what GTIN numbers are associated to the articles placed in the actual projects. Based on this you can get a good feeling about what are the most popular products and also create forecasting for stocks or potential order sizes that you can expect in the near future.

You also get an overview of where the downloads come from globally so you get a good understanding of where your growth markets are.





SIGN IN OR CREATE YOUR MEPCONTENT ACCOUNT FOR FREE

I can imagine that you want to get access to the content after hearing all this. Or that those of you working for a manufacturer would also like to publish their content on MEPcontent. For those who want to use it, you can go to the top right corner to Sign in or to create your free account.

Manufacturer representatives can contact me directly on sales@mepcontent.com to discuss the options to make your content BIM ready and available to engineers, designers and modelers globally.

Or you can go to www.mepcontent.eu/manufacturer to find more information!



**FIND US AT INTERCLIMA (FRANCE)
AND BIMWORLD (GERMANY)**



Want to join the next webinar?
mepcontent.eu/events

**HAVE ANY QUESTIONS?
CONTACT US:**

☎ +31 172 63 00 29
✉ MARKETING@MEPCONTENT.COM
🌐 WWW.MEPCONTENT.COM

© 2017 Stabiplan International BV

MEPcontent is a registered trademark of Stabiplan International BV. All other brand and product names are (registered) trademarks of their respective holders.