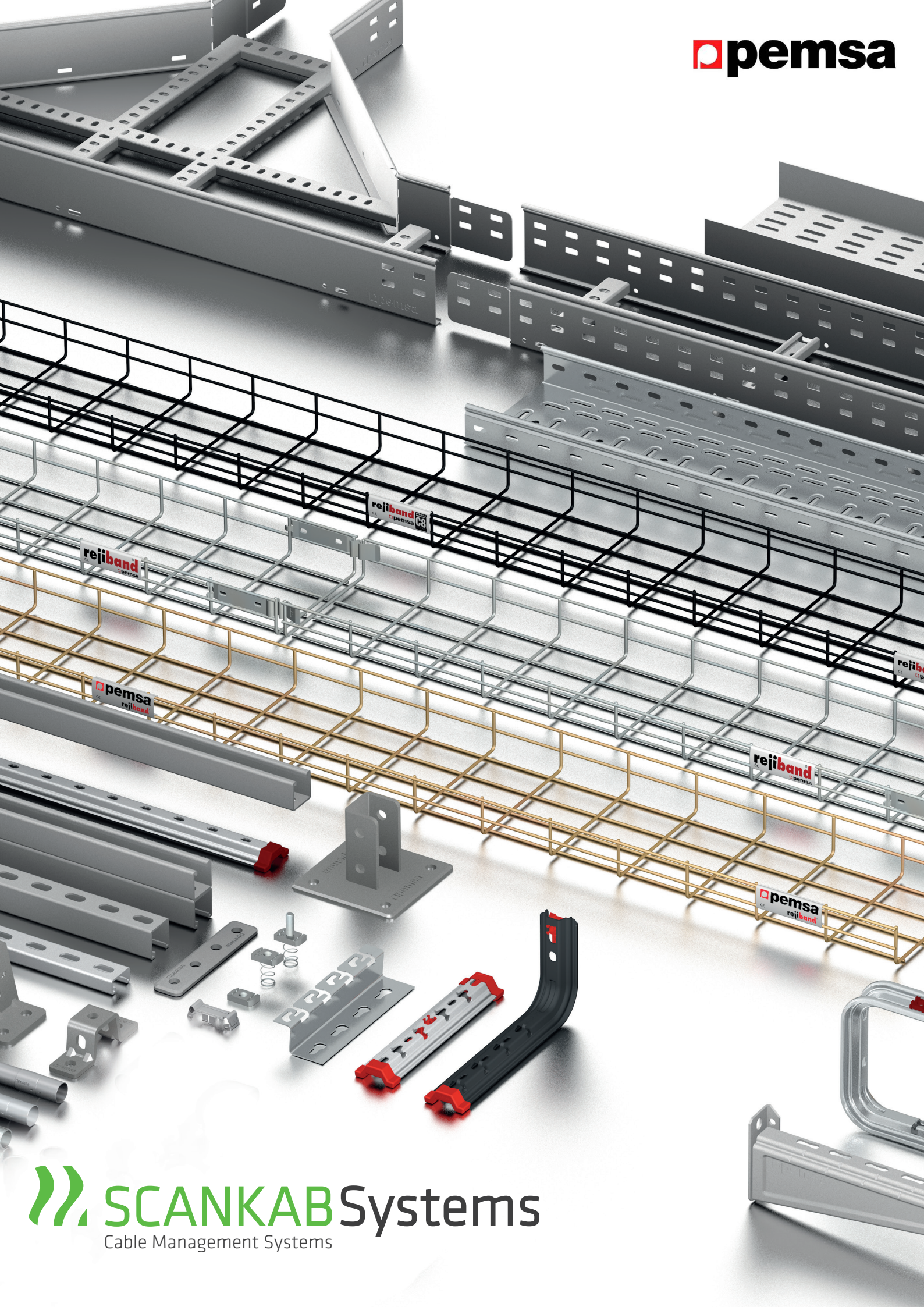


# PRODUKTKATALOG

KABELBAKKER & TILBEHØR

KABELSTIGER & TILBEHØR

GITTERBAKKER & TILBEHØR



# INDHOLDSFORTEGNELSE

Dette produktkatalog indeholder tekniske informationer om vores brede sortiment af kabelbakker og tilbehør.

Søger du informationer om gitterbakker og kabelstiger tilbehør, da henviser vi til vores øvrige produktkataloger.

Se mere på [www.scankabsystems.com](http://www.scankabsystems.com).

## KABELBAKKER

**SIDE**

Monteringsvejledning & internationale standarder 4

---

### Kabelbakker Pemsaband®

LX, SX, RX & Inducanal 6

---

## TILBEHØR

Boltsæt & koblinger 13  
 Låg & deleskinne 14  
 Dåsebeslag, indvendig U-beslag, kantbeskytter & jordklemme 15  
 90° hjørne & -låg 16  
 T-stykke & -låg 17  
 T-tilslutning & -låg 18  
 Kryds & -låg 19  
 Indvendig bøjning & -låg 20  
 Udvendig bøjning & -låg 21  
 Reduktion & bøjning 22  
 Endeafslutning & hjørne 23

---

## OPHÆNGSSYSTEMER

Vægkonsoller 25  
 Loftpendel 26  
 Ankerskinner 27  
 Glidemøtrikker & glidebolte 28  
 Samlinger 29  
 Vinkler 30  
 T-beslag 31  
 Klemmer 32  
 Beslag 33  
 Montering 34

---

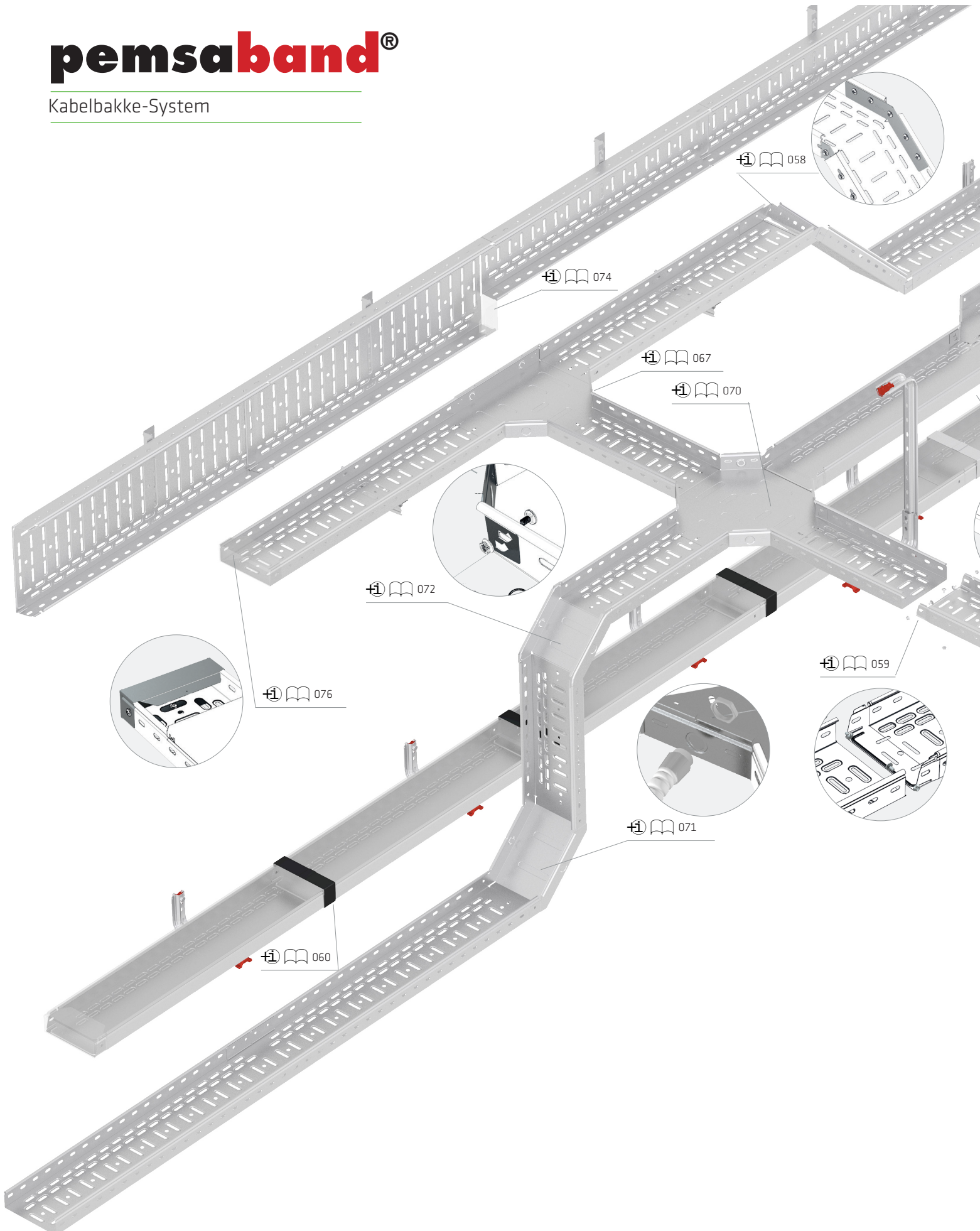
## BOLTE & MØTRIKKER

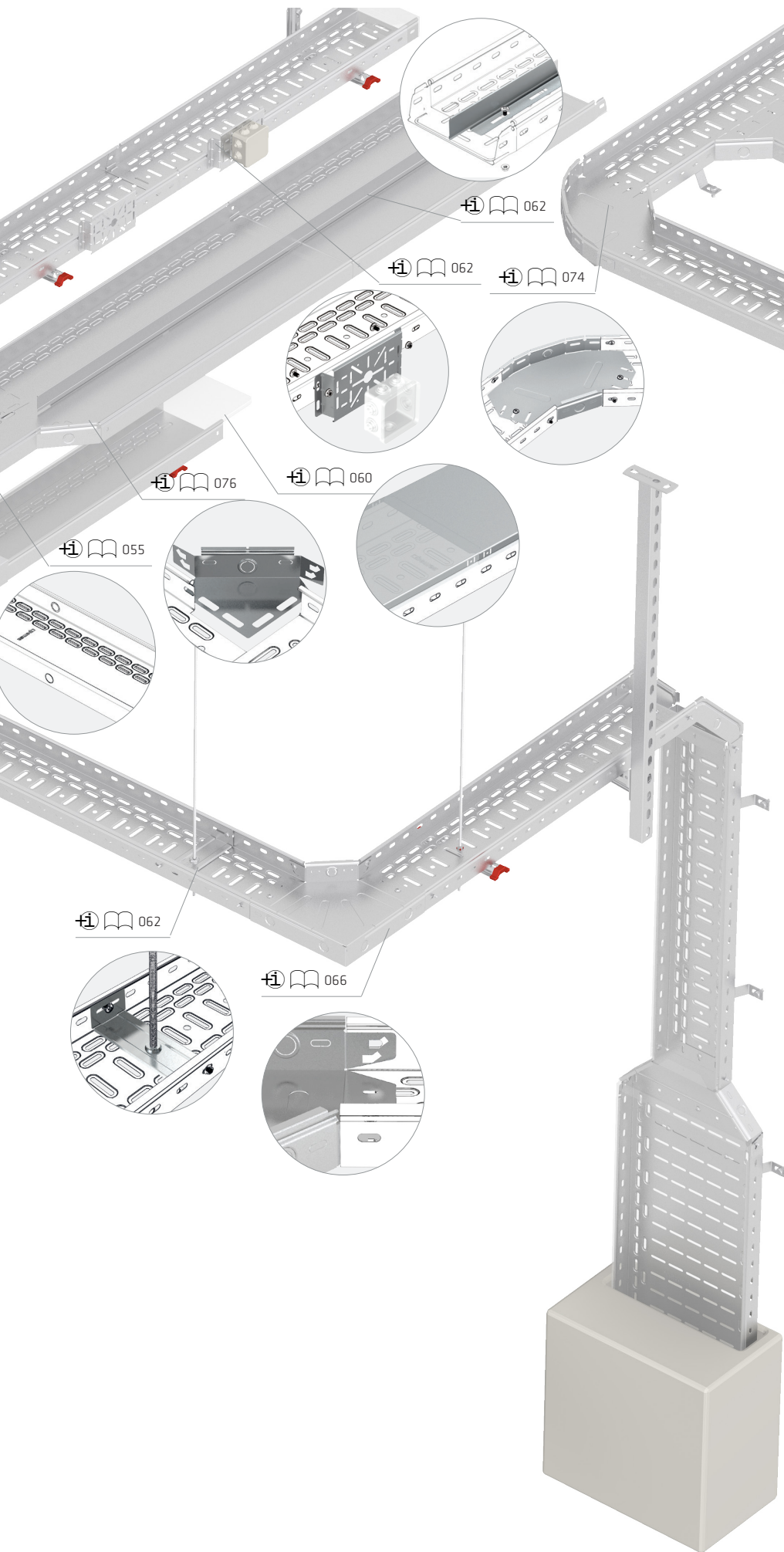
Boltsæt, skruer & flange-møtrikker 38  
 Bolt, møtrik & unbraco 39  
 Bolt, skive & tandskive 40

---

# pemsa**band**®

Kabelbakke-System





International standard på Kabelbakker



Nema VE-1 Standard



DIN 4102-12 Brandsikker



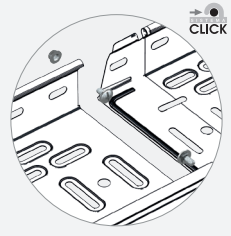
N AENOR IEC 61537



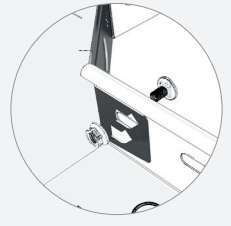
IQNET ISO 9001



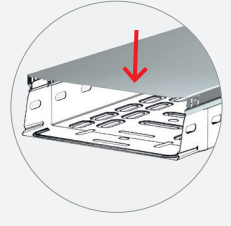
Patenteret produkt



Click System



Universelt tilbehørssystem

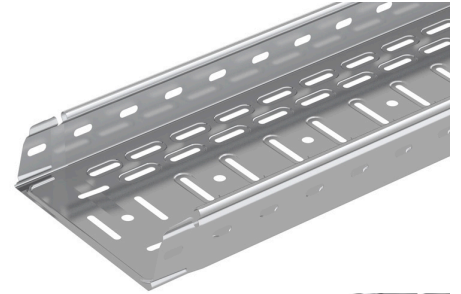


Click System på låg

# pemsaband®

Typer, materiale & overflader

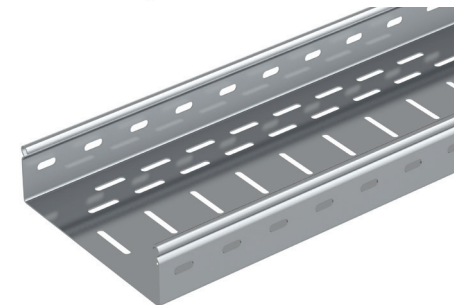
**LX - perforeret CLICK-kabelbakke - let**  
*PG, 304 & 316L*



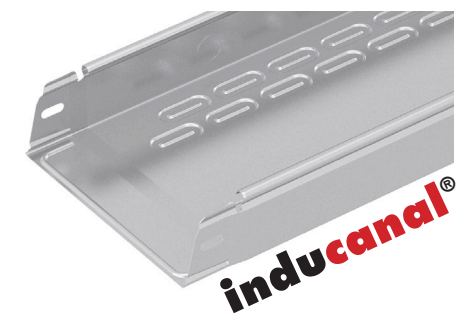
**SX - perforeret CLICK-kabelbakke - kraftig**  
*PG, HDG*



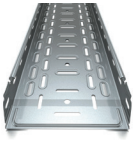
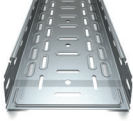

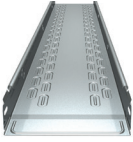
**RX - perforeret kabelbakke - svær**  
*PG, HDG, 394, 316L*



**Inducanal - uperforeret kabelbakke**  
*PG, HDG, 304, 316L*



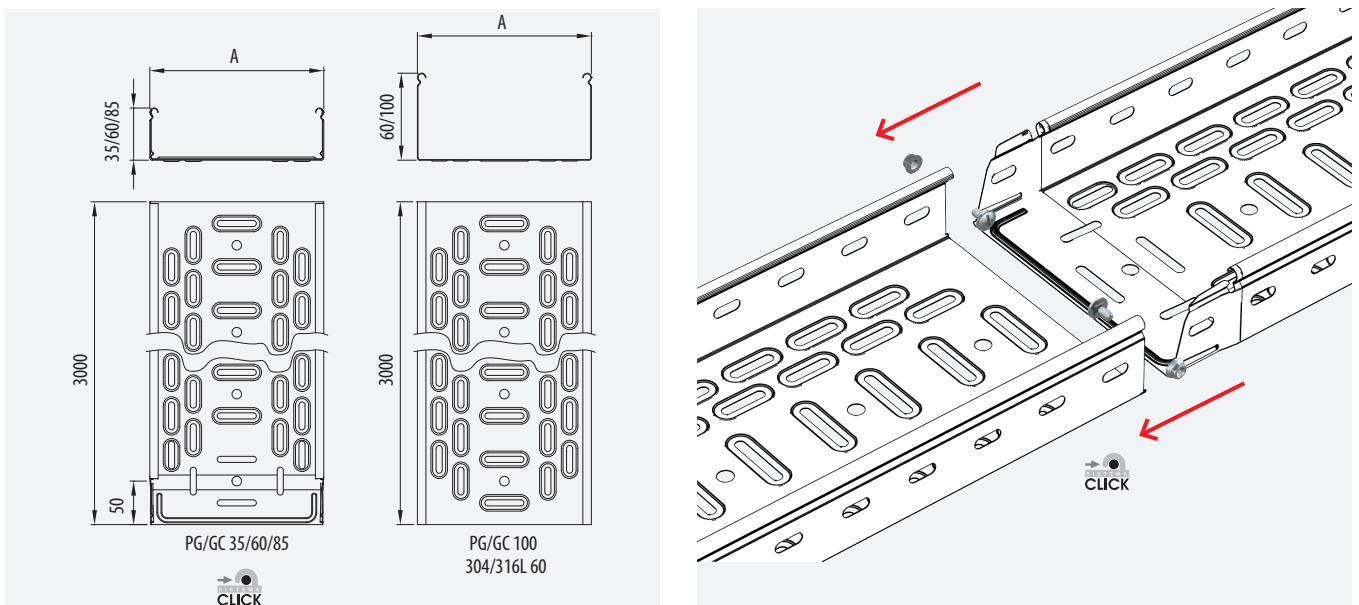
## Størrelser

		⊕	⊖	L	PG	GC	304	316L
<b>pemsaband® LX</b>		35	100-300	3000	●	●		
		60	60-600	3000	●	●	●	●
		85	200-600	3000	●	●		
		100	100-600	3000	●	●		
<b>pemsaband® SX</b>		60	60-400	3000	●	●		
		85	60-600	3000	●	●		
		100	100-600	3000	●	●		
<b>pemsaband® RX</b>		60	100-600	3000	●	●		
		85	200-600	3000				
		100	100-600	3000				
<b>inducanal®</b>		35	100-300	3000	●	●		
		60	60-600	3000	●	●	●	●
		85	200-600	3000	●	●		
		100	100-600	3000	●	●		

## Godkendelser



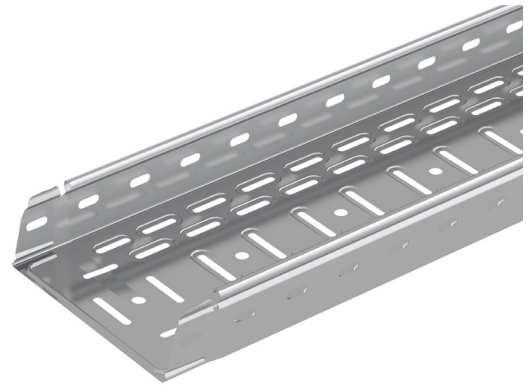
## Målskitse



# pemsa**band**®

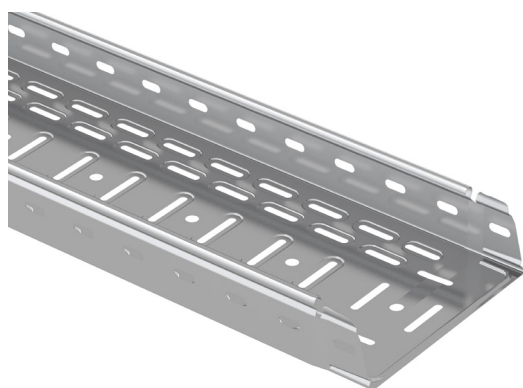
LX - Perforeret CLICK-kabelbakke - let

L: 3000 mm



⊕	⊔	PG	304	316L	kg/m PG	kg/m 304-316L	U
35	100	75821100	-		0,691		24
	150	75821150			0,862		12
	200	75821200			1,241		12
	300	75821300			1,928		12
	400	75821400			2,416		6
60	60	75822060			0,730		24
	100	75822100	76452100	76462100	0,885	0,906	24
	150	75822150	76452150	76462150	1,267	1,076	12
	200	75822200	76452200	76462200	1,473	1,235	12
	300	75822300	76452300	76462300	2,199	1,911	6
	400	75822400	76452400	76462400	2,691	2,335	6
	500	75822500	76452500	76462500	3,666	3,244	6
600	75822600	76452600	76462600	4,223	3,734	6	
85	200	75223200			1,683		6
	300	75223300			2,444		6
	400	75223400			3,409		6
	500	75223500			4,012		6
	600	75223600			4,576		6
100	100	75224100			1,416		12
	200	75224200			2,122		6
	300	75224300			2,612		6
	400	75224400			3,576		6
	500	75224500			4,118		6
	600	75224600			4,669		6
35-60-85		67010093	67060100 + 64060059	67060100 + 64060059			+  058
100 60 - (304, 316L)		71023005 / 93910003	93950002	93960002			+  058





## pemsaband®

SX - Perforeret CLICK-kabelbakke - kraftig

L: 3000 mm

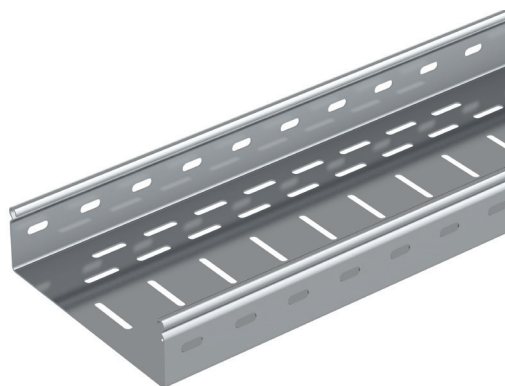


⊕	⊕	PG	HDG	kg/m PG	kg/m GC	U
60	100	75522100	75232100	1,319	1,606	24
	150	75522150	75232150	1,786	1,908	12
	200	75522200	75232200	2,067	2,210	12
	300	75522300	75232300	2,635	2,865	6
	400	75522400	75232400	3,056	4,277	6
	500	75522500	75232500	4,551	5,108	6
85	600	75522600	75232600	5,244	5,880	6
	200	75523200	75533200	2,220	2,580	6
	300	75523300	75533300	2,780	3,235	6
	400	75523400	75533400	4,180	4,720	6
	500	75523500	75533500	4,920	5,560	6
100	600	75523600	75533600	5,610	6,340	6
	100	75524100	75534100	1,652	1,959	12
	200	75524200	75534200	2,429	2,825	6
	300	75524300	75534300	2,989	3,477	6
	400	75524400	75534400	4,400	4,977	6
60-85	500	75524500	75534500	5,137	5,810	6
	600	75524600	75534600	5,827	6,591	6
60-85		67010093	67030093		+  058	
100		71023005 / 93910003	71033005 / 93930003		+  058	

# pemsa**band**®

RX - Perforeret kabelbakke - svær

L: 3000 mm



⊕	⊕	PG		HDG		kg/m PG	kg/m GC	U
60	100	76122100	76132100	2,622	2,852	6		
	200	76122200	76132200	3,538	3,857	6		
	300	76122300	76132300	4,646	5,057	6		
	400	76122400	76132400	5,690	6,193	6		
	500	76122500	76132500	6,787	7,395	6		
	600	76122600	76132600	7,889	8,589	6		
85	200	76123200	76133200	4,058	4,423	6		
	300	76123300	76133300	5,166	5,623	6		
	400	76123400	76133400	6,211	6,759	6		
	500	76123500	76133500	7,315	7,970	6		
	600	76123600	76133600	8,417	9,164	6		
100	100	76124100	76134100	3,490	3,796	6		
	200	76124200	76134200	4,485	4,881	6		
	300	76124300	76134300	5,519	6,007	6		
	400	76124400	76134400	6,564	7,143	6		
	500	76124500	76134500	7,644	8,328	6		
	600	76124600	76134600	8,831	9,607	6		
60	100-600	71022005+67010093	71032005+67030093					
85-100	100-600	71023005+67010093	71033005+67030093					
60-85-100	300-600	71020XXX+67010093	71030XXX+67030093					



## inducanal®

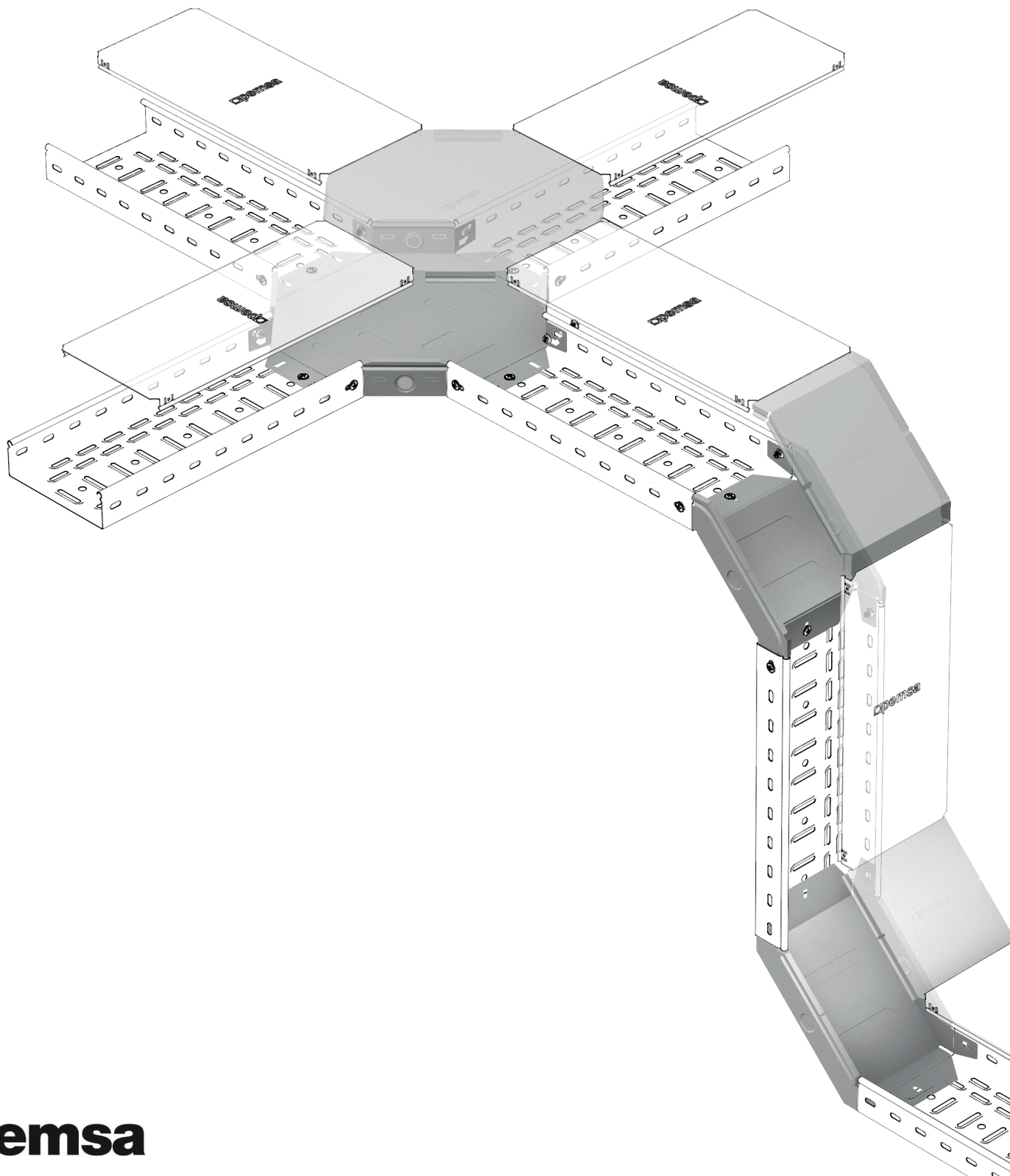
Uperforeret kabelbakke

L: 3000 mm

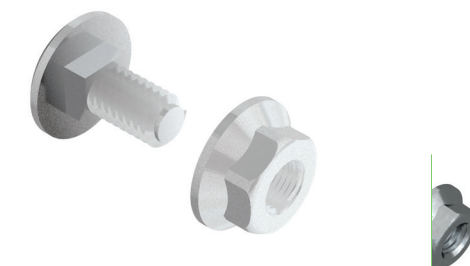


Højde	Bredde	PG	HDG	304	316L	kg/m PG	kg/m GC	kg/m 304-316L	U
35	100	75121100	75131100			0,702	0,885		24
	150	75121150	75131150			0,874	1,101		12
	200	75121200	75131200			1,262	1,536		12
	300	75121300	75131300			1,690	2,058		12
60	60	75122060	75132060			0,789	0,993		24
	100	75122100	75132100	76552100	76562100	0,901	1,135	0,949	24
	150	75122150	75132150	76552150	76562150	1,287	1,565	1,147	12
	200	75122200	75132200	76552200	76562200	1,500	1,826	1,345	12
	300	75122300	75132300	76552300	76562300	2,233	2,649	2,093	6
	400	75122400	75132400	76552400	76562400	2,741	3,252	2,572	6
	500	75122500	75132500	76552500	76562500	3,727	4,334	3,550	6
85	600	75122600	75132600	76552600	76562600	4,635	5,391	4,116	6
	200	75423200	75433200			1,832	2,225		6
	300	75423300	75433300			2,676	3,170		6
	400	75423400	75433400			3,736	4,329		6
	500	75423500	75433500			4,377	5,071		6
100	600	75423600	75433600			5,018	5,814		6
	100	75424100	75434100			1,504	1,828		12
	200	75424200	75434200			2,294	2,716		6
	300	75424300	75434300			2,843	3,366		6
	400	75424400	75434400			3,877	4,502		6
	500	75424500	75434500			4,505	5,231		6
35-60-85		67010093	67030093	67060100 + 64060059	67060100 + 64060059	+  058			
100 60 - (304, 316L)		71023005 / 93910003	71033005 / 93930003	93960002	93960002	+  058			

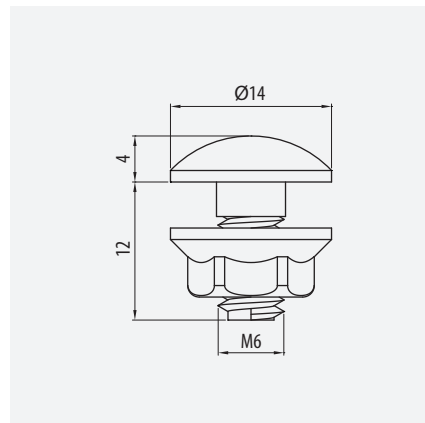
# TILBEHØR



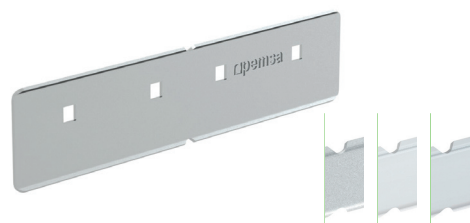
Boltsæt



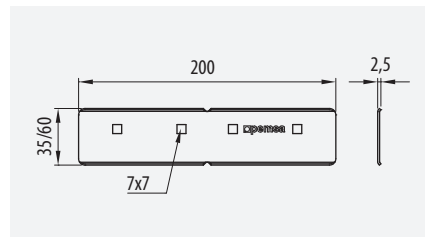
	M	Ref	kg/u	u
<b>EZ</b>	M6	67010093	0,008	100
<b>GC</b>	M6	67030093	0,009	100



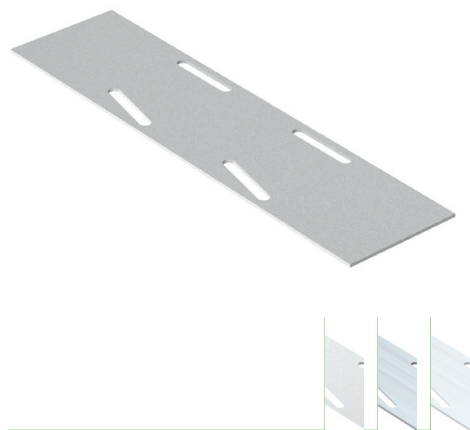
Koblingsbeslag, side



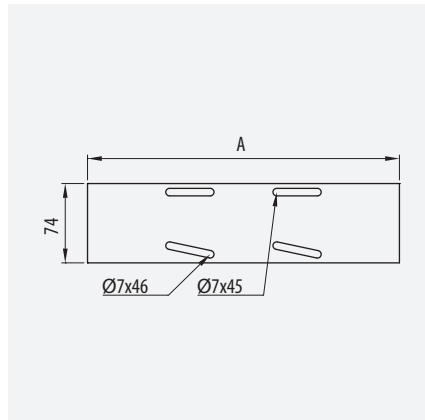
	A	Ref	kg/u	u
<b>PG</b>	35	71021005	0,040	50
	60	71022005	0,102	50
	85/100	71023005	0,154	25
<b>GC</b>	35	71031005	0,043	50
	60	71032005	0,118	50
	85/100	71033005	0,171	25
<b>304</b>	60	93950002	0,075	50
<b>316L</b>	60	93960002	0,075	50



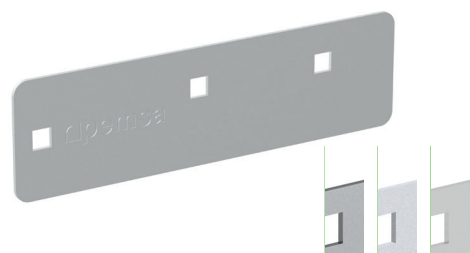
Koblingsbeslag, bund



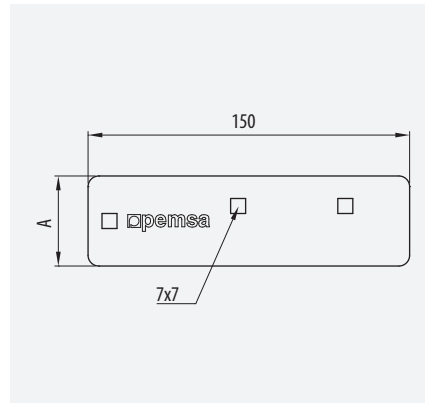
	A	Ref	kg/u	u
<b>PG</b>	300	71020300	0,371	10
	400	71020400	0,493	10
	500	71020500	0,615	10
	600	71020600	0,738	10
	<b>GC</b>	300	71030300	0,390
	400	71030400	0,516	10
	500	71030500	0,645	10
	600	71030600	0,773	10
<b>304</b>	300	71050300	0,240	10
	400	71050400	0,323	10
	500	71050500	0,398	10
<b>316L</b>	600	71050600	0,480	10
	300	71160300	0,240	10
	400	71160400	0,323	10
	500	71160500	0,398	10
	600	71160600	0,480	10



Universal koblingsbeslag



	A	Ref	kg/u	u
<b>PG</b>	35	71021006	0,028	4
	60	71022006	0,073	4
<b>GC</b>	35	71031006	0,031	4
	60	71032006	0,079	4
<b>304</b>	60	93950012	0,057	8
<b>316L</b>	60	93960012	0,057	8

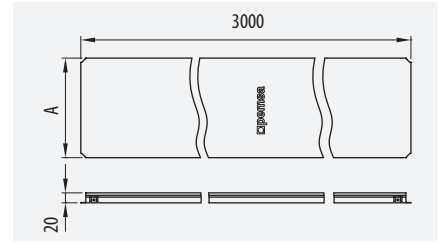


Låg



[ ] • [ ] 35-60-85-100 • [ ] 60-600

	A	Ref	kg/u	u
<b>PG</b>	60	73021060	0,462	24
	100	73021100	0,653	24
	150	73021150	0,892	12
	200	73021200	1,131	12
	300	73021300	1,890	6
	400	73021400	2,452	6
	500	73021500	3,437	6
<b>GC</b>	60	73031060	0,617	24
	100	73031100	0,872	24
	150	73031150	1,190	12
	200	73031200	1,507	12
	300	73031300	2,424	6
	400	73031400	3,823	6
	450	73031450	3,556	6
<b>304</b>	500	73031500	4,700	6
	600	73031600	5,577	6
	60	73051060	0,385	24
	100	73051100	0,544	24
	150	73051150	0,750	12
	200	73051200	0,957	12
	300	73051300	1,380	6
400	73051400	2,116	6	
500	73051500	2,602	6	
600	73051600	3,577	6	



[ ] • [ ] 35-60-85-100 • [ ] 60-600

	A	Ref	kg/u	u
<b>316L</b>	60	73061060	0,385	24
	100	73061100	0,544	24
	150	73061150	0,750	12
	200	73061200	0,957	12
	300	73061300	1,380	6
	400	73061400	2,116	6
	500	73061500	2,602	6
	600	73061600	3,577	6

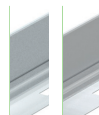
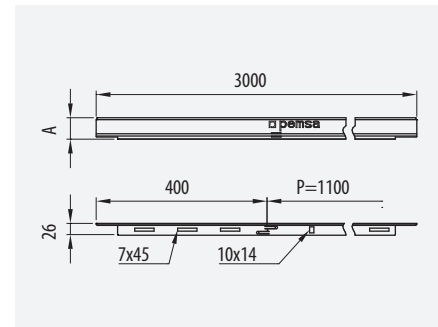


Deleskinne CLICK

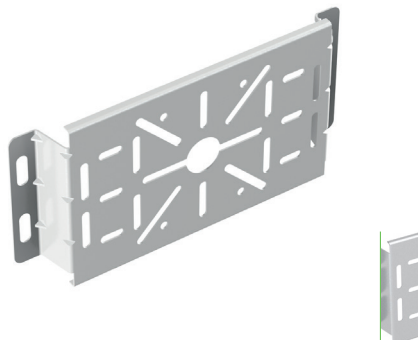


[ ] • [ ] 35-60-85-100 • [ ] 60-600

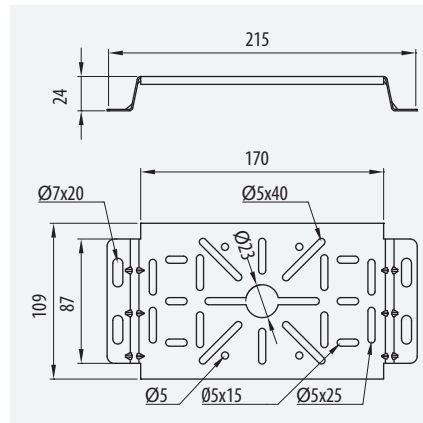
	A	Ref	kg/u	u
<b>PG</b>	25	67020610	0,212	60
	50	67020611	0,312	48
	80	67020612	0,444	36
<b>GC</b>	25	67030610	0,261	60
	50	67030611	0,384	48
	80	67030612	0,541	36
<b>316L</b>	25	67060610	0,207	60
	50	67060611	0,305	48
	80	67060612	0,430	36



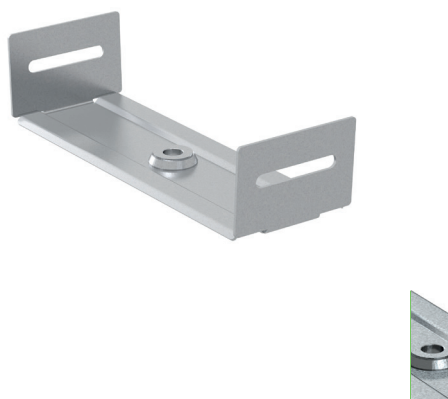
## Dåsebeslag



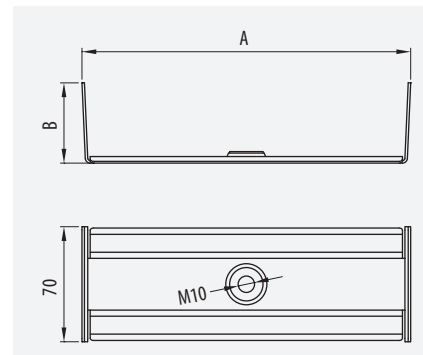
	Ref	kg/u	u
<b>PG</b>	70420911	0,179	10
<b>HDG</b>	70430911	0,197	10



## Indvendig U-beslag



	A	Ref	kg/u	u
<b>EZ</b>	100	70122210	0,157	10
	150	70122215	0,198	10
	200	70122220	0,239	10
	300	70122230	0,321	10
<b>GC</b>	100	70132210	0,167	10
	150	70132215	0,211	10
	200	70132220	0,255	10
	300	70132230	0,342	10
	400	70132240	0,431	10

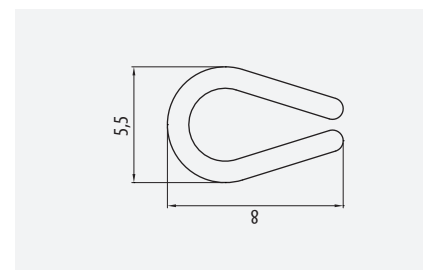


A	↓CTA↓ (kg)	A	↓CTA↓ (kg)
100	40	200	27
150	35	300	20

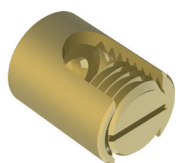
## Kant-beskytter



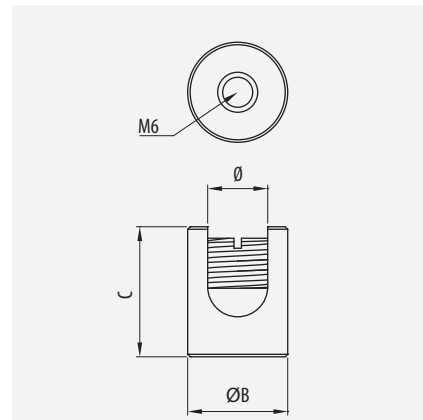
Ref	kg/u	u
71000000	0,032	25



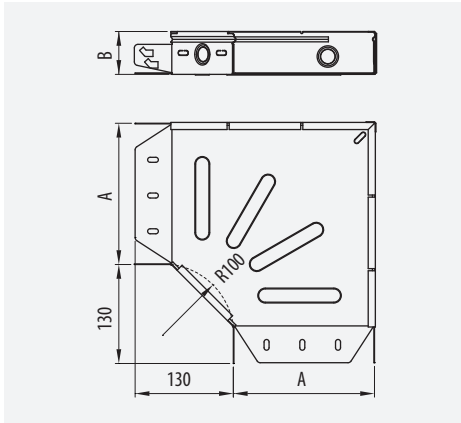
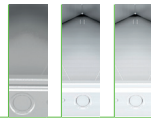
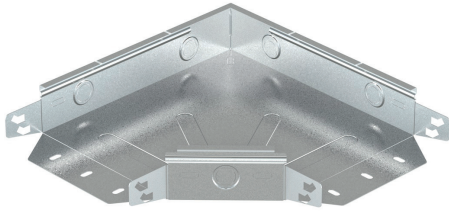
## Jordklemme, messing



	A (mm <sup>2</sup> )	Ø máx (mm)	Ref	kg/u	u
<b>LAT</b>	16-50	8,0	68000034	0,024	20
	50-110	11,5	68000035	0,043	20



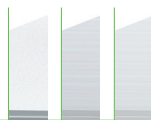
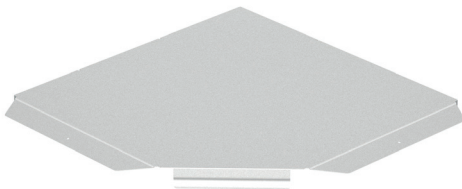
90° hjørne, CLICK



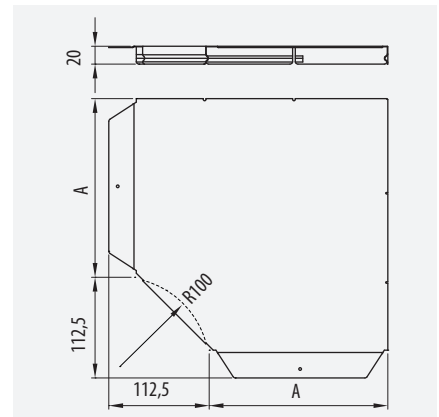
		35-60-85-100		60-600	
	A	B	Ref	kg/u	u
<b>PG</b>	35	100	70020110	0,272	1
	35	150	70020115	0,419	1
	35	200	70020120	0,683	1
	35	300	70020130	1,152	1
	60	60	70020206	0,362	1
	60	100	70020210	0,362	1
	60	150	70020215	0,516	1
	60	200	70020220	0,809	1
	60	300	70020230	1,306	1
	60	400	70020240	1,912	1
	60	500	70020250	3,003	1
	60	600	70020260	3,947	1
	85	200	70020320	0,930	1
	85	300	70020330	1,455	1
	85	400	70020340	2,088	1
	85	500	70020350	3,198	1
	85	600	70020360	4,211	1
	<b>HDC</b>	100	100	70020410	0,443
100		200	70020420	1,009	1
100		300	70020430	1,550	1
100		400	70020440	2,201	1
100		500	70020450	3,385	1
100		600	70020460	4,379	1
35		100	70030110	0,358	1
35		150	70030115	0,551	1
35		200	70030120	0,879	1
35		300	70030130	1,483	1

		35-60-85-100		60-600	
	A	B	Ref	kg/u	u
<b>HDC</b>	60	100	70030210	0,475	1
	60	150	70030215	0,679	1
	60	200	70030220	1,042	1
	60	300	70030230	1,681	1
	60	400	70030240	2,461	1
	60	500	70030250	3,382	1
	60	600	70030260	4,444	1
	85	200	70030320	1,198	1
	85	300	70030330	1,873	1
	85	400	70030340	2,688	1
	85	500	70030350	3,399	1
	85	600	70030360	4,742	1
	100	100	70030410	0,669	1
	100	200	70030420	1,226	1
	100	300	70030430	1,883	1
	100	400	70030440	2,674	1
	100	500	70030450	3,597	1
	100	600	70030460	4,655	1
<b>304</b>	60	100	70050210	0,297	1
	60	150	70050215	0,423	1
	60	200	70050220	0,568	1
	60	300	70050230	0,919	1
	60	400	70050240	1,347	1
	60	500	70050250	1,854	1
<b>316L</b>	60	600	70050260	2,441	1
	60	100	70060210	0,297	1
	60	150	70060215	0,423	1
	60	200	70060220	0,568	1
	60	300	70060230	0,919	1
	60	400	70060240	1,347	1
60	500	70060250	1,854	1	
60	600	70060260	2,441	1	

90° hjørne-låg, CLICK



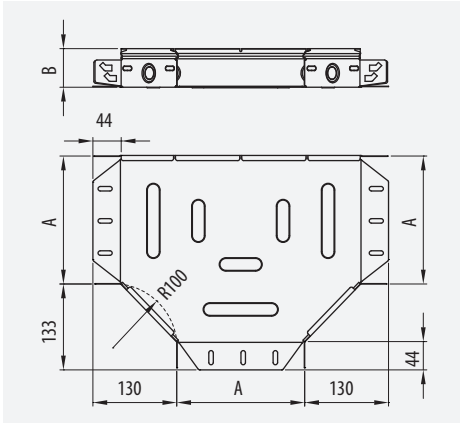
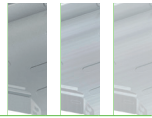
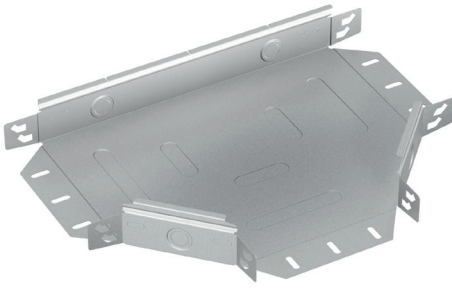
		35-60-85-100		60-600	
	A	Ref	kg/u	u	
<b>PG</b>	60	73020060	0,200	1	
	100	73020100	0,200	1	
	150	73020150	0,320	1	
	200	73020200	0,543	1	
	300	73020300	0,962	1	
	400	73020400	1,491	1	
	500	73020500	2,435	1	
	600	73020600	3,292	1	
<b>HDC</b>	100	73030100	0,263	1	
	150	73030150	0,421	1	
	200	73030200	0,698	1	
	300	73030300	1,237	1	
	400	73030400	1,918	1	
	500	73030500	2,741	1	
<b>304</b>	600	73030600	3,703	1	
	100	73050100	0,167	1	
	150	73050150	0,267	1	
	200	73050200	0,387	1	
	300	73050300	0,687	1	
	400	73050400	1,065	1	
500	73050500	1,522	1		
600	73050600	2,058	1		



		35-60-85-100		60-600	
	A	Ref	kg/u	u	
<b>316L</b>	100	73060100	0,167	1	
	150	73060150	0,267	1	
	200	73060200	0,387	1	
	300	73060300	0,687	1	
	400	73060400	1,065	1	
	500	73060500	1,522	1	
600	73060600	2,058	1		



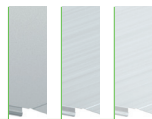
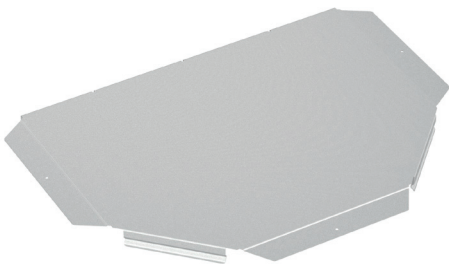
T-stykke, CLICK



		35-60-85-100		100-600	
	A	B	Ref	kg/u	$\frac{u}{u}$
<b>PG</b>	35	100	70022110	0,347	1
	35	150	70022115	0,518	1
	35	200	70022120	0,823	1
	35	300	70022130	1,153	1
	60	100	70022210	0,450	1
	60	150	70022215	0,621	1
	60	200	70022220	0,949	1
	60	300	70022230	1,484	1
	60	400	70022240	2,126	1
	60	500	70022250	3,290	1
	60	600	70022260	4,275	1
	85	200	70022320	1,075	1
	85	300	70022330	1,622	1
	85	400	70022340	2,279	1
	85	500	70022350	3,479	1
	85	600	70022360	4,481	1
	100	100	70022410	0,581	1
	100	200	70022420	1,120	1
100	300	70022430	1,667	1	
100	400	70022440	2,324	1	
100	500	70022450	3,533	1	
100	600	70022460	4,536	1	
<b>HDG</b>	35	100	70032110	0,457	1
	35	150	70032115	0,682	1
	35	200	70032120	1,060	1
	35	300	70032130	1,730	1
	60	100	70032210	0,592	1
	60	150	70032215	0,816	1
	60	200	70032220	1,223	1
	60	300	70032230	1,910	1
	60	400	70032240	2,737	1
	60	500	70032250	3,705	1
	60	600	70032260	4,815	1

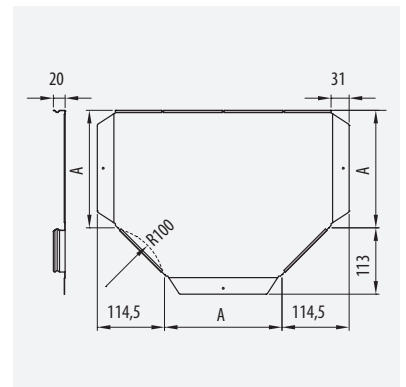
		35-60-85-100		100-600	
	A	B	Ref	kg/u	$\frac{u}{u}$
<b>HDG</b>	85	200	70032320	1,383	1
	85	300	70032330	2,088	1
	85	400	70032340	2,933	1
	85	500	70032350	3,919	1
	85	600	70032360	5,046	1
	100	100	70032410	0,809	1
	100	200	70032420	1,201	1
	100	300	70032430	1,787	1
	100	400	70032440	2,491	1
	100	500	70032450	3,755	1
	100	600	70032460	4,820	1
	<b>304</b>	60	100	70052210	0,368
60		150	70052215	0,506	1
60		200	70052220	0,664	1
60		300	70052230	1,039	1
60		400	70052240	1,493	1
60		500	70052250	2,025	1
<b>316L</b>	60	600	70052260	2,636	1
	60	100	70062210	0,368	1
	60	150	70062215	0,506	1
	60	200	70062220	0,664	1
	60	300	70062230	1,039	1
	60	400	70062240	1,493	1
	60	500	70062250	2,025	1
	60	600	70062260	2,636	1

T-stykke låg, CLICK

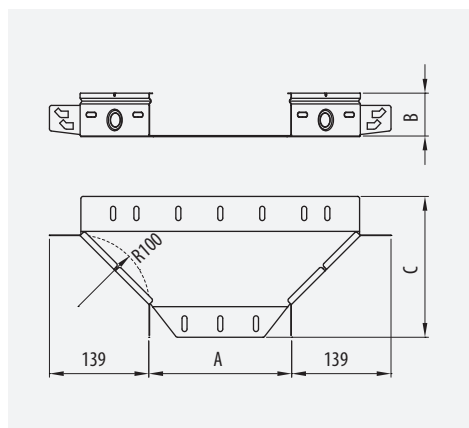
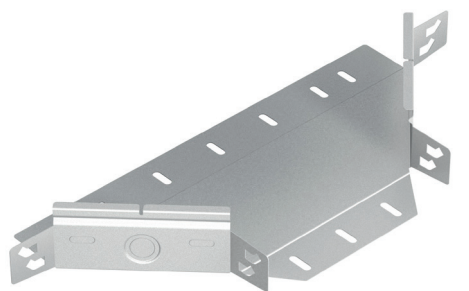


		35-60-85-100		100-600	
	A	Ref	kg/u	$\frac{u}{u}$	
<b>PG</b>	100	73022100	0,266	1	
	150	73022150	0,410	1	
	200	73022200	0,674	1	
	300	73022300	1,147	1	
	400	73022400	1,730	1	
	500	73022500	2,769	1	
	600	73022600	3,687	1	
	100	73032100	0,350	1	
	150	73032150	0,539	1	
	200	73032200	0,867	1	
	300	73032300	1,476	1	
	400	73032400	2,225	1	
500	73032500	3,117	1		
600	73032600	4,150	1		
<b>HDG</b>	100	73052100	0,222	1	
	150	73052150	0,342	1	
	200	73052200	0,481	1	
	300	73052300	0,819	1	
	400	73052400	1,236	1	
	500	73052500	1,731	1	
<b>304</b>	600	73052600	2,304	1	

		35-60-85-100		100-600	
	A	Ref	kg/u	$\frac{u}{u}$	
<b>316L</b>	100	73062100	0,222	1	
	150	73062150	0,342	1	
	200	73062200	0,481	1	
	300	73062300	0,819	1	
	400	73062400	1,236	1	
	500	73062500	1,731	1	
	600	73062600	2,304	1	



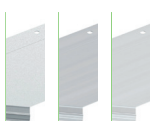
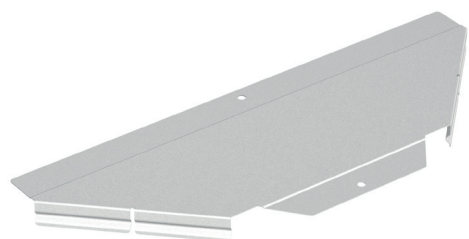
T-tilslutning, CLICK



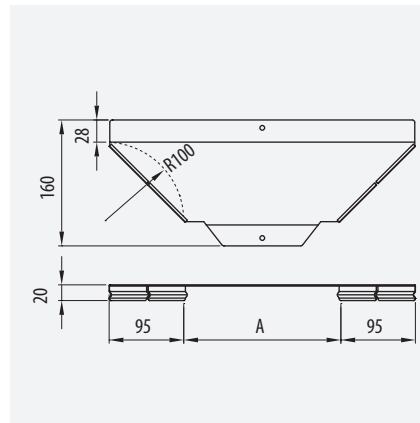
35-60-85-100 • 60-600					
	A	B	Ref	kg/u	u
<b>PG</b>	35	100	70023110	0,215	1
	35	150	70023115	0,259	1
	35	200	70023120	0,357	1
	35	300	70023130	0,462	1
	60	60	70023206	0,212	1
	60	100	70023210	0,265	1
	60	150	70023215	0,310	1
	60	200	70023220	0,414	1
	60	300	70023230	0,519	1
	60	400	70023240	0,624	1
	60	500	70023250	0,833	1
	60	600	70023260	0,953	1
	85	200	70023320	0,476	1
	85	300	70023330	0,564	1
	85	400	70023340	0,686	1
	85	500	70023350	0,904	1
	85	600	70023360	1,024	1
	<b>GC</b>	100	100	70023410	0,373
100		200	70023420	0,511	1
100		300	70023430	0,616	1
100		400	70023440	0,721	1
100		500	70023450	0,944	1
100		600	70023460	1,064	1
35		100	70033110	0,282	1
35		150	70033115	0,343	1
35		200	70033120	0,459	1
35		300	70033130	0,594	1

35-60-85-100 • 60-600					
	A	B	Ref	kg/u	u
<b>GC</b>	60	100	70033210	0,347	1
	60	150	70033215	0,407	1
	60	200	70033220	0,532	1
	60	300	70033230	0,668	1
	60	400	70033240	0,803	1
	60	500	70033250	0,938	1
	60	600	70033260	1,073	1
	85	200	70033320	0,612	1
	85	300	70033330	0,731	1
	85	400	70033340	0,851	1
	85	500	70033350	0,971	1
	85	600	70033360	1,091	1
	100	100	70033410	0,498	1
	100	200	70033420	0,621	1
	100	300	70033430	0,749	1
	100	400	70033440	0,876	1
	100	500	70033450	1,004	1
	100	600	70033460	1,131	1
<b>304</b>	60	100	70053210	0,237	1
	60	150	70053215	0,275	1
	60	200	70053220	0,313	1
	60	300	70053230	0,391	1
	60	400	70053240	0,468	1
	60	500	70053250	0,518	1
<b>316L</b>	60	600	70053260	0,592	1
	60	100	70063210	0,237	1
	60	150	70063215	0,275	1
	60	200	70063220	0,313	1
	60	300	70063230	0,391	1
	60	400	70063240	0,468	1
60	500	70063250	0,518	1	
60	600	70063260	0,592	1	

T-tilslutning - låg, CLICK

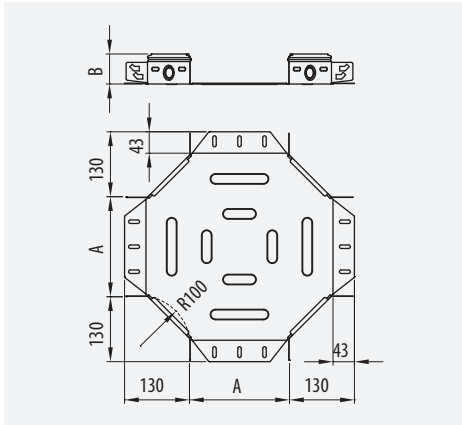
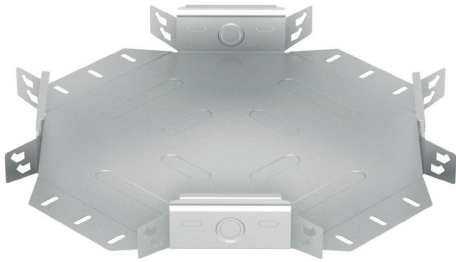


35-60-85-100 • 60-600				
	A	Ref	kg/u	u
<b>PG</b>	60	73023060	0,100	1
	100	73023100	0,161	1
	150	73023150	0,198	1
	200	73023200	0,236	1
	300	73023300	0,363	1
	400	73023400	0,451	1
	500	73023500	0,616	1
	600	73023600	0,716	1
<b>GC</b>	100	73033100	0,228	1
	150	73033150	0,280	1
	200	73033200	0,412	1
	300	73033300	0,545	1
	400	73033400	0,677	1
	500	73033500	0,809	1
<b>304</b>	600	73033600	0,941	1
	100	73053100	0,134	1
	150	73053150	0,165	1
	200	73053200	0,197	1
	300	73053300	0,259	1
	400	73053400	0,322	1
500	73053500	0,385	1	
600	73053600	0,448	1	



35-60-85-100 • 60-600				
	A	Ref	kg/u	u
<b>316L</b>	100	73063100	0,134	1
	150	73063150	0,165	1
	200	73063200	0,197	1
	300	73063300	0,259	1
	400	73063400	0,322	1
	500	73063500	0,385	1
600	73063600	0,448	1	

Kryds, CLICK



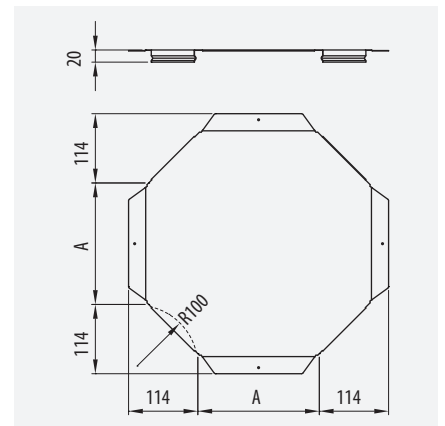
35-60-85-100 • 100-600					
	A	B	Ref	kg/u	u
<b>PG</b>	35	100	70024110	0,434	1
	35	150	70024115	0,630	1
	35	200	70024120	0,980	1
	35	300	70024130	1,777	1
	60	100	70024210	0,548	1
	60	150	70024215	0,735	1
	60	200	70024220	1,104	1
	60	300	70024230	1,918	1
	60	400	70024240	2,700	1
	60	500	70024250	3,608	1
	60	100	70024260	4,642	1
	85	200	70024320	1,228	1
	85	300	70024330	2,059	1
	85	400	70024340	2,841	1
	85	500	70024350	3,749	1
	85	600	70024360	4,783	1
	100	100	70024410	0,679	1
	100	200	70024420	1,247	1
100	300	70024430	1,807	1	
100	400	70024440	2,831	1	
100	500	70024450	3,722	1	
100	600	70024460	4,739	1	
<b>GC</b>	35	100	70034110	0,570	1
	35	150	70034115	0,826	1
	35	200	70034120	1,260	1
	35	300	70034130	2,000	1
	60	100	70034210	0,720	1
	60	150	70034215	0,965	1
	60	200	70034220	1,420	1
	60	300	70034230	2,159	1
	60	400	70034240	3,039	1
	60	500	70034250	4,061	1
	60	600	70034260	5,225	1

35-60-85-100 • 100-600					
	A	B	Ref	kg/u	u
<b>GC</b>	85	200	70034320	1,579	1
	85	300	70034330	2,318	1
	85	400	70034340	3,198	1
	85	500	70034350	4,220	1
	85	600	70034360	5,384	1
	100	100	70034410	0,907	1
	100	200	70034420	1,337	1
	100	300	70034430	1,937	1
	100	400	70034440	3,009	1
	100	500	70034450	3,957	1
	100	600	70034460	5,038	1
	<b>304</b>	60	100	70054210	0,431
60		150	70054215	0,583	1
60		200	70054220	0,753	1
60		300	70054230	1,153	1
60		400	70054240	1,631	1
60		500	70054250	2,189	1
<b>316L</b>	60	600	70054260	2,824	1
	60	100	70064210	0,431	1
	60	150	70064215	0,583	1
	60	200	70064220	0,753	1
	60	300	70064230	1,153	1
	60	400	70064240	1,631	1
60	500	70064250	2,189	1	
60	600	70064260	2,824	1	

Kryds låg, CLICK

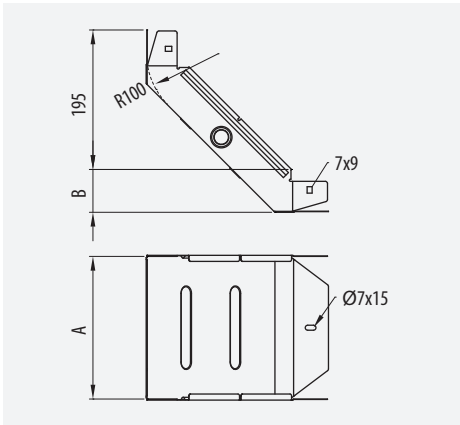


35-60-85-100 • 100-600				
	A	Ref	kg/u	u
<b>PG</b>	100	73024100	0,344	1
	150	73024150	0,511	1
	200	73024200	0,818	1
	300	73024300	1,537	1
	400	73024400	2,265	1
	500	73024500	3,119	1
<b>GC</b>	600	73024600	4,094	1
	100	73034100	0,452	1
	150	73034150	0,671	1
	200	73034200	1,052	1
	300	73034300	1,730	1
	400	73034400	2,550	1
<b>304</b>	500	73034500	3,511	1
	600	73034600	4,608	1
	100	73054100	0,287	1
	150	73054150	0,426	1
	200	73054200	0,584	1
	300	73054300	0,961	1
400	73054400	1,416	1	
500	73054500	1,949	1	
600	73054600	2,559	1	



35-60-85-100 • 100-600				
	A	Ref	kg/u	u
<b>316L</b>	100	73064100	0,287	1
	150	73064150	0,426	1
	200	73064200	0,584	1
	300	73064300	0,961	1
	400	73064400	1,416	1
	500	73064500	1,949	1
600	73064600	2,559	1	

Indvendig bøjning, CLICK



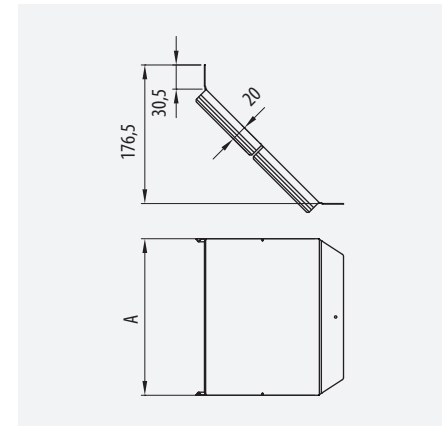
		35-60-85-100		60-600	
	A	B	Ref	kg/u	u
PG	35	100	70025110	0,248	1
	35	150	70025115	0,340	1
	35	200	70025120	0,561	1
	35	300	70025130	0,790	1
	60	60	70025206	0,276	1
	60	100	70025210	0,356	1
	60	150	70025215	0,452	1
	60	200	70025220	0,548	1
	60	300	70025230	0,862	1
	60	400	70025240	1,085	1
	60	500	70025250	1,495	1
	85	100	70025260	1,750	1
	85	200	70025320	0,796	1
	85	300	70025330	1,039	1
	85	400	70025340	1,281	1
	85	500	70025350	1,740	1
85	600	70025360	2,017	1	
HDC	100	100	70025410	0,472	1
	100	200	70025420	0,873	1
	100	300	70025430	1,121	1
	100	400	70025440	1,368	1
	100	500	70025450	1,846	1
	100	600	70025460	2,128	1
	35	100	70035110	0,331	1
	35	150	70035115	0,453	1
	35	200	70035120	0,641	1
	35	300	70035130	0,903	1

		35-60-85-100		60-600		
	A	B	Ref	kg/u	u	
HDC	60	100	70035210	0,468	1	
	60	150	70035215	0,593	1	
	60	200	70035220	0,822	1	
	60	300	70035230	1,109	1	
	60	400	70035240	1,396	1	
	60	500	70035250	1,683	1	
	60	600	70035260	1,970	1	
	85	200	70035320	1,024	1	
	85	300	70035330	1,336	1	
	85	400	70035340	1,648	1	
	85	500	70035350	1,959	1	
	85	600	70035360	2,271	1	
	304	100	100	70035410	0,630	1
		100	200	70035420	0,936	1
		100	300	70035430	1,201	1
		100	400	70035440	1,466	1
100		500	70035450	1,962	1	
100		600	70035460	2,262	1	
60		100	70055210	0,297	1	
60		150	70055215	0,377	1	
60		200	70055220	0,456	1	
60		300	70055230	0,616	1	
60		400	70055240	0,775	1	
60		500	70055250	0,934	1	
316L	60	600	70055260	1,094	1	
	60	100	70065210	0,297	1	
	60	150	70065215	0,377	1	
	60	200	70065220	0,456	1	
	60	300	70065230	0,616	1	
	60	400	70065240	0,775	1	
60	500	70065250	0,934	1		
60	600	70065260	1,094	1		

Indvendig bøjning - låg, CLICK

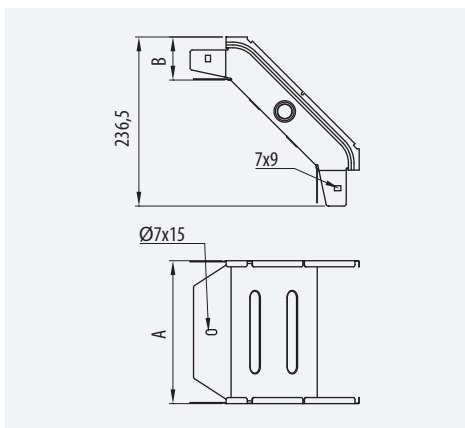


		35-60-85-100		60-600	
	A	Ref	kg/u	u	
PG	60	73025060	0,100	1	
	100	73025100	0,153	1	
	150	73025150	0,216	1	
	200	73025200	0,326	1	
	300	73025300	0,472	1	
	400	73025400	0,622	1	
	500	73025500	0,873	1	
	600	73025600	1,171	1	
HDC	100	73035100	0,201	1	
	150	73035150	0,284	1	
	200	73035200	0,419	1	
	300	73035300	0,608	1	
	400	73035400	0,800	1	
	500	73035500	0,983	1	
304	600	73035600	1,171	1	
	100	73055100	0,128	1	
	150	73055150	0,180	1	
	200	73055200	0,233	1	
	300	73055300	0,367	1	
	400	73055400	0,441	1	
500	73055500	0,546	1		
600	73055600	0,732	1		



		35-60-85-100		60-600	
	A	Ref	kg/u	u	
316L	100	73065100	0,128	1	
	150	73065150	0,180	1	
	200	73065200	0,233	1	
	300	73065300	0,367	1	
	400	73065400	0,441	1	
	500	73065500	0,546	1	
600	73065600	0,732	1		

Udvendig bøjning, CLICK



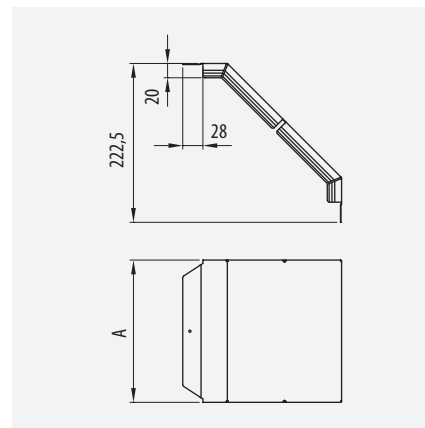
[ ] • [ ] 35-60-85-100 • [ ] 60-600					
	A	B	Ref	kg/u	u
<b>PG</b>	35	100	70026110	0,236	1
	35	150	70026115	0,310	1
	35	200	70026120	0,444	1
	35	300	70026130	0,694	1
	60	60	70026206	0,227	1
	60	100	70026210	0,287	1
	60	150	70026215	0,352	1
	60	200	70026220	0,486	1
	60	300	70026230	0,636	1
	60	400	70026240	0,786	1
	60	500	70026250	1,070	1
	60	100	70026260	1,242	1
	85	200	70026320	0,436	1
	85	300	70026330	0,639	1
	85	400	70026340	0,769	1
	85	500	70026350	0,900	1
85	600	70026360	1,177	1	
<b>HDC</b>	100	100	70026410	0,338	1
	100	200	70026420	0,509	1
	100	300	70026430	0,622	1
	100	400	70026440	0,728	1
	100	500	70026450	0,967	1
	100	600	70026460	1,095	1
	35	100	70036110	0,310	1
	35	150	70036115	0,407	1
	35	200	70036120	0,571	1
	35	300	70036130	0,781	1

[ ] • [ ] 35-60-85-100 • [ ] 60-600					
	A	B	Ref	kg/u	u
<b>HDC</b>	60	100	70036210	0,377	1
	60	150	70036215	0,468	1
	60	200	70036220	0,625	1
	60	300	70036230	0,818	1
	60	400	70036240	1,011	1
	60	500	70036250	1,205	1
	60	600	70036260	1,398	1
	85	200	70036320	0,654	1
	85	300	70036330	0,822	1
	85	400	70036340	0,988	1
	85	500	70036350	1,157	1
	85	600	70036360	1,325	1
	100	100	70036410	0,452	1
	100	200	70036420	0,546	1
	100	300	70036430	0,666	1
	100	400	70036440	0,781	1
100	500	70036450	1,028	1	
100	600	70036460	1,164	1	
<b>304</b>	60	100	70056210	0,239	1
	60	150	70056215	0,293	1
	60	200	70056220	0,347	1
	60	300	70056230	0,454	1
	60	400	70056240	0,561	1
	60	500	70056250	0,669	1
<b>316L</b>	60	600	70056260	0,776	1
	60	100	70066210	0,239	1
	60	150	70066215	0,293	1
	60	200	70066220	0,347	1
	60	300	70066230	0,454	1
	60	400	70066240	0,561	1
60	500	70066250	0,669	1	
60	600	70066260	0,776	1	

Udvendig bøjning - låg, CLICK

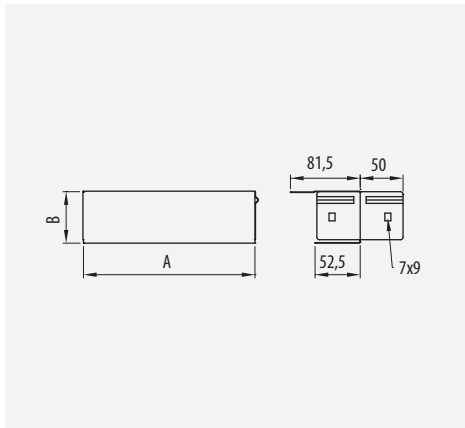
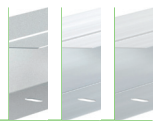
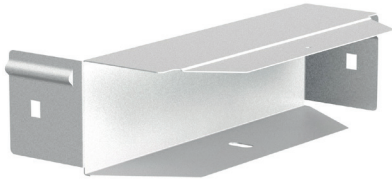


[ ] • [ ] 35-60-85-100 • [ ] 60-600				
	A	Ref	kg/u	u
<b>PG</b>	60	73026060	0,192	1
	100	73026100	0,204	1
	150	73026150	0,287	1
	200	73026200	0,431	1
	300	73026300	0,623	1
	400	73026400	0,816	1
<b>HDC</b>	500	73026500	1,152	1
	600	73026600	1,372	1
	100	73036100	0,268	1
	150	73036150	0,376	1
	200	73036200	0,554	1
	300	73036300	0,802	1
<b>304</b>	400	73036400	1,049	1
	500	73036500	1,297	1
	600	73036600	1,545	1
	100	73056100	0,170	1
	150	73056150	0,239	1
	200	73056200	0,308	1
<b>316L</b>	300	73056300	0,444	1
	400	73056400	0,583	1
	500	73056500	0,720	1
	600	73056600	0,858	1



[ ] • [ ] 35-60-85-100 • [ ] 60-600				
	A	Ref	kg/u	u
<b>316L</b>	100	73066100	0,170	1
	150	73066150	0,239	1
	200	73066200	0,308	1
	300	73066300	0,444	1
	400	73066400	0,583	1
	500	73066500	0,720	1
600	73066600	0,858	1	

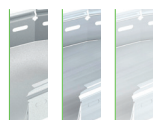
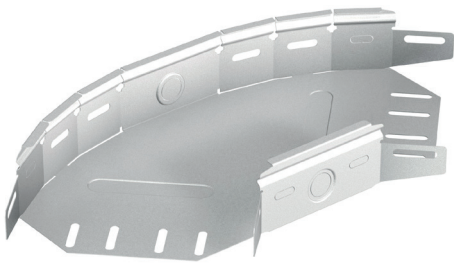
Reduktion



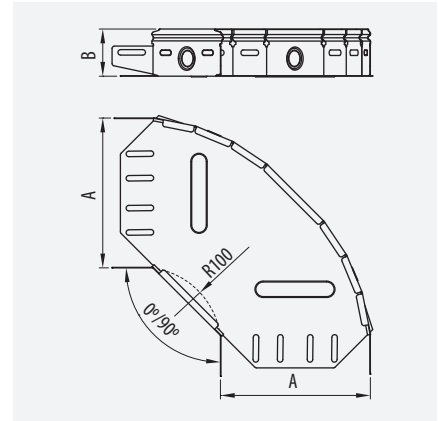
35-60-85-100 • 100-600					
	A	B	Ref	kg/u	u
<b>PG</b>	35	100	71021010	0,074	1
	35	150	71021015	0,109	1
	35	200	71021020	0,159	1
	35	300	71021030	0,237	1
	60	100	71022010	0,098	1
	60	150	71022015	0,138	1
	60	200	71022020	0,194	1
	60	300	71022030	0,285	1
	60	400	71022040	0,602	1
	60	500	71022050	0,746	1
	60	600	71022060	0,890	1
	85	100	71023010	0,292	1
	85	200	71023020	0,372	1
	85	300	71023030	0,536	1
	85	400	71023040	0,700	1
	85	500	71023050	0,864	1
	85	600	71023060	1,027	1
	<b>HDG</b>	100	100	71024010	0,223
100		200	71024020	0,408	1
100		300	71024030	0,583	1
100		400	71024040	0,759	1
100		500	71024050	0,934	1
100		600	71024060	1,110	1
35		100	71031010	0,092	1
35		150	71031015	0,136	1
35		200	71031020	0,199	1
35		300	71031030	0,297	1
60		100	71032010	0,122	1
60		150	71032015	0,173	1
60	200	71032020	0,243	1	
60	300	71032030	0,356	1	
60	400	71032040	0,632	1	
60	500	71032050	0,784	1	
60	600	71032060	0,935	1	

35-60-85-100 • 100-600					
	A	B	Ref	kg/u	u
<b>HDG</b>	85	200	71033020	0,392	1
	85	300	71033030	0,563	1
	85	400	71033040	0,735	1
	85	500	71033050	0,907	1
	85	600	71033060	1,079	1
	100	100	71034010	0,245	1
	100	200	71034020	0,429	1
	100	300	71034030	0,613	1
	100	400	71034040	0,797	1
	100	500	71034050	0,982	1
	100	600	71034060	1,166	1
	<b>304</b>	60	100	71052010	0,080
60		150	71052015	0,114	1
60		200	71052020	0,161	1
60		300	71052030	0,236	1
60		400	71052040	0,297	1
60		500	71052050	0,368	1
<b>316L</b>	60	600	71052060	0,439	1
	60	100	71062010	0,080	1
	60	150	71062015	0,114	1
	60	200	71062020	0,161	1
	60	300	71062030	0,236	1
	60	400	71062040	0,297	1
60	500	71062050	0,368	1	
60	600	71062060	0,439	1	

Bøjning - justerbar, CLICK

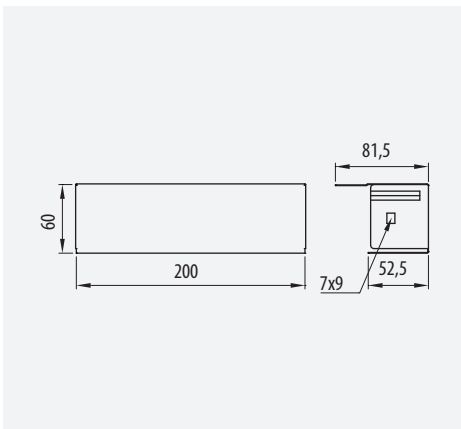
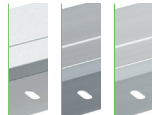
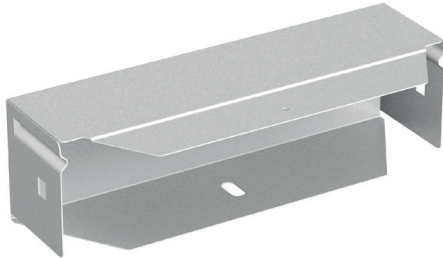


35-60 • 100-300					
	A	B	Ref	kg/u	u
<b>PG</b>	35	100	70028110	0,224	1
	35	150	70028115	0,361	1
	35	200	70028120	0,486	1
	35	300	70028130	0,849	1
	60	100	70028210	0,297	1
	60	150	70028215	0,448	1
	60	200	70028220	0,574	1
	60	300	70028230	0,965	1
	<b>HDG</b>	35	100	70038110	0,240
35		150	70038115	0,386	1
35		200	70038120	0,521	1
35		300	70038130	0,910	1
60		100	70038210	0,318	1
60		150	70038215	0,480	1
60		200	70038220	0,615	1
60		300	70038230	1,034	1
<b>304</b>		60	100	70058210	0,212
	60	150	70058215	0,320	1
	60	200	70058220	0,410	1
<b>316L</b>	60	300	70058230	0,500	1



35-60 • 100-300					
	A	B	Ref	kg/u	u
<b>316L</b>	60	100	70068210	0,212	1
	60	150	70068215	0,320	1
	60	200	70068220	0,410	1
	60	300	70068230	0,500	1

Endeafslutning

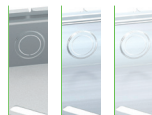
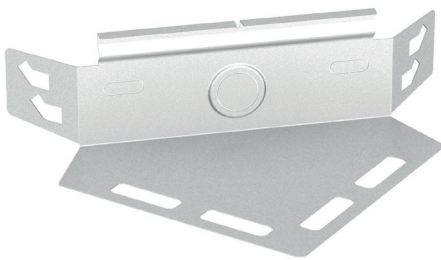


35-60-85-100 • 100-600					
	A	B	Ref	kg/u	u
<b>PG</b>	35	100	71021010	0,074	1
	35	150	71021015	0,109	1
	35	200	71021020	0,159	1
	35	300	71021030	0,237	1
	60	100	71022010	0,098	1
	60	150	71022015	0,138	1
	60	200	71022020	0,194	1
	60	300	71022030	0,285	1
	60	400	71022040	0,602	1
	60	500	71022050	0,746	1
	60	600	71022060	0,890	1
	85	100	71023010	0,292	1
	85	200	71023020	0,372	1
	85	300	71023030	0,536	1
	85	400	71023040	0,700	1
	85	500	71023050	0,864	1
	85	600	71023060	1,027	1
	100	100	71024010	0,223	1
	100	200	71024020	0,408	1
	100	300	71024030	0,583	1
100	400	71024040	0,759	1	
100	500	71024050	0,934	1	
100	600	71024060	1,110	1	

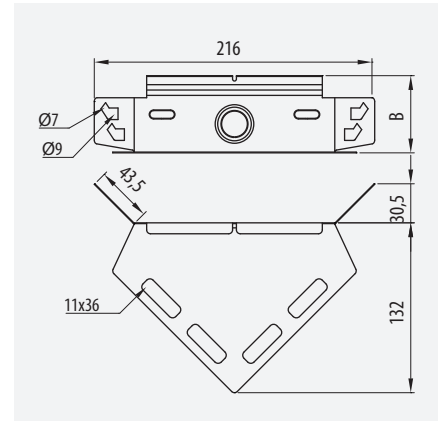


35-60-85-100 • 100-600					
	A	B	Ref	kg/u	u
<b>HDC</b>	35	100	70039110	0,092	1
	35	150	70039115	0,136	1
	35	200	70039120	0,199	1
	35	300	70039130	0,297	1
	60	100	70039210	0,122	1
	60	150	70039215	0,173	1
	60	200	70039220	0,243	1
	60	300	70039230	0,356	1
	60	400	70039240	0,632	1
	60	500	70039250	0,784	1
	60	600	70039260	0,935	1
	85	100	70039310	0,212	1
	85	200	70039320	0,392	1
	85	300	70039330	0,563	1
	85	400	70039340	0,735	1
	85	500	70039350	0,907	1
	85	600	70039360	1,079	1
	100	100	70039410	0,245	1
	100	200	70039420	0,429	1
	100	300	70039430	0,613	1
100	400	70039440	0,797	1	
100	500	70039450	0,982	1	
100	600	70039460	1,166	1	
<b>304</b>	60	100	71052010	0,080	1
	60	150	71052015	0,114	1
	60	200	71052020	0,161	1
	60	300	71052030	0,236	1
	60	400	71052040	0,297	1
	60	500	71052050	0,368	1
<b>316L</b>	60	600	71052060	0,439	1
	60	100	71062010	0,080	1
	60	150	71062015	0,114	1
	60	200	71062020	0,161	1
	60	300	71062030	0,236	1
	60	400	71062040	0,297	1
60	500	71062050	0,368	1	
60	600	71062060	0,439	1	

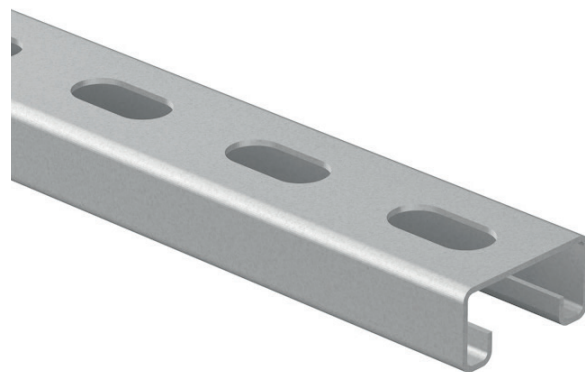
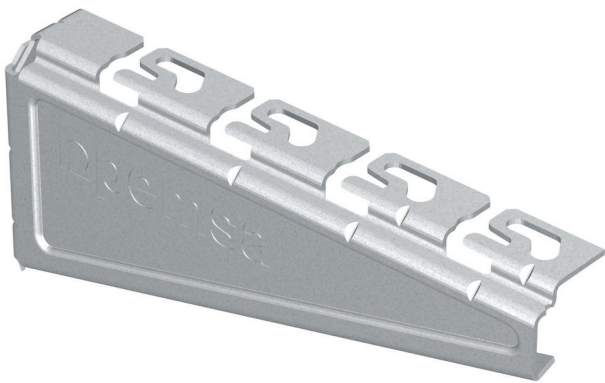
Hjørne, universal



35-60-85-100 • 100-600				
	A	Ref	kg/u	u
<b>PG</b>	35	70021100	0,106	1
	60	70021200	0,134	1
	85	70021300	0,165	1
	100	70021400	0,183	1
<b>HDC</b>	35	70031100	0,114	1
	60	70031200	0,144	1
	85	70031300	0,177	1
100	70031400	0,196	1	
<b>304</b>	60	70051200	0,096	1
<b>316L</b>	60	70061200	0,096	1



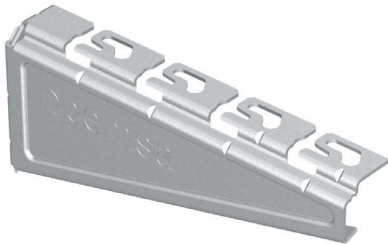
# OPHÆNGSSYSTEMER



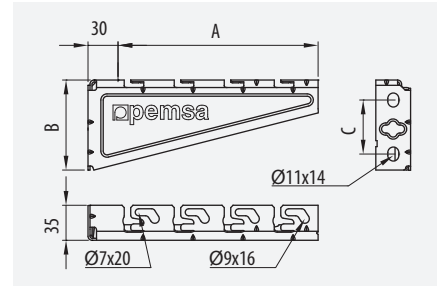


# KONSOLLER MM.

## Vægkonsol medium RPLUS



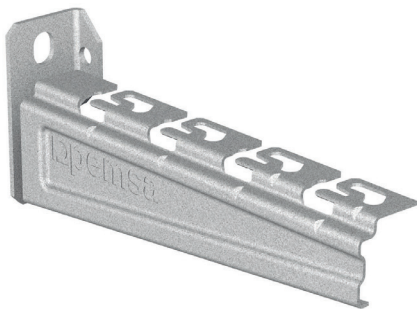
		100-600					
	A	B	C	Ref	kg/u	u	
<b>PG</b>	100	90	54	62025103	0,178	4	
	150	90	54	62025153	0,237	4	
	200	90	54	62025203	0,384	4	
	300	90	54	62025303	0,536	4	
	400	126	92	62025403	0,765	4	
	500	126	92	62025503	0,934	4	
	600	126	92	62025603	1,097	4	



↓ CTA ↓ (kg)	A	kg
	100	210
	150	170
	200	180
	300	140
	400	180
	500	90
	600	120

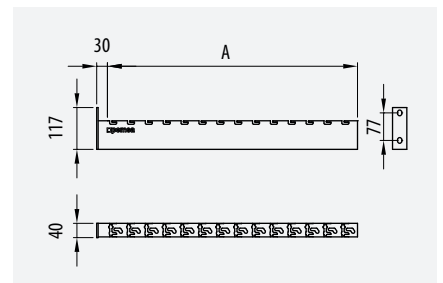
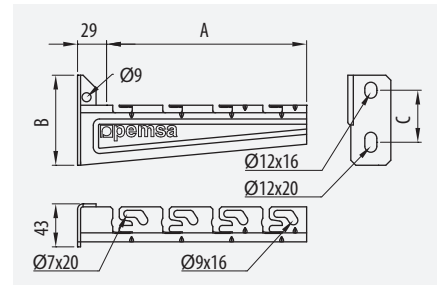


## Vægkonsol medium RPLUS

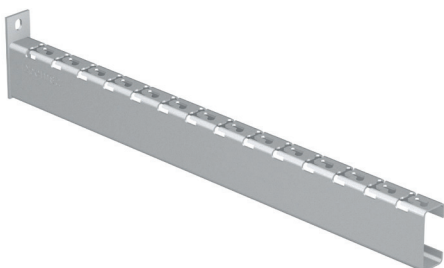


Click System er ikke disponibelt i 304 og 316L

		100-1000					
	A	B	C	Ref	kg/u	u	
<b>HDC</b>	100	90	52	62035103	0,232	4	
	150	90	52	62035153	0,288	4	
	200	90	52	62035203	0,331	4	
	300	90	52	62035303	0,425	4	
	400	117	79	62035403	0,778	4	
	500	117	79	62035503	0,928	4	
	600	117	79	62035603	1,074	4	
	700	117	77	62035703	2,449	4	
	750	117	77	62035753	2,611	4	
	800	117	77	62035803	2,765	4	
<b>304</b>	900	117	77	62035903	3,082	4	
	1000	117	77	62035993	3,398	4	
	100	90	52	62055103	0,197	4	
	150	90	52	62055153	0,246	4	
	200	90	52	62055203	0,292	4	
	300	90	52	62055303	0,386	4	
<b>316L</b>	400	117	79	62055403	0,721	4	
	500	117	79	62055503	0,866	4	
	600	117	79	62055603	1,011	4	
	100	90	52	62065103	0,197	4	
	150	90	52	62065153	0,246	4	
	200	90	52	62065203	0,292	4	
300	90	52	62065303	0,386	4		
400	117	79	62065403	0,721	4		
500	117	79	62065503	0,866	4		
600	117	79	62065603	1,011	4		



↓ CTA ↓ (kg)	A	kg
<b>CC / C8</b>	100	225
	150	245
	200	190
	300	110
	400	245
	500	92
	600	110
	700	220
	750	220
	800	220
<b>304 / 316 L</b>	900	220
	1000	220
	100	160
	150	190
	200	190
	300	130
400	150	
500	110	
600	95	

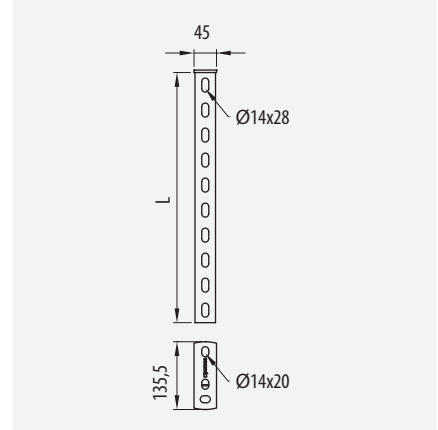


# KONSOLLER MM.

Loftpendel, kraftig



	L	Ref	kg/u	u
<b>HDC</b>	500	67030660	1,455	1
	1000	67030661	2,356	1

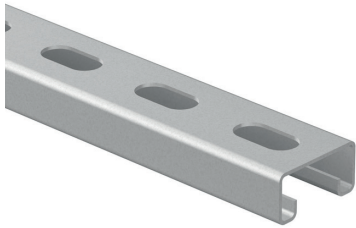



↓ CTA ↓ (kg)		kg	Mf1 kg.m	Mf2 kg.m
 Mf1	500	350	36	43
	1000	350	36	43

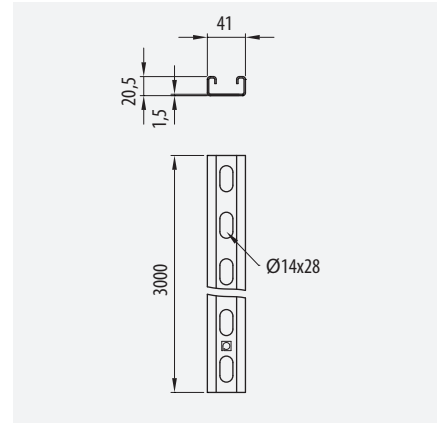


# KONSOLLER MM.

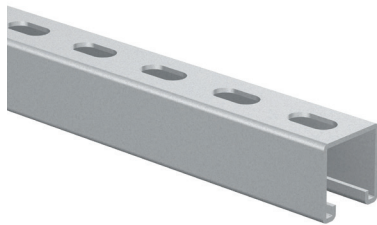
Ankerskinne, let (41 x 21)




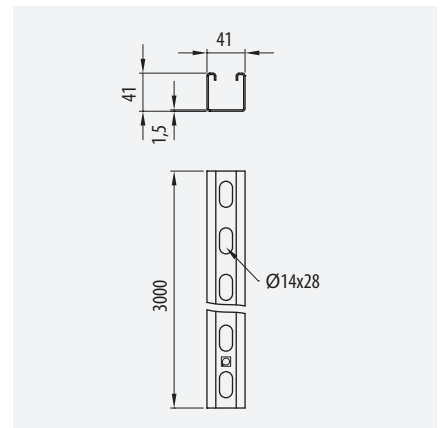
	e	Ref	kg/m	
<b>PG</b>	1,5	67030075	1,211	3



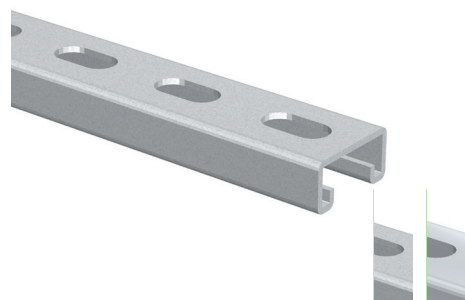
Ankerskinne, let (41x41)




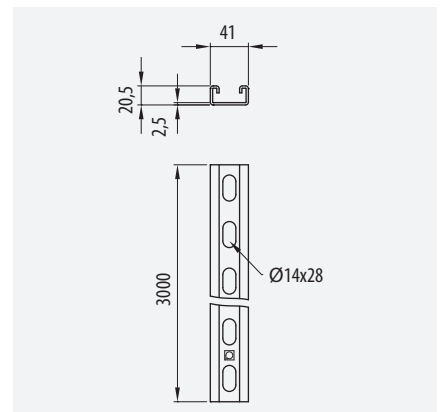
	e	Ref	kg/m	
<b>PG</b>	1,5	67030074	1,681	3



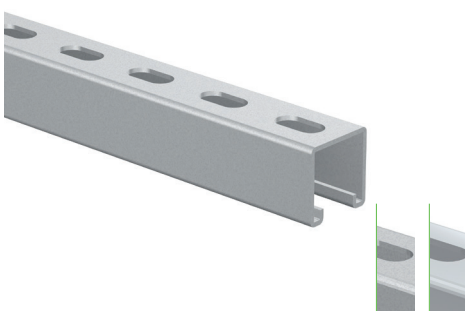
Ankerskinne (41x21)




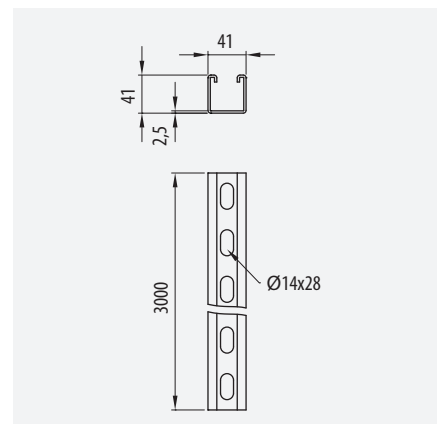
	e	Ref	kg/m	
<b>PG</b>	2,5	67030052	1,901	3
<b>HDG</b>	2,5	67030055	1,803	3
<b>316L</b>	2,5	67060055	1,735	3



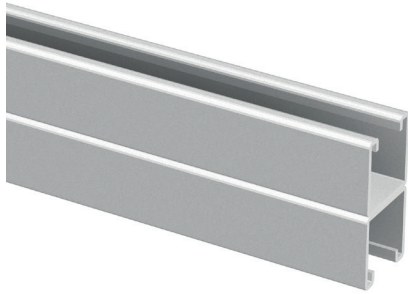
Ankerskinne (41x41)



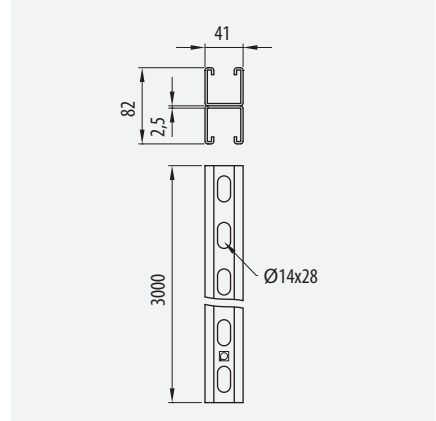
	e	Ref	kg/m	
<b>PG</b>	2,5	67030053	2,561	3
<b>HDG</b>	2,5	67030057	2,561	3
<b>316L</b>	2,5	67060057	2,541	3



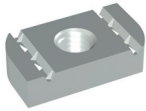
## Ankerskinne, dobbelt



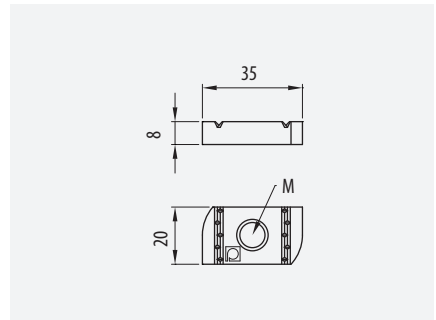
	e	Ref	kg/m	m
<b>HDC</b>	2,5	67030157	5,292	3



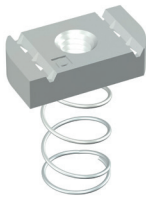
## Glidemøtrik



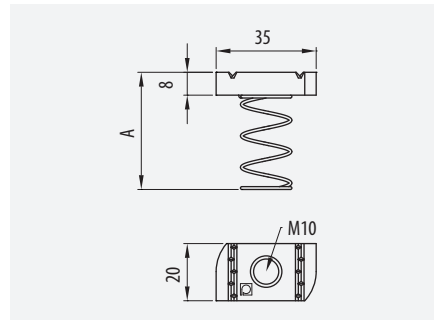
• 41x21 • 41x41				
	M	Ref	kg/u	u
<b>EZ</b>	M8	67010056	0,031	100
	M6	67020055	0,031	100
<b>HDC</b>	M8	67030056	0,031	100
<b>316L</b>	M8	67060056	0,031	100
	M10	67060058	0,031	100



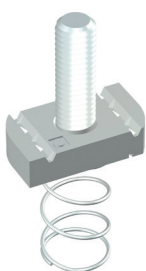
## Glidemøtrik m/ fjeder



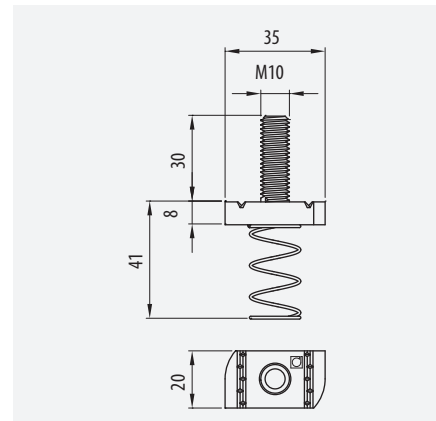
• 41x21 • 41x41				
	A	Ref	kg/u	u
<b>EZ</b>	21	67020058	0,031	100
	41	67020158	0,031	100
<b>HDC</b>	21	67030058	0,031	100
	41	67030158	0,031	100



## Glidebolt m/ fjeder



• 41x41			
	Ref	kg/u	u
<b>HDC</b>	67020159	0,023	100

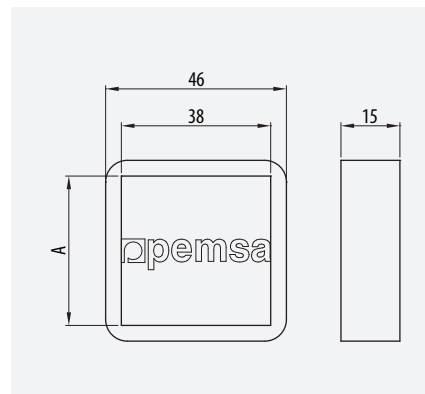


## Endeproop ankerskinne

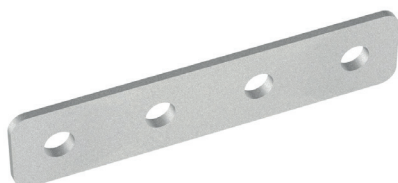


• 41x21 • 41x41			
A	Ref	kg/u	u
41	68000074	0,021	50
21	68000075	0,021	100

162 M0B

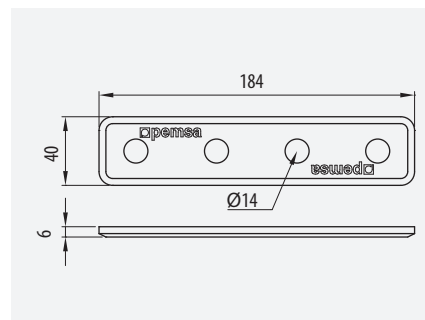


## Samling, let - nr. 1



• 41x21 • 41x41			
GC	Ref	kg/u	u
	67030205	0,241	1

162 M01

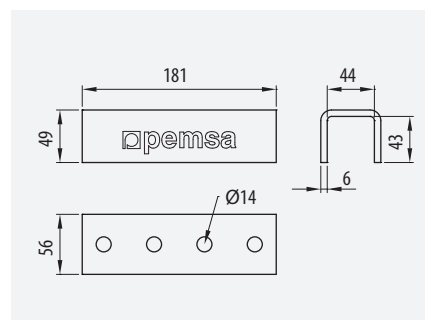


## Samling - nr. 2



• 41x41 • 41x82			
GC	Ref	kg/u	u
	67030214	0,291	1

162 M02

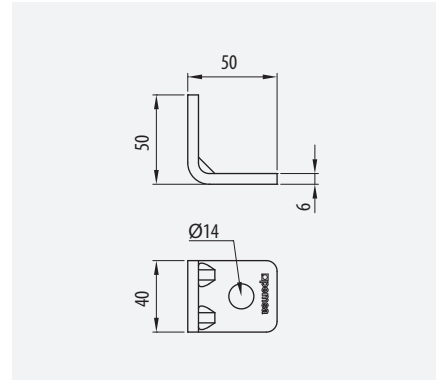


Vinkel 90°, 2-hals - nr. 3



• 41x21 • 41x41			
	Ref	kg/u	u
<b>HDC</b>	67030201	0,151	1

162 M03

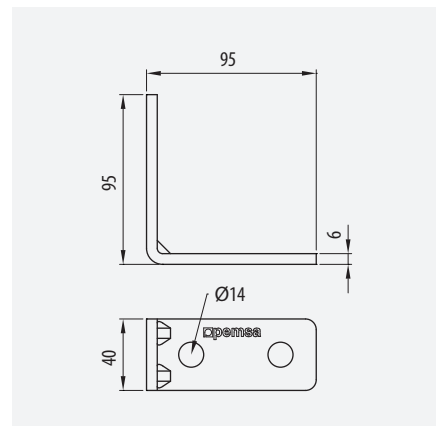


Vinkel 90°, 4-hals - nr. 4



• 41x21 • 41x41 • 41x82			
	Ref	kg/u	u
<b>HDC</b>	67030202	0,321	1

162 M04

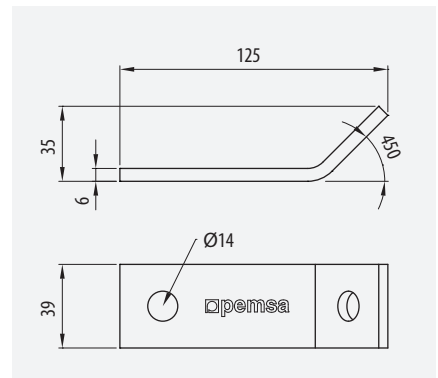


Vinkel 45°, udvendig - nr. 5



• 41x21 • 41x41			
	Ref	kg/u	u
<b>HDC</b>	67030210	0,291	1

162 M05

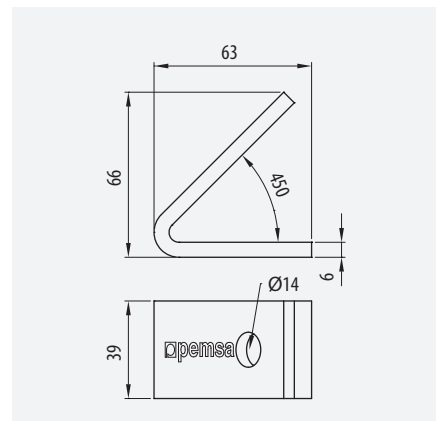


Vinkel 45°, indvendig - nr. 6

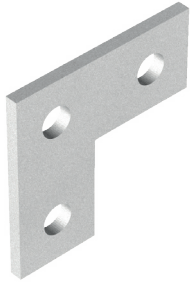


• 41x21 • 41x41			
	Ref	kg/u	u
<b>HDC</b>	67030209	0,151	1

163 M06

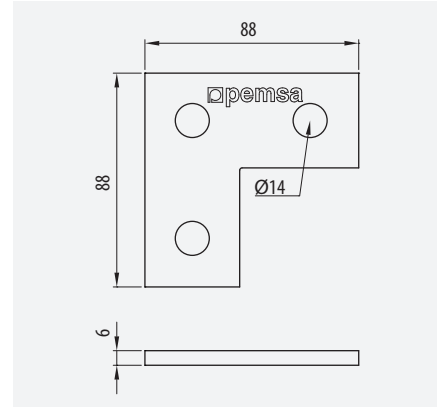


Vinkel, L-form - nr. 7



• 41x21 • 41x41			
	Ref	kg/u	u
<b>HDC</b>	67030211	0,291	1

163 M07

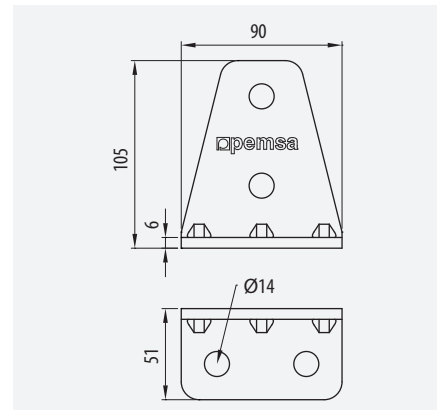


T-beslag 90° - nr. 8



• 41x21 • 41x41 • 41x82			
	Ref	kg/u	u
<b>HDC</b>	67030204	0,451	1

163 M08

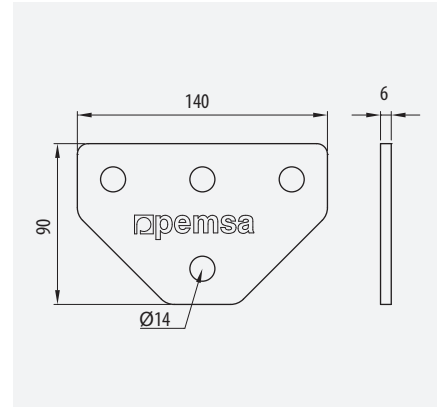


T-beslag, flad - nr. 9

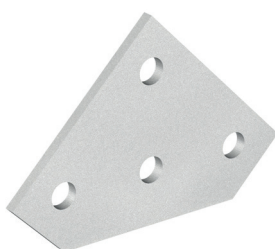


• 41x21 • 41x41			
	Ref	kg/u	u
<b>HDC</b>	67030203	0,311	1

163 M09

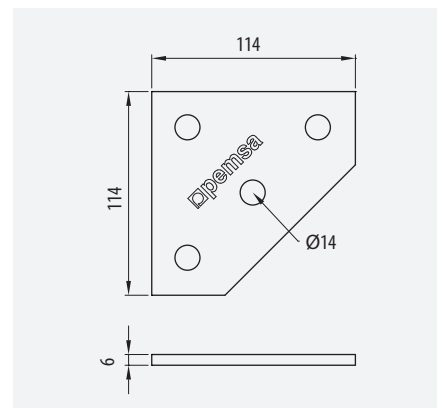


Beslag, 3-vejs - nr. 10



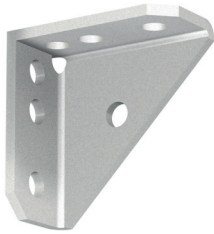
• 41x21 • 41x41			
	Ref	kg/u	u
<b>HDC</b>	67030212	0,291	1

163 M10

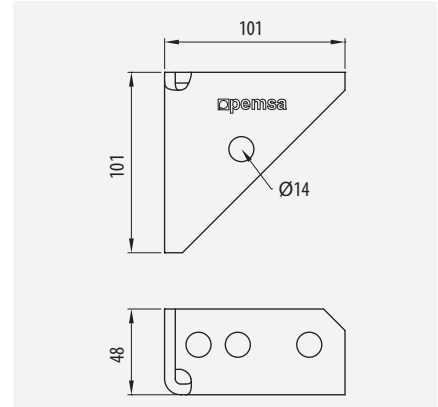


Vinkel, forstærket - nr. 11

• 41x21 • 41x41 • 41x82			
	Ref	kg/u	u
<b>HDC</b>	67030213	0,291	1

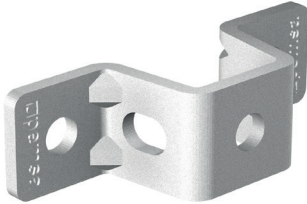


163 M11

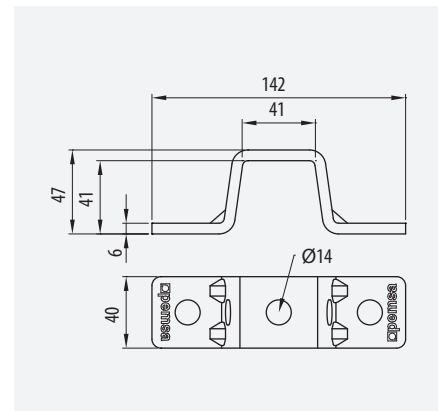


Klemme - nr. 12

• 41x41			
	Ref	kg/u	u
<b>HDC</b>	67030207	0,336	1

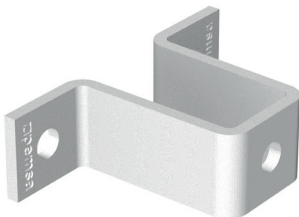


163 M12

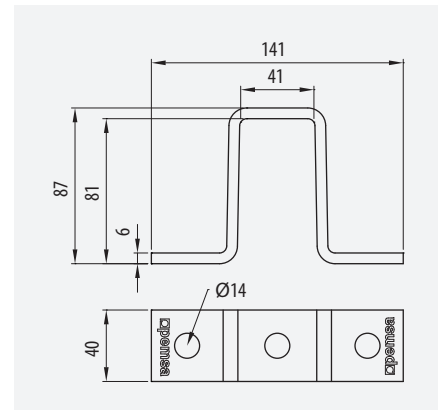


Klemme - nr. 13

• 41x82			
	Ref	kg/u	u
<b>HDC</b>	67030208	0,151	1

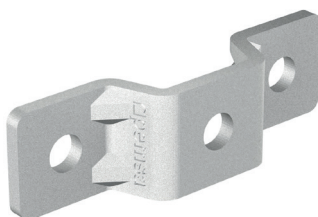


163 M13

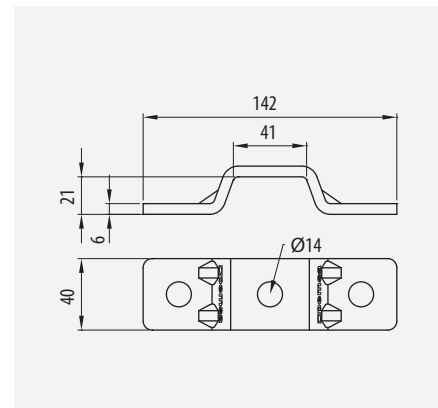


Klemme - nr. 14

• 41x21			
	Ref	kg/u	u
<b>HDC</b>	67030206	0,284	1




164 M14

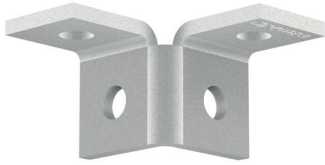




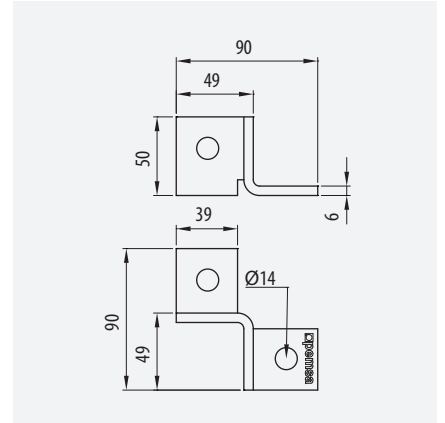
# KONSOLLER MM.

Beslag, dobbelt - nr. 15


• 41x21 • 41x41			
	Ref	kg/u	 u
<b>HDC</b>	67030215	0,291	1

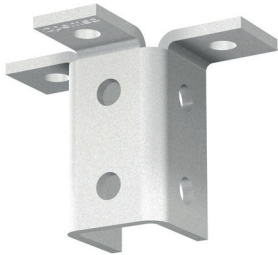


  164 M15

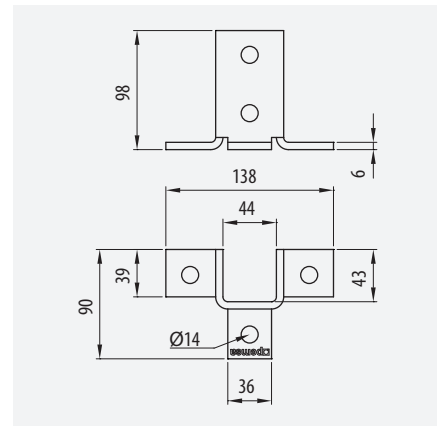


T-stykke 90°


• 41x21 • 41x41			
	Ref	kg/u	 u
<b>HDC</b>	67030216	0,291	1

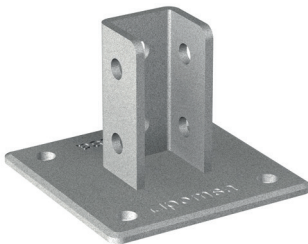




  164 M16

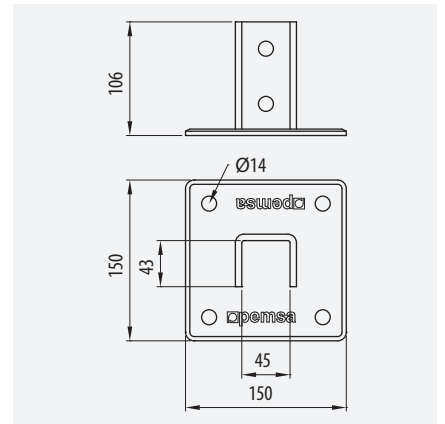


Gulv-/loftbeslag


• 41x21 • 41x41			
	Ref	kg/u	 u
<b>HDC</b>	67030064	1,451	1

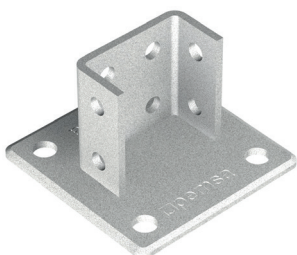


  164 M17

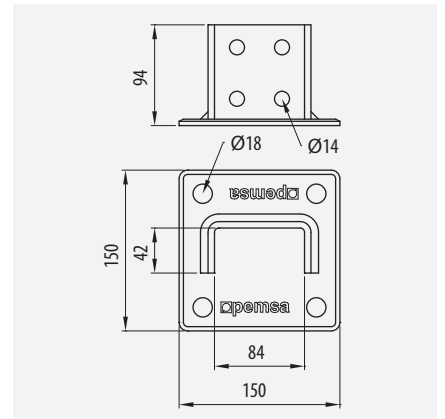


Gulv-/loftbeslag

• 41x21 • 41x82			
	Ref	kg/u	 u
<b>HDC</b>	67030164	2,901	1

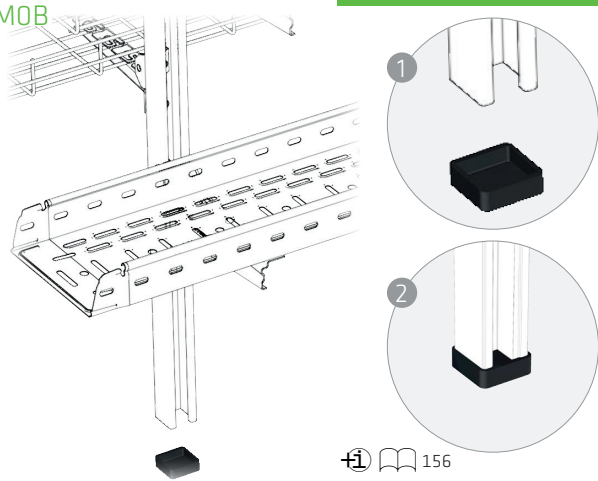


  164 M18



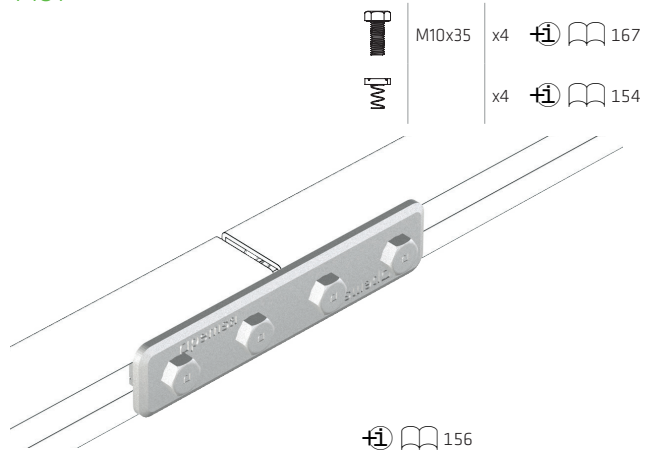
# KONSOLLER MM.

M0B



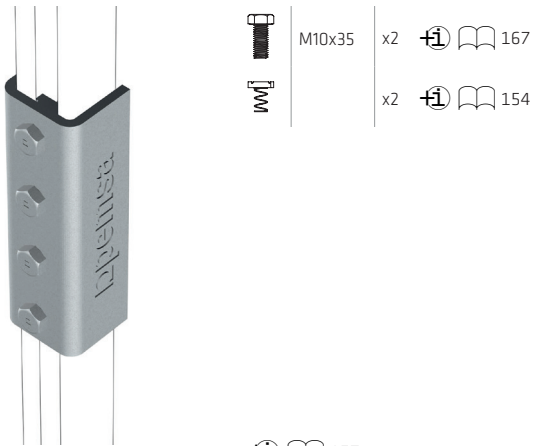
± 156

M01



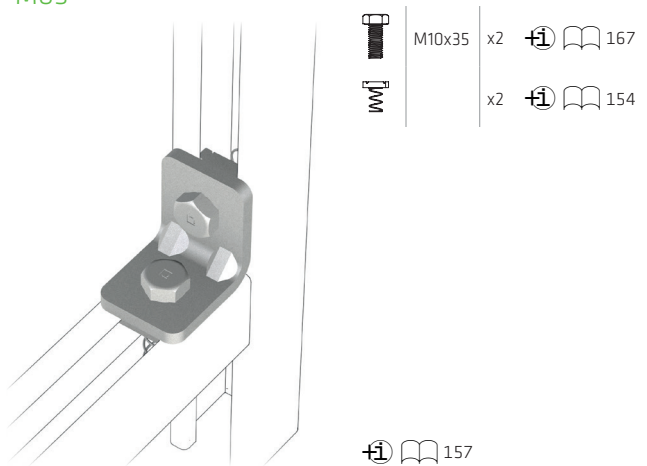
± 156

M02



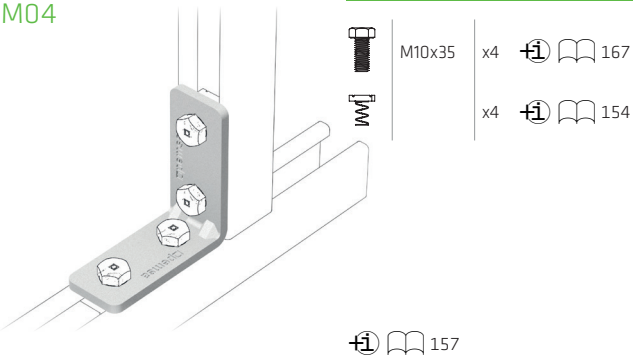
± 157

M03



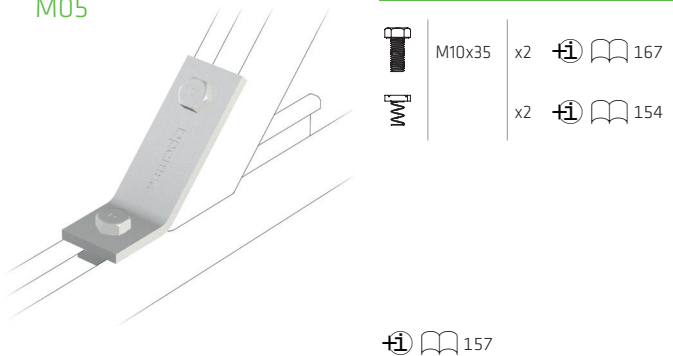
± 157

M04



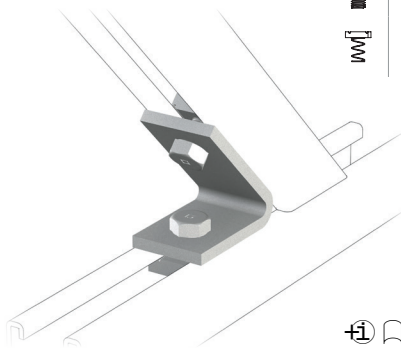
± 157

M05



± 157

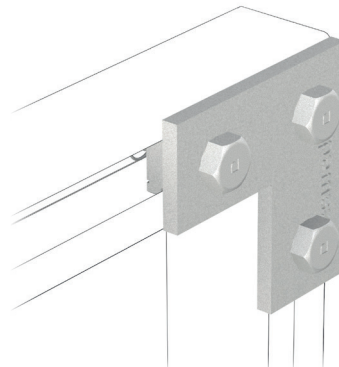
## M06



	M10x35	x2		167
		x2		154

157

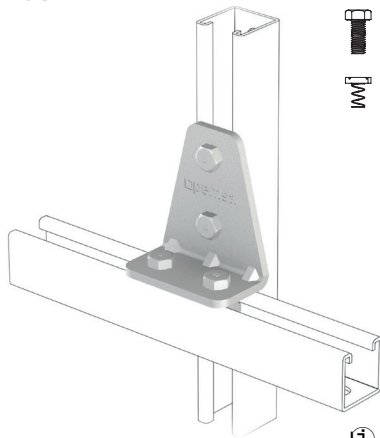
## M07



	M10x35	x3		167
		x3		154

158

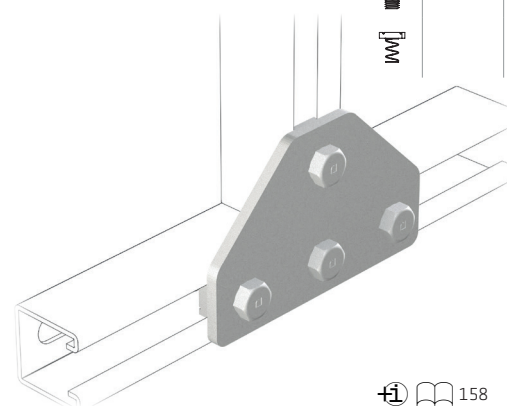
## M08



	M10x35	x4		167
		x4		154

158

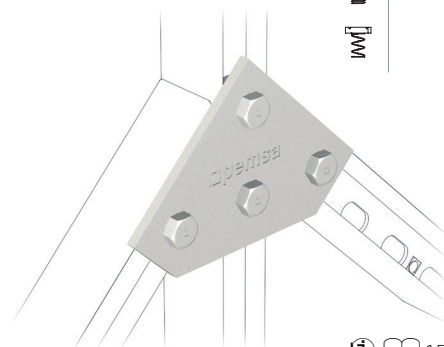
## M09



	M10x35	x4		167
		x4		154

158

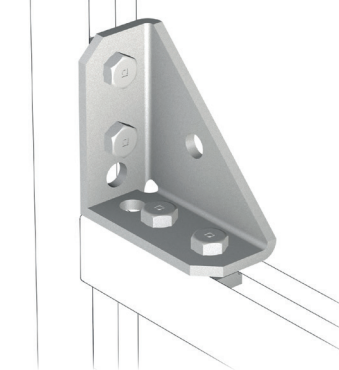
## M10



	M10x35	x4		167
		x4		154

158

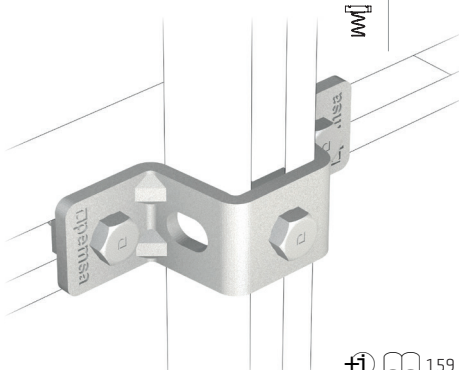
## M11



	M10x35	x4		167
		x4		154

159

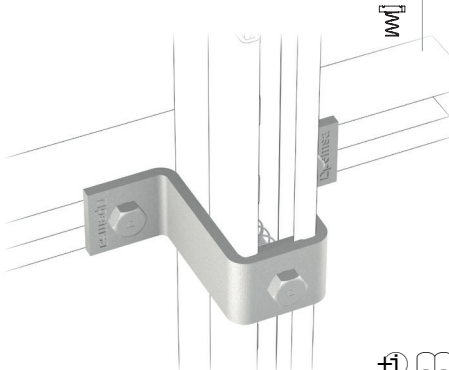
## M12



	M10x35	x3		167
		x3		154

159

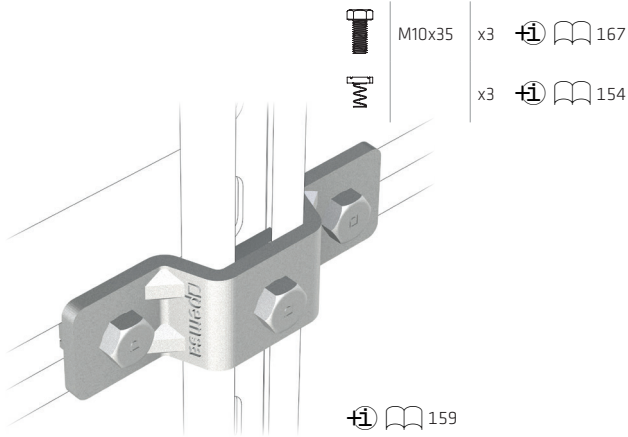
## M13



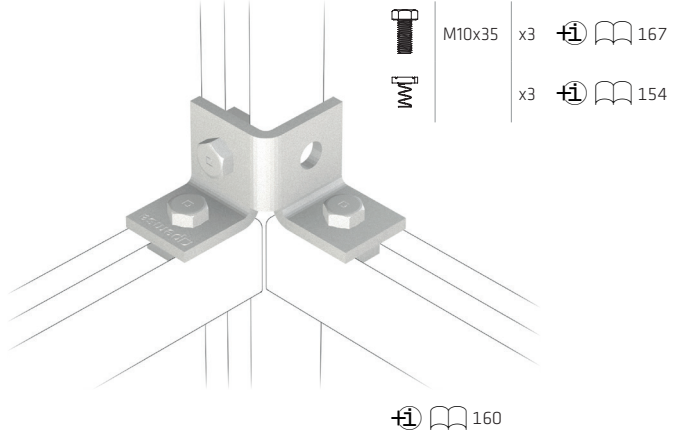
	M10x35	x3		167
		x3		154

159

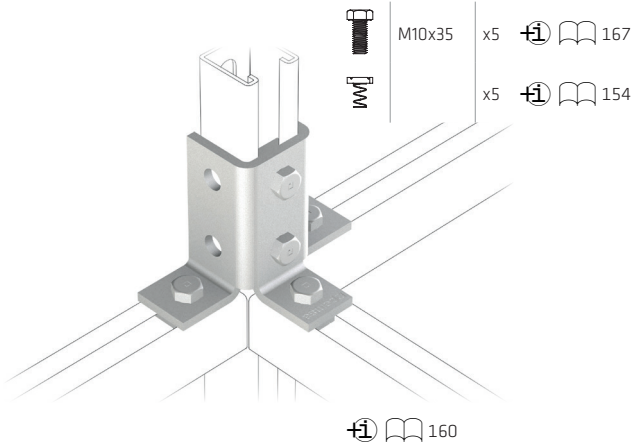
M14



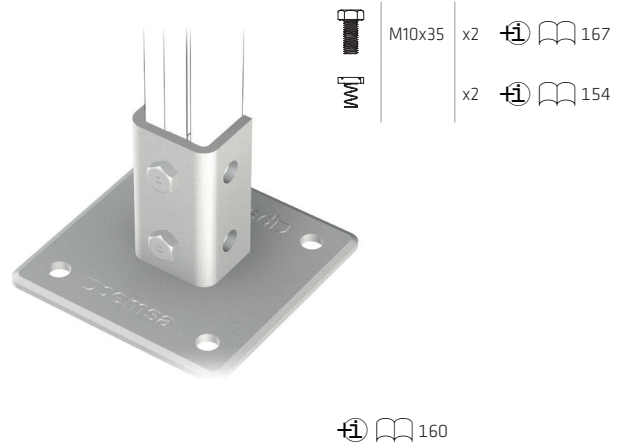
M15



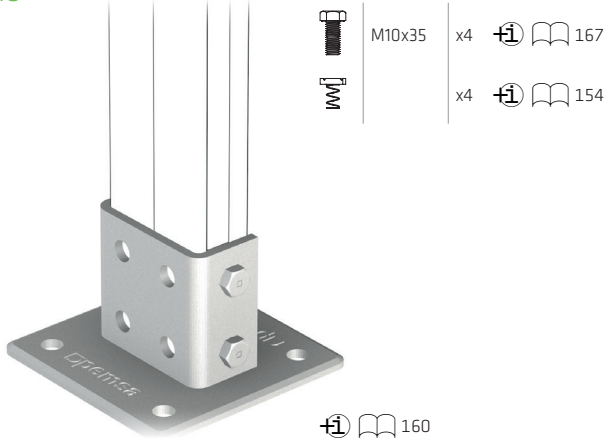
M16



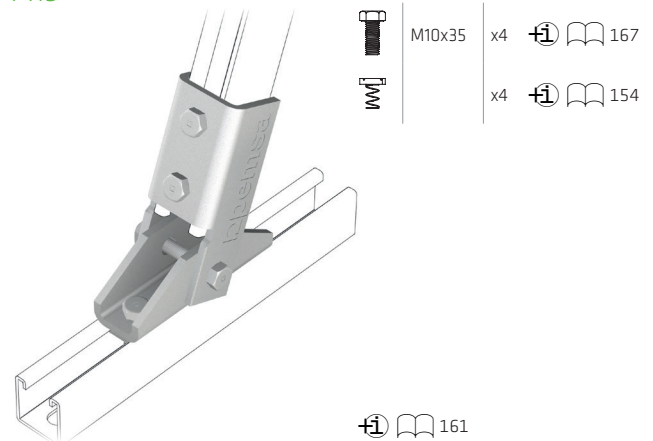
M17



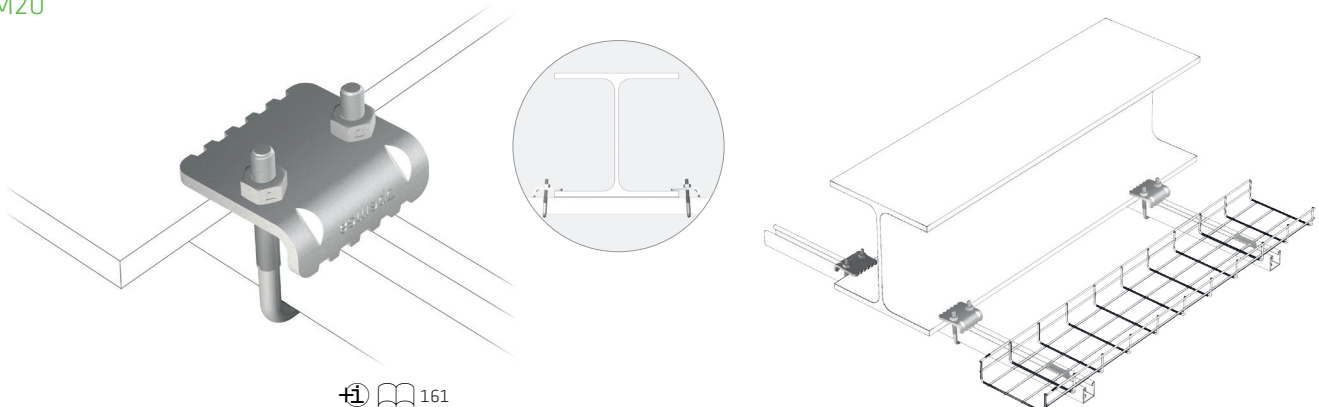
M18



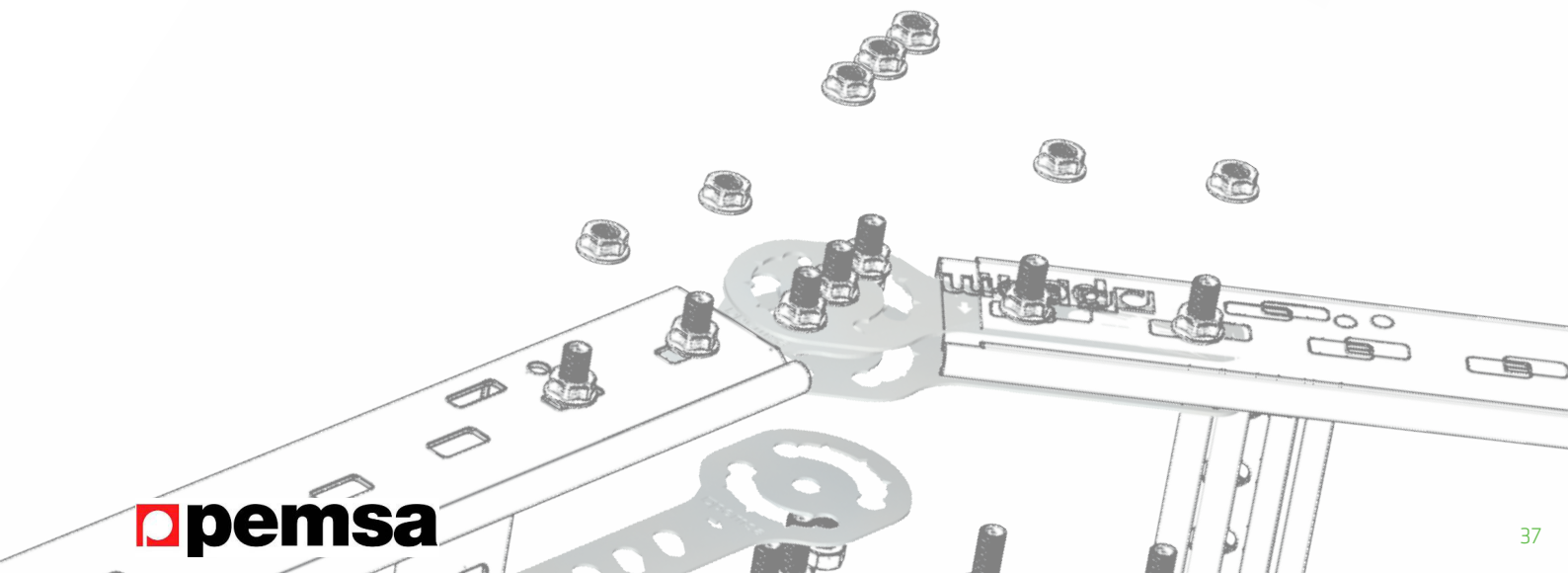
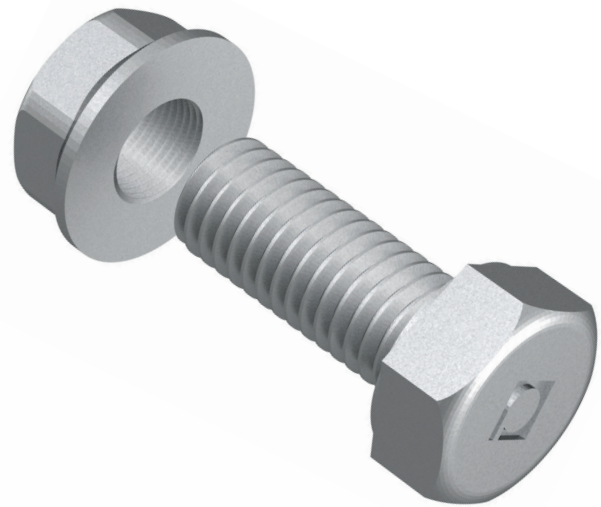
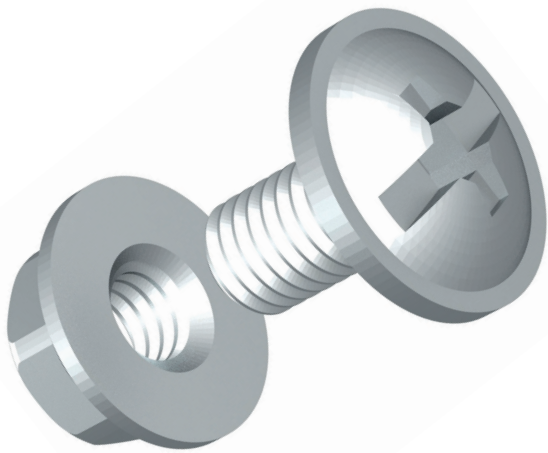
M19



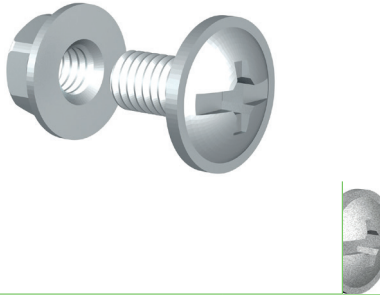
M20



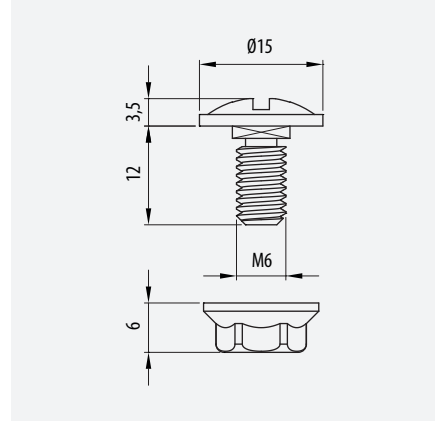
# BOLTE & MØTRIKKER



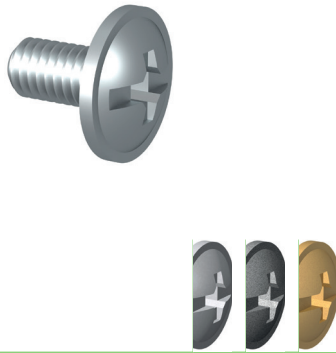
## Boltsæt, kabelbakke



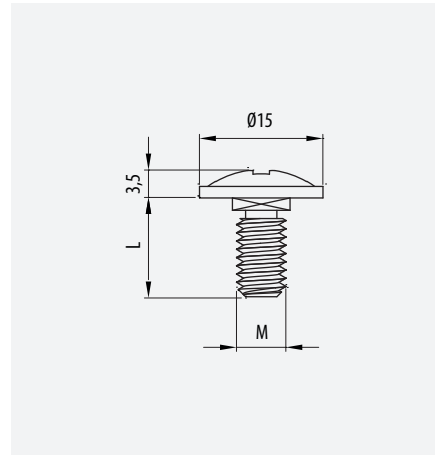
• 35-60-85-100 • 60-600				
	M	Ref	kg/u	u
<b>EZ</b>	M6	67010093	0,008	100
<b>HDG</b>	M6	67030093	0,009	100



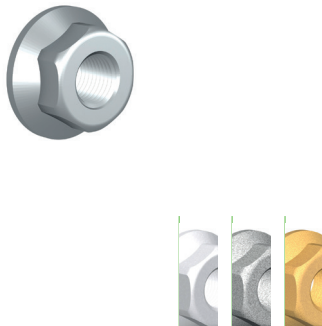
## Skrue, panhoved



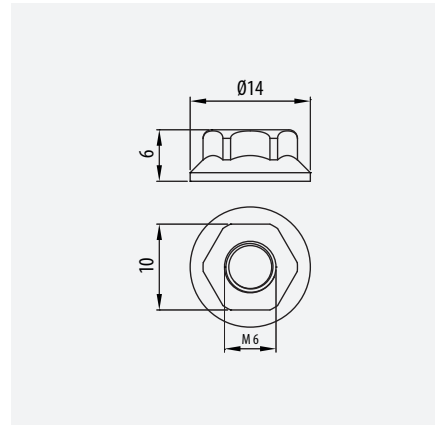
• 35-60-85-100 • 60-600				
	M	Ref	kg/m	u
<b>EZ</b>	M6x12	67010099	0,005	100
	M6x20	67010100	0,007	100
<b>BC</b>	M6x20	67020100	0,007	100
	M6x12	67030099	0,006	100
	M6x20	67030100	0,007	100
<b>HDG</b>	M6x30	67030109	0,006	100
	M6x12	67060099	0,007	100
<b>316L</b>	M6x20	67060100	0,007	100



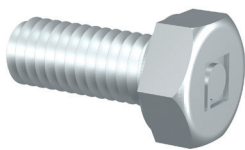
## Flange-møtrik



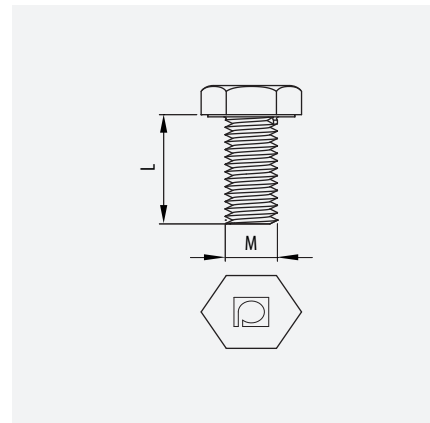
• 35-60-85-100 • 60-600				
	M	Ref	kg/m	u
<b>EZ</b>	M6	64010059	0,003	50
<b>BC</b>	M6	64020059	0,003	50
<b>HDG</b>	M6	64030059	0,003	50
<b>316L</b>	M6	64060059	0,003	50



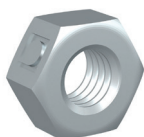
## Maskinbolt, sekskant



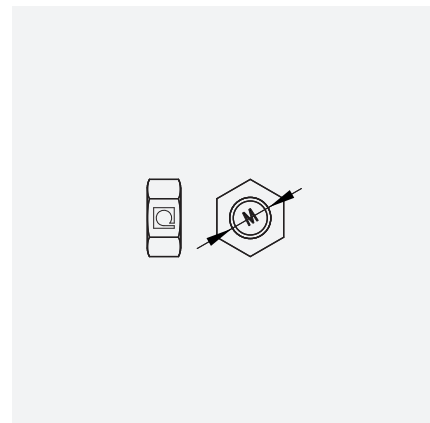
		60-85-100-120 • 100-1000		
	M	Ref	kg/m	U
<b>EZ</b>	M8x20	67010065	0,014	100
	M8x35	67010066	0,020	100
	M8x15	67010068	0,013	100
	M10x60	67020010	0,042	100
	M6x15	67020054	0,008	100
	M10x20	67020059	0,023	100
	M10x35	67020077	0,029	100
<b>HDG</b>	M8x65	67020092	0,040	100
	M10x60	67030010	0,042	100
	M10x20	67030059	0,023	100
	M8x20	67030065	0,014	100
	M8x35	67030066	0,020	100
<b>316L</b>	M8x15	67030068	0,007	100
	M10x35	67030077	0,029	100
	M10x60	67060010	0,042	100
	M10x20	67060059	0,023	100
	M8x20	67060065	0,014	100
	M8x35	67060066	0,020	100
	M10x35	67060077	0,029	100



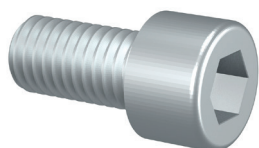
## Møtrik



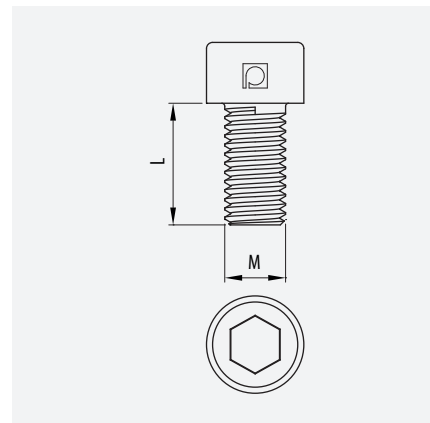
		60-85-100-120 • 100-1000		
	M	Ref	kg/m	U
<b>BC</b>	M10	67020014	0,008	100
	M8	67020062	0,005	100
<b>EZ</b>	M10	67020079	0,008	100
	M8	67020095	0,005	100
<b>HDG</b>	M10	67030014	0,008	100
	M8	67030062	0,005	100
<b>316L</b>	M10	67060014	0,008	100
	M8	67060062	0,005	100



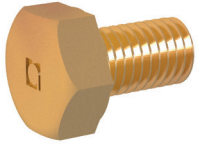
## Maskinbolt, unbrako




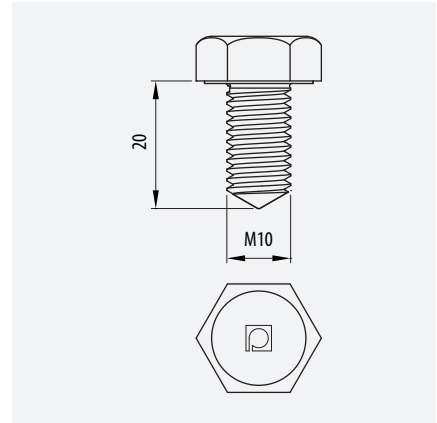
	M	Ref	kg/m	U
<b>EZ</b>	M10x20	67020065	0,030	50
	M10x35	67020097	0,029	50



## Bolt




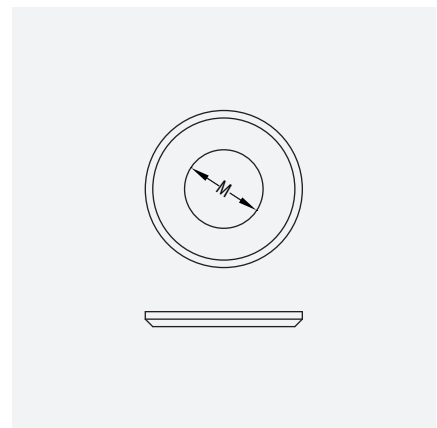
	M	Ref	kg/m	
<b>BC</b>	M10x20	67020098	0,023	10



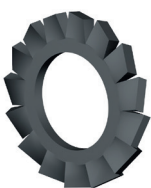
## Skive




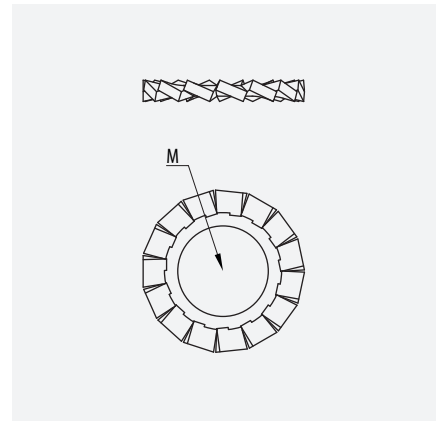
	M	Ref	kg/m	
<b>BC</b>	M10	67020013	0,004	100
	M8	67020063	0,002	100
<b>EZ</b>	M10	67020061	0,002	100
	M8	67020083	0,002	100
<b>HDC</b>	M10	67030013	0,002	100
	M8	67030063	0,002	100
<b>316L</b>	M10	67060064	0,002	100
	M8	67060063	0,002	100



## Tandskive



	M	Ref	kg/m	
<b>PASSV</b>	M8	67020084	0,001	100
	M10	67020086	0,001	100
	M10	67060086	0,001	100





# BLACK C8

- et bedre, billigere og mere æstetisk alternativ til varmgalvaniserede gitterbakker



# Flere kataloger i serien af føringsveje



---

Løsninger til mange forskellige brancher

---



**Fødevarer**

Bagerier, bryggerier,  
mejerier og slagterier



**Kemi / Pharma**

Medicinalindustrien,  
laboratorier,  
kemi- og rensningsanlæg



**Petro**

Raffinaderier



**Energi**

Kraftvarmeværker,  
vandværker og vindmøller



**Solceller**

Solcelleparker / anlæg



**Data**

Datacentre og  
IT-installationer



**Byggeri**

Shoppingcentre, hospitaler,  
stationer, lufthavne,  
kontorer og parkeringsanlæg



**Tunnel / Jernbane**

Vejanlæg, undergrund,  
tog- og metroanlæg



**Marine**

Skibe, boreplatforme  
og havvindmøller



---

**SCANKAB SYSTEMS A/S DANMARK - CABLE MANAGEMENT SYSTEMS**

Malervænget 3  
DK-5560 Aarup  
Tlf. +45 6343 1545  
[www.scankabsystems.dk](http://www.scankabsystems.dk)

**SCANKAB SYSTEMS A/S NORGE - CABLE MANAGEMENT SYSTEMS**

Orstadvægen 130  
NO-4353 Klepp Stasjon  
Tlf. +47 416 32 619  
[www.scankabsystems.no](http://www.scankabsystems.no)