

Power distribution for IT equipment

Basic  
In-Line Metered  
Metered Input

Metered Outlet  
Switched  
Managed



# ePDU

## G3 Platform



*Powering Business Worldwide*

# Eaton's 3rd generation power distribution technology

The ePDU G3 platform is designed to provide reliable, cost effective power distribution together with highly accurate monitoring and control for IT equipment in the datacentre.

## This Industry-leading platform enables you to:

- Reliably distribute power to your IT equipment
- Accurately meter and control power consumption
- See where you have available power and are most efficient
- Choose the level of metering to provide the level of information that you require
- Choose equipment switching to allow remote data centre control

## How do I reduce cooling costs by taking advantage of modern hot-air containment solutions and the newest IT technologies to get higher rack operating temperatures?

**60° Operating Temperature:** ePDU G3 can be used in very hot environments. Take full advantage of ASHRAE guidelines.

- ePDU G3 operates in extreme environments and containment solutions
- Allows for: containment solutions, free cooling scenarios and operating IT equipment with high temperature thresholds
- Plus optional environmental monitoring with dry contacts with configurable alarms for additional sensors

## How can I learn what my IT equipment is consuming so I can optimize my Data Centre, control my costs and utilize all my available power?

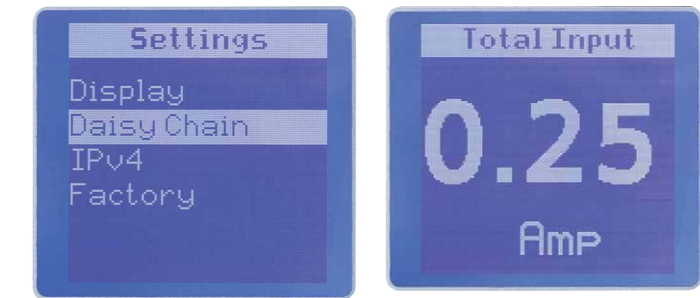
**Equipment Metering:** Meter individual outlets or group outlets to meter equipment with multiple inputs, over multiple ePDUs for A and B feed. Clearly see capacity exactly what your equipment is consuming.

## How can I operate remotely with lights-out control, including remote re-booting, scheduled shut downs and restarts?

**Equipment Switching:** Switch individual outlets or group to switch equipment with multiple inputs, over multiple ePDUs for A and B feed, including sequencing and scheduled shut-down and restart. Supports Graceful Shutdown with Eaton's Intelligent Power Protector.

## Simplify load balancing

Colour coding and laser engraved chassis easily link breakers to outlet groups.



## How do I simply control and configure my ePDU, and easily see where I have any problems?

**Easy Configuration:** includes central advanced LCD display with menu system. Change settings incl. IP address, configure via USB stick copy / paste configuration file or configure En Masse via IPM software.

**Central Communication and Alerts:** Read Current, Voltage, Power, kWhr and more. Multi colour interface allows easy identification of alerts. Easily monitor the status of your power distribution on the LCD, via the web interface or via your management software.



## How to avoid downtime if a rack PDU becomes faulty or I want to upgrade?

**No Downtime on Upgrades:** ePDU G3 has Hot-Swap network components – update or change without changing the outlet state.

## How do I ensure that my PDUs will fit in all my different racks? How do I ensure that nothing interferes with my IT Equipment and hot-swap components?

**Small with Flexible Mounting:** Easily access hot-swappable IT equipment and components.

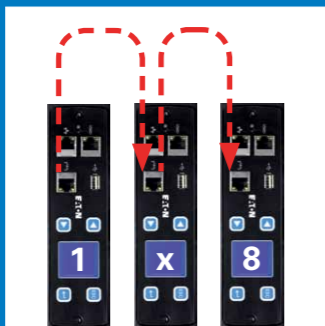
- ePDUs are available in 0U to fit vertically on the back of a rack, or in 1U/2U to be mounted horizontally in any server rack
- Ensure the ePDU, plugs and cables are completely out of the way of equipment with button mount on the rear and sides
- Optionally side mount to face the rear doors of the rack to ensure the ePDU, plugs and cables don't interfere with hot-swap IT equipment
- Choose to raise or lower the ePDU in the rack to suit your installation
- Unique patented variable mounting system can be mounted at any point on the ePDU and gives full flexibility

## Low profile chassis:

- The ePDU doesn't protrude into the rack and is low profile even at the breakers
- 52mm wide x 53mm high and 58.7mm at breakers on most models
- Hydraulic-Magnetic Circuit Breakers include accidental-tip protection by default

1U/2U form factor ePDUs can be mounted horizontally, vertically, or under a surface.





### How can I reduce the cost of networking for monitoring rack PDUs and reduce network traffic?

Daisy-Chain 8 ePDUs from one IP port and one IP address: this reduces the cost of networking, reduces IP addresses and data packets on the network. Daisy Chaining reduces network infrastructure costs by up to 87%.



### How do I ensure that my IT equipment is protected against IEC plugs being accidentally knocked out during maintenance or come lose through vibration?

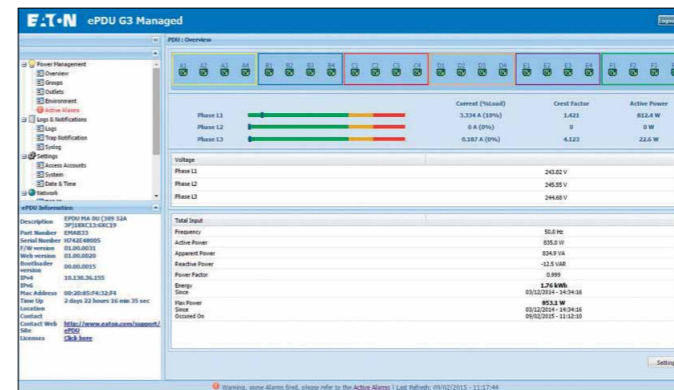
Integrated Grip – IEC Plug Retention: Prevents accidental disconnect from being bumped or from vibration. Works with any IEC plug, no need to buy special cables or brackets.



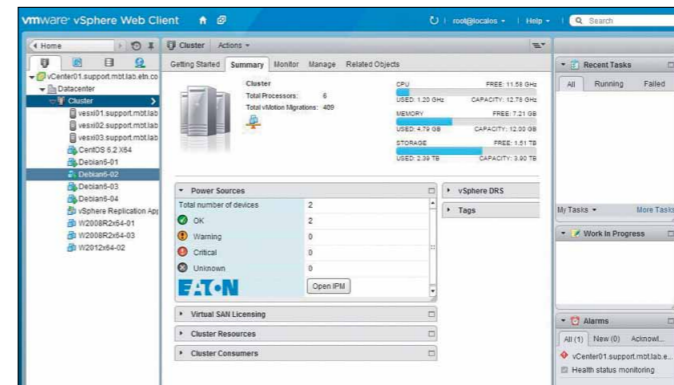
### How do I ensure that costs can be appropriately attributed or billed for department billing and colocation data centers?

IEC +/-1% Billing Grade Accuracy: Meter your energy consumption (kWh) plus V, W and A extremely accurately. Choose your level of Metering: from ePDU to branch circuit to individual pieces of equipment, including metering kWh for IT equipment over A and B feeds.

### How can I ensure business uptime if the power goes down?



Detailed web-based interface on ePDU G3

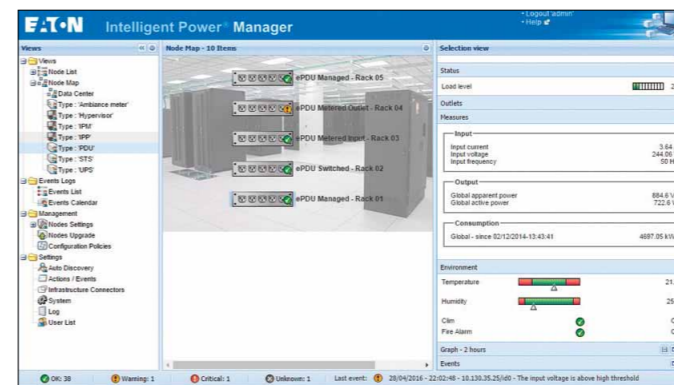


Intelligent Power Manager integration into VMware interface

### Full integration into VMware and Citrix with Intelligent Power Manager

- Trigger VM migration or VMware Site Recovery Manager (SRM)
- User configurable alerts on the ePDU G3 work with Eaton's Intelligent Power Manager (IPM) software to trigger actions
- Trigger automatic migration of virtual servers in the event of a power failure via UPS, ePDU alarm or threshold, temperature/humidity or dry contact event
- User configurable: includes feed going down, branch circuit reaching a defined threshold etc.
- Full integration in VMware interface

### How can I easily monitor many ePDUs and IT equipment?



### Intelligent Power Manager offers supervision and control through a single interface

- One interface to monitor your power usage of many ePDUs
- ePDU and UPS Management
- En masse Configuration of ePDU
- En masse Update of ePDU

Eaton collaborates with the leaders in converged and hyper-converged infrastructures and provide lab-validated power management solutions to ensure high uptime of IT systems and data integrity in case of power and environmental issues.



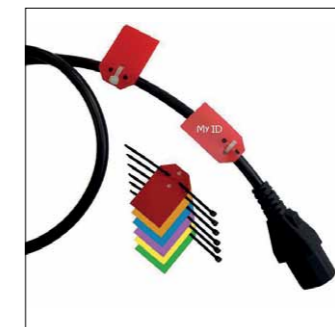
# Key technology features & technical specifications

# ePDU G3 Accessories

	Basic	In-Line Metered	Metered Input	Metered Outlet	Switched	Managed
<b>Good</b>	IEC outlet eGrip plug retention: retains all standard IEC plugs	✓	✓	✓	✓	✓
	Colour-coded outlet and branch circuits for simple load balancing	✓	✓	✓	✓	✓
	Eaton Hydraulic-Magnetic Circuit Breakers with accidental trip protection	✓	✓	✓	✓	✓
	Low-profile form factor: 52mm wide x 53mm deep on most models	✓	✓	✓	✓	✓
	60 Degree C operating temperature	✓	✓	✓	✓	✓
	Installation: Button mounting on rear & side + variable mounting system	✓	✓	✓	✓	✓
<b>Better</b>	Hot-Swap eNMC with Advanced LCD + Optional Temp/Humidity sensor	✓	✓	✓	✓	✓
	±1% IEC Class 1 Billing Grade Accuracy for V, W, A and kWh	✓	✓	✓	✓	✓
	Input and Phase Metering, Circuit Breaker Current Metering	✓	✓	✓	✓	✓
	Daisy-Chain Network 8 ePDUs	✓	✓	✓	✓	✓
	Standard Units with UK, French and Schuko outlets	✓	✓	✓	✓	✓
	En masse configuration and update available via IPM software	✓	✓	✓	✓	✓
	Single Pane Monitoring of many ePDUs+UPS as part of the power chain, via IPM	✓	✓	✓	✓	✓
	Trigger advanced actions including Vmware SRM and VM migration via IPM	✓	✓	✓	✓	✓
	HTTP, HTTPS, SSL, Telnet, FTP, SNMP, SMTP, DNS, DHCP, LDAP, RADIUS	✓	✓	✓	✓	✓
<b>Best</b>	Circuit Breaker Status Monitoring	✓	✓	✓	✓	✓
	Outlet and IT Equipment Metering across A and B feed	✓	✓	✓	✓	✓
	Level 3 PUE measurements	✓	✓	✓	✓	✓
	Turn off unused outlets to control commissioning	✓	✓	✓	✓	✓
	Remote Site Management	✓	✓	✓	✓	✓
	Outlet and IT Equipment Switching/reboot/sequencing across A and B feed	✓	✓	✓	✓	✓

Accessories	Part Number	Benefits
Cable ID tags	IDTAG16A IDTAG32A IDTAG16A3P	Identify and mark cables
Sensor	EMP001	Get live measurement on temperature, humidity, set threshold and be notified in real time
Adaptor Fast Ethernet Gigabit	GBCONV	Quick and easy way to upgrade your 10/100 Mb network interface G3 ePDU to Gigabit speed
ePDU to UPS cables	CBL0UT32 CBL2OUT32	Connect an ePDU 32A input to the hardware output UPS
Intelligent Power Manager	IPM Basic, Silver, Gold	Monitor and managed multiple ePDUs Trigger actions from ePDUs & sensor events

Input Type / Rating (A)	Outlet type: Qty	Breakers	Basic p/n	Dimensions L x W x D, mm	In-Line Metered & Dual p/n	Dimensions L x W x D, mm	Metered Input p/n	Dimensions L x W x D, mm	Metered Outlet p/n	Dimensions L x W x D, mm	Switched p/n	Dimensions L x W x D, mm	Managed p/n	Dimensions L x W x D, mm	
1 Phase	C14 10A		EBAB02	443x52x53			NEW EMIH02	110x19"x203							
			EBAB19	443x52x53											
			EBAB03	704x52x53				EMIB03	1070x52x53	EMO003	1154x52x53	ESWB03	1154x52x53	EMAB03	1154x52x53
	C20 16A	8XFR : 1XC19		EFLX8F*	110x19"x80										
		8XGE : 1XC19		EFLX8D*	110x19"x80										
		6XUK : 1XC19		EFLX6B*	52x19"x120										
		12XC13 : 1XC19		EFLX12I*	110x19"x80										
		16XC13		EBAB21	704x52x53										
		8XC13						NEW EMIH28	110x19"x203						
	1 Phase	IEC60309 16A	7XC13 : 1XC19												
			18XC13 : 2XC19												
			20XC13 : 4XC19		EBAB22	1070x52x53			EMIB09	1070x52x53	EMO022	1604x52x53	ESWB22	1604x52x53	EMAB22
Dual input						NEW EILB13	443x52x53								
						NEW EILB24	443x65x52								
IEC60309 32A		12XC13 : 4XC19	2 single pole					NEW EMIH06	1070x52x53						
		20XC13 : 4XC19	2 single pole	EBAB05	1070x52x53			EMIB06	1070x52x53	EMO005	1604x52x53	ESWB05	1604x52x53	EMAB05	1604x52x53
		20XC13 : 2XC19 : 2XUK	2 single pole					EMIB16	1154x52x53	EMO016	1604x52x53	ESWB16	1604x52x53	EMAB16	1604x52x53
		20XC13 : 2XC19 : 2XFR	2 single pole					EMIB17	1154x52x53	EMO017	1604x52x53	ESWB17	1604x52x53	EMAB17	1604x52x53
		20XC13 : 2XC19 : 2XGE	2 single pole					EMIB18	1154x52x53	EMO018	1604x52x53	ESWB18	1604x52x53	EMAB18	1604x52x53
		36XC13 : 6XC19	2 single pole					EMIB08	1604x52x53						
Dual input	2 x IEC60309				NEW EILB14	443x52x53									
3 Phase	IEC60309 16A 3P	21XC13 : 3XC19							EMO020	1604x52x53	ESWB20	1604x52x53	EMAB20	1604x52x53	
		36XC13 : 6XC19		EBAB00	1604x52x53			EMIB00	1829x52x53						
		6XC19	6 single pole	NEW EBAB11	704x52x53	EILB15	443x52x53	EMIB11	1070x52x53						
	IEC60309 32A 3P	3XC13 : 6XC19	6 single pole	EBAB01	704x52x53										
		6XC13 : 12XC19	6 single pole					EMIB07	1604x52x53						
		18XC13 : 6XC19	6 single pole											EMAB33	1829x52x65
		12XC13 : 12XC19	6 single pole					EMIB12	1604x52x53						
		30XC13 : 12XC19	6 single pole					EMIB34	1829x52x65						
		IEC60309				NEW EILB15	443x52x53								
	Dual input	2 x IEC60309			NEW EILB26	443x65x52									



IDTAG16A, IDTAG32A, IDTAG16A3P



EMP001



GBCONV



CBL0UT32



CBL2OUT32

All ePDU G3 come with a 2 years warranty as standard.

Warranty extension up to 3 years (Warranty+) and 5 years (Warranty 5) available

\* Basic G3 features not applicable for the FlexPDU range  
All standard ePDUs come with 3m cable

Standard Models above are in stock in Europe - for others models please contact your local reseller  
Need Something Special? Dedicated engineering teams in centres of excellence are available to create your perfect ePDU



Eaton ePDU Basic G3 has a compliant environmental declaration

# Need Something Special?

- Dedicated engineering teams in 3 centres of excellence are available to create your perfect ePDU
- Specific configurations or complete engineering projects
- Including national socket types, UK, French, Din/Schuko – including combinations of up to 3 types of outlet on an ePDU
- Colored ePDUs now available for the entire range, to easily identify your power source



[www.eaton.eu/ePDUG3](http://www.eaton.eu/ePDUG3)

Changes to the products, to the information contained in this document, and to prices are reserved; so are errors and omissions. Only order confirmations and technical documentation by Eaton is binding. Photos and pictures also do not warrant a specific layout or functionality. Their use in whatever form is subject to prior approval by Eaton. The same applies to Trademarks (especially Eaton, Moeller, and Cutler-Hammer). The Terms and Conditions of Eaton apply, as referenced on Eaton Internet pages and Eaton order confirmations.

**Eaton**  
EMEA Headquarters  
Route de la Longeraie 7  
1110 Morges, Switzerland  
Eaton.eu

© 2016 Eaton  
All Rights Reserved  
Printed in Europe  
Publication No. BR155016EN  
juin 2016

Eaton is a registered trademark.

All other trademarks are property of their respective owners.

Follow us on social media to get the latest product and support information.

